

MONSON HAMLET PLAN 2017

Funded by Strategic Growth Council



Tulare County Resource Management Agency
Economic Development, Planning Branch, and
Planning Processing Division



MONSON HAMLET PLAN

{This Page Intentionally Left Blank}

MONSON HAMLET PLAN

The work upon which this publication is based was funded in whole or in part through a grant awarded by the Strategic Growth Council, for the Sustainable Communities Grant and Incentives Program, under Proposition 84 (2006) in order to integrate infrastructure analysis within rural disadvantaged community's needs (Senate Bill 244). The intent is to reduce greenhouse gas emissions, promote equity, strengthen the economy, protect the environment and promote healthy and safe communities.

Disclaimer

The statements and conclusions of this report are those of Tulare County and not necessarily those of the Strategic Growth Council or the Department of Conservation, or its employees. The Strategic Growth Council and the Department of Conservation make no warranties, express or implied, and assume no liability for the information contained in the succeeding text.

MONSON HAMLET PLAN

{This Page Intentionally Left Blank}

MONSON HAMLET PLAN

Monson Hamlet Plan

Adopted: December 5, 2017

Tulare County Board of Supervisors
Resolution No. 2017-0976

Tulare County Planning Commission
Recommendations: November 8, 2017
Resolutions No. 9366, 9367, 9368, 9369, and 9370

General Plan Amendment: GPA 17-035
Section 16 Zoning Ordinance (Mixed-Use): PZC 17-039
Section 18.9 Zoning Ordinance (By-Right Uses): PZC 17-038

Monson Hamlet Plan: GPA 17-018
Zoning District Map: PZC 17-018



Tulare County Resource Management Agency
Economic Development and Planning Branch
5961 S Mooney Boulevard
Visalia, CA 93277-9394
(559) 624-7000

MONSON HAMLET PLAN

{This Page Intentionally Left Blank}

MONSON HAMLET PLAN

Tulare County Board of Supervisors

Kuyler Crocker – District 1
Pete Vander Poel – District 2 (Chairman)
Amy Shuklian – District 3
Steve Worthley – District 4 (Vice Chairman)
Mike Ennis – District 5

Tulare County Planning Commission

John F. Elliott – District 1 (Chair)
Nancy Pitigliano – District 2
Bill Whitlatch – District 3
Melvin K. Gong – District 4
Vacant – District 5
Wayne O. Millies – At Large
Ed Dias – At Large
Gil Aguilar – District 2 (Alternate) (Vice Chair)

MONSON HAMLET PLAN

{This Page Intentionally Left Blank}

MONSON HAMLET PLAN

County Administrative Office

Michael C. Spata, CAO

Tulare County Resource Management Agency

Reed Schenke, Director

Michael Washam, Associate Director

Aaron Bock, Chief Planner, Project Processing

Dave Bryant, Chief Planner, Special Projects

Hector Guerra, Chief Planner, Environmental Planning

Susan Simon, Planner III

Velma Quiroz, Planning Tech II

Johnson Vang, Engineer I

Alexandra J. Vander Poel, Grant Specialist I

MONSON HAMLET PLAN

{This Page Intentionally Left Blank}

MONSON HAMLET PLAN

TABLE OF CONTENTS

Introduction	16
Location	16
Planning Area	16
Sustainable Communities Strategy Outreach Report	20
Community Outreach Steps	20
Community Meeting	20
Community Survey	21
Priority Improvements	21
Monson Technical Background Report	24
Demographics	24
Population	24
Projected Population	24
Growth Rate	24
Median Age	25
Ethnicity and Race	25
Economic Conditions	25
Employment in Monson	25
Severely Disadvantaged Community	26
Housing Characteristics	26
Tenure	26
Housing Conditions	27
Age of Structures	27
Household Size (Overcrowding)	28
Vacancy Rate	28
Environmental Conditions	29
Wildlife	29
Geology & Seismic Hazards	31
Soils	31
Physical Conditions	33
Air Quality	33
Flooding	34
Noise	36
Infrastructure	36
Energy: Natural Gas/Electricity	36
Water Quality	37
Sewer	39
Storm Drainage	39
Solid Waste	39

MONSON HAMLET PLAN

Roads	39
Street Lights	40
Sidewalks	42
ADA Curb Ramps.....	42
Transit and Bus Stops.....	42
Bicycle Facilities	43
Amtrak.....	43
Aviation.....	43
Public Services.....	43
Community Resource Center.....	43
Sheriff	43
Fire	44
Schools.....	44
Libraries.....	44
Circulation and Traffic	44
Traffic	45
Existing Circulation and Transportation Conditions	45
Patterns of Blocks and Streets	45
Complete Streets	46
Goals, Objectives and Policies.....	46
Assessment of Land Needs.....	50
Population Growth Forecast	50
Demand Forecast	50
Population and Housing Units	50
Economic Development	50
Infrastructure.....	51
Use Permits	51
Education	51
Land Use and Zoning Acreages.....	52
Land Use and Zoning District Updates.....	52
Implementation Strategy	52
Zoning District Changes	52
Chapter 16 of the Zoning Code.....	52
Mixed Use Overlay District.....	52
Zoning Map Update	53

MONSON HAMLET PLAN

FIGURES

Figure 1 - Vicinity Map	17
Figure 2 - Monson Aerial Map	18
Figure 3 – Existing Monson HDB	19
Figure 4 - CNDDDB Map.....	30
Figure 5 - NCRS Soil Map.....	32
Figure 6 - FEMA Flood Map.....	35
Figure 7 - Monson Water Plan	38
Figure 8 - Monson Inventory of Roadway Facilities.....	41
Figure 9 - Proposed Land Use Plan.....	54
Figure 10 - Existing Zoning Districts.....	55
Figure 11 - Proposed Zoning Districts	56
Figure 12 - Proposed Monson HDB	57

MONSON HAMLET PLAN

TABLES

Table 1 - Monson Land Use	16
Table 2 - Population.....	24
Table 3 - Projected Annual Growth Rate.....	24
Table 4 - Median Age	25
Table 5 - Race & Ethnicity	25
Table 6 - Employment Status.....	26
Table 7 - 2011-2015 American Community Survey Income.....	26
Table 8 - Housing Tenure	26
Table 9 - Housing Tenure (%)	26
Table 10 - 2015 Housing Conditions Survey	27
Table 11 - Year Structure Built	27
Table 12 - Average Household Size.....	28
Table 13 - Vacancy Rate	28
Table 14 - Noise Levels.....	36
Table 15 - Roads in Need of Major and Medium Repair in Monson.....	40
Table 16 - Specifications of Existing Street Lights.....	40
Table 17 - Library Location & Hours	44
Table 18 - Monson Population Projections.....	50
Table 19 - Population Projections	50
Table 20 - Education Attainment	51
Table 21 - Proposed Land Use.....	52
Table 22 - Proposed Zoning District.....	52

ATTACHMENTS

A-1 – Use Permit Requirement Changes (Zone Change Text).....	59
A-2 – Mixed Use Overlay District (Zone Change Text).....	66
A-3 – Development Standards (Mixed Use Zoning Districts).....	69

APPENDICES

Appendix A Planning Commission Resolutions.....	79
Appendix B Board of Supervisors Resolution.....	80

MONSON HAMLET PLAN

{This Page Intentionally Left Blank}

MONSON HAMLET PLAN

INTRODUCTION

The primary objective in preparing a Hamlet Plan for Monson is to develop a plan which can accurately reflect the needs and priorities of this community. Monson is currently designated as a Hamlet in the 2030 Tulare County General Plan (2012). A more precise plan is needed to increase the availability of infrastructure funding (for things such as drinking water system improvements [wells, water distribution piping, and storage tanks], curbs, gutters, and sidewalks, etc.) and to stimulate economic development within the community.

Location

The community of Monson (**see Figure 1**) is located on the east side of the San Joaquin Valley, and is a census-designated place located in the northwest portion of Tulare County. It is bounded by Avenue 384 in the south, Avenue 388 in the north, Sand Creek in the west, and Road 108 roughly three (3) miles southeast of the city of Dinuba in Tulare County (**see Figure 2**). Monson is in Sections 34 & 35 Township 16 South, Range 24 East, MDB&M, and can be found within Monson United States Geological Survey 7.5 minute topographic quadrangle. Monson is located at an elevation of 325 feet National Geodetic Vertical Datum. The coordinates of Monson are: Latitude: 36.4927, Longitude: -119.3357.

Planning Area

The Monson Hamlet Development Boundary (HDB) area consists of 115 acres (**see Figure 3**). The Land Uses within the HDB include agriculture (orchards and pasture), which currently occupy 82.7 percent of the 115 acres. Urban development, including urbanized uses such as commercial development occupy 0.8 of the 115 acres. The remaining 12.4 percent are lands dedicated for Right-of-way (**See Table 1**).

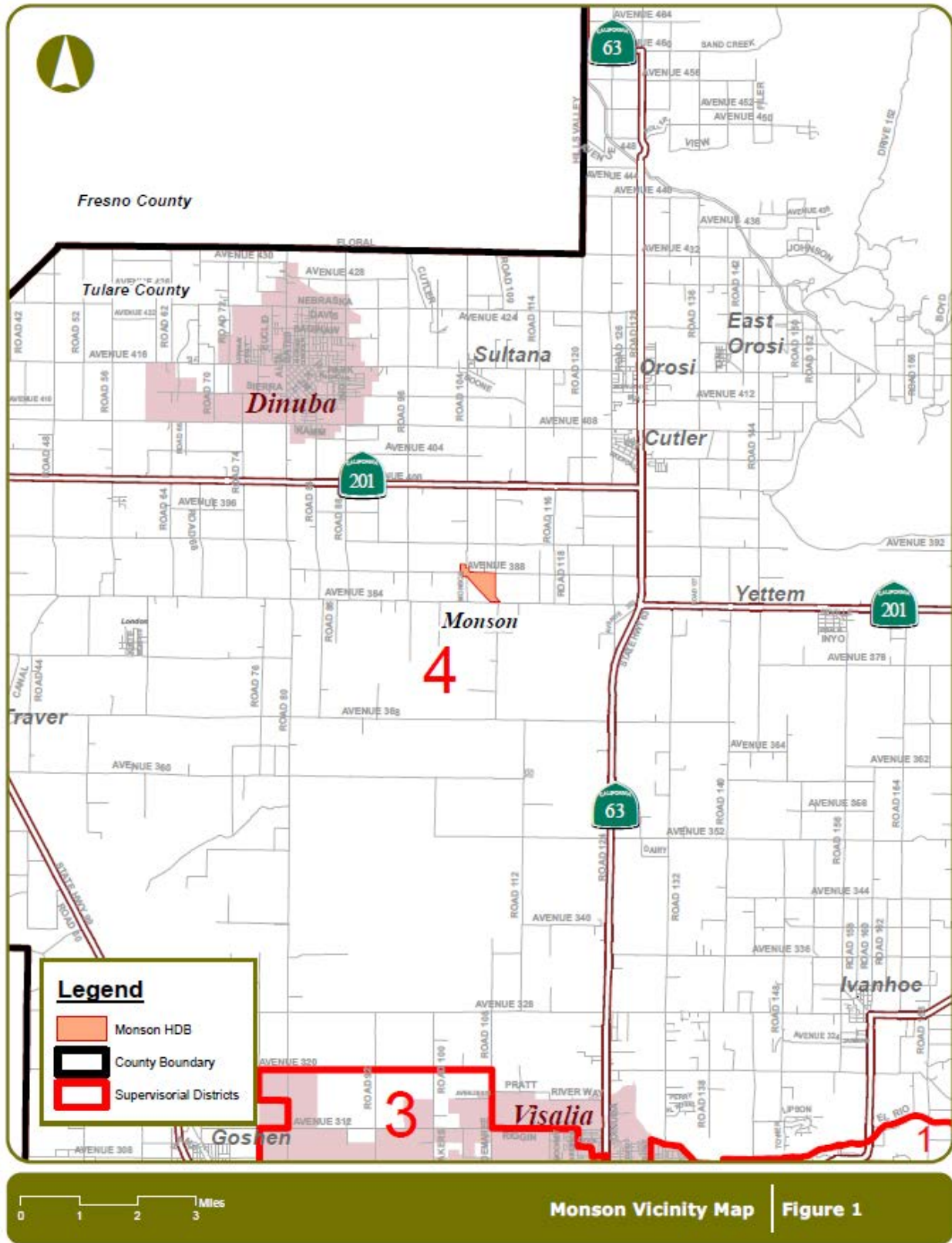
Land Use	Acres
Commercial	1
Agricultural	99
Rights-of-way	14.9 (approx.)
Total	115

Source: Tulare County GIS

There are changes being proposed to the Hamlet Development Boundary to align north of the railroad tracks to the west of Monson Road, approximately 4.8 acres (**see Figure 11**).

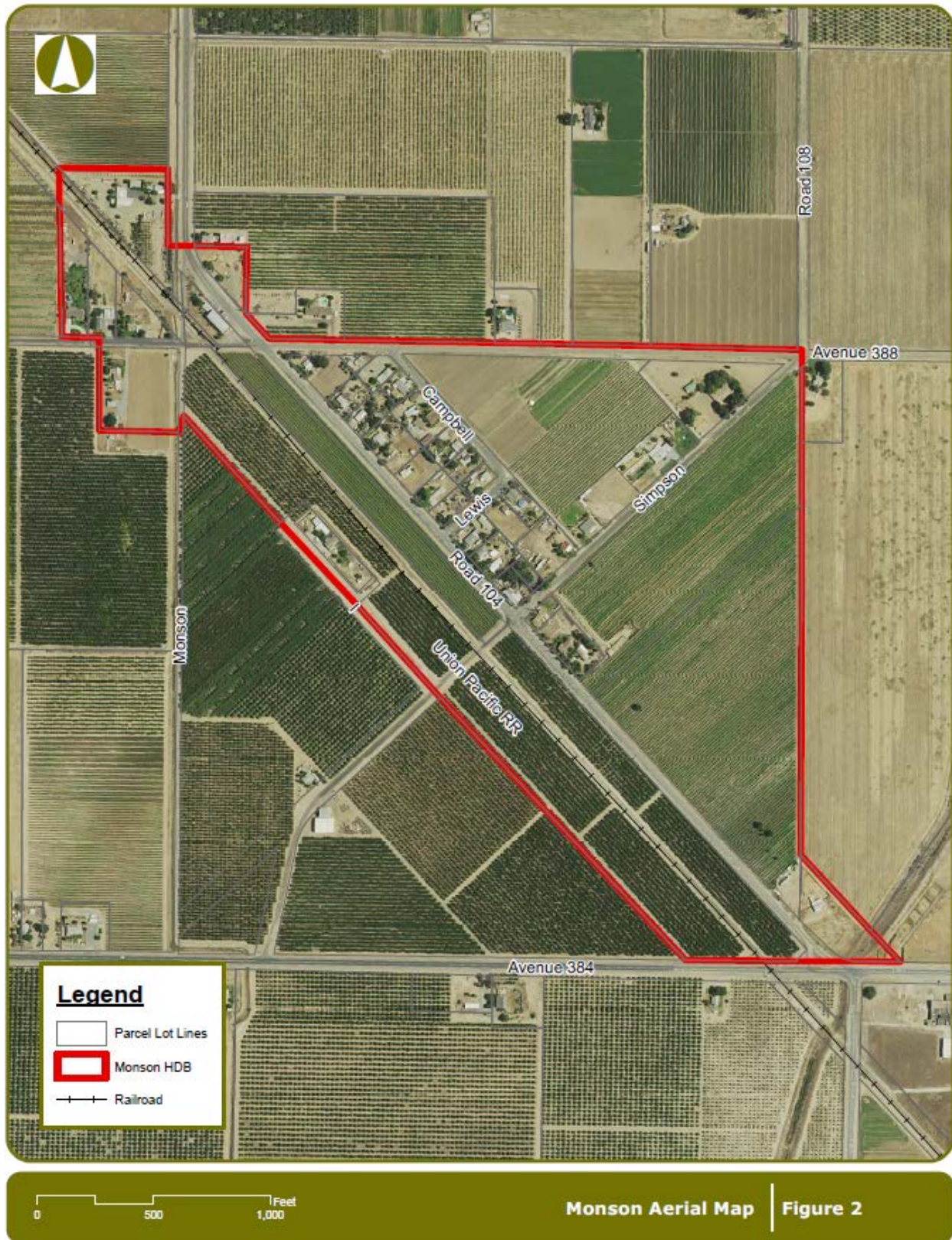
MONSON HAMLET PLAN

Figure 1 - Vicinity Map



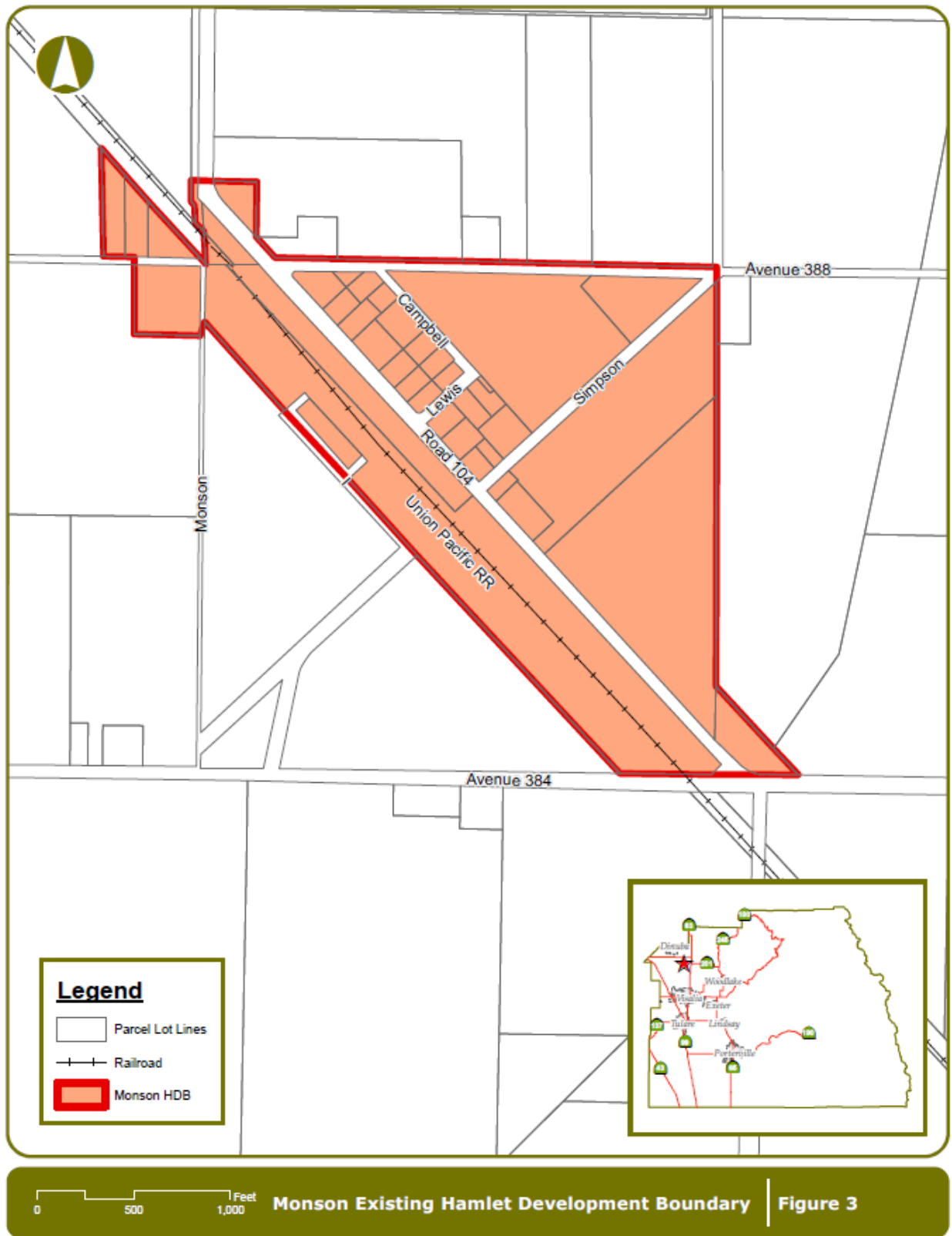
MONSON HAMLET PLAN

Figure 2 - Monson Aerial Map



MONSON HAMLET PLAN

Figure 3 – Existing Monson HDB



MONSON HAMLET PLAN

SUSTAINABLE COMMUNITIES STRATEGY OUTREACH REPORT

The County of Tulare obtained a grant from the Strategic Growth Council (SGC) to assist in the preparation of this Hamlet Plan. In efforts to invite and make local residents aware of the SGC project, Self Help Enterprises (SHE) went door to door throughout the community of Monson to distribute flyers to homes. SHE emphasized with residents about the importance of participating in this process.

Community Outreach Steps

Self-Help Enterprises (SHE) utilized various outreach methods to promote community participation and increase awareness of the SGC project:

- 1.) An informational flyer was developed.
- 2.) On Monday August 17 and Wednesday August 19, 2015, SHE staff went door to door to distribute flyers to homes.
- 3.) SHE staff partnered with La Voz de Monson (a local community group of residents that was formed to encourage community involvement, gather support and to spread the word about the importance of attending this meeting.
- 4.) SHE made phone calls to local residents.
- 5.) Throughout the community outreach process, SHE staff explained the goals of the project and emphasized the importance and the community benefits of participating in the SGC community meeting.
- 6.) To ensure that residents had multiple opportunities to be made aware of the meeting, flyers were posted at the local corner store.

Community Meeting

Self-Help Enterprises conducted a community meeting (with two SHE staff members and one Tulare County RMA employee present) in Monson on Thursday, August 20, 2015 at 6:30 pm. The meeting was scheduled in the evening to make it easier for working residents to attend. The meeting was held at 38660 Monson Drive, the home of a local resident. The purpose of the meeting was to discuss Monson improvement needs, gather community data, and report the findings of the meeting in a final report. More than Twenty Monson residents attended the meeting. Eleven (11) community surveys were collected.

MONSON HAMLET PLAN



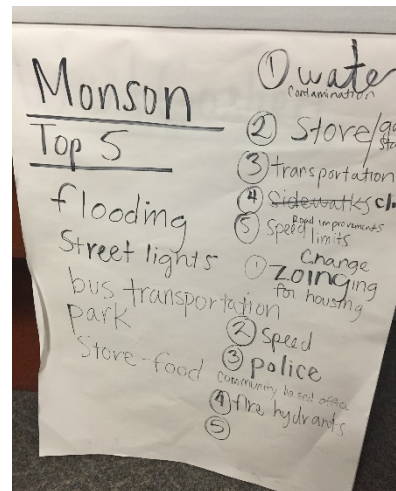
Community Survey

A survey was developed as a tool to gather a variety of community information about multiple topics. The survey asks about the following community related topics: Schools, Libraries, Housing, Zoning, Parks, Shopping Opportunities, Access to Gas Stations, Access to Medical Facilities, Natural Gas, Internet Access, Transportation Options, Walkability, Roads, Street Safety, Flooding, Fire, Safety, Infrastructure, Water Quality & Quantity, Waste Water, Storm Water Drainage, Multimodal Opportunities, and the priority of various improvement needs. Residents were encouraged to add information and comments to the survey.

After careful discussion at the Monson SGC community input meeting, residents concluded that the following is a list of priority improvement needs.

Priority Improvements

1. Water Issues
2. Storm Water Drainage/ Street Flooding
3. Road Improvements
4. Street lights
5. Bus transportation
6. Fire hydrants
7. Community based Officer/Sherriff patrol
8. Community Park
9. Health Care Clinic
10. Zoning changes



MONSON HAMLET PLAN

Sewer System

There is no community wide sewer system in Monson. The community depends on individual on-site septic tank systems for wastewater disposal. In wet years, the combination of a perched water table and tight soils creates problems for effective leaching of septic tank effluent.

Storm Water Drainage/Flooding

Monson residents report that the community does not have adequate storm water drainage. Large puddles form when it rains and the water does not drain because there is nowhere for the water to go. This is a problem because the stagnant water attracts insects and mosquitos. Residents report that some streets flood during the rainy season, most of the roads in town are dirt roads this makes mud and pot holes. Not having curb and gutters or sidewalks also adds to the problem

Road Improvements

Road conditions are a big concern to Monson residents. It is reported that road conditions are poor and most roads need work, most streets have potholes, cracks and bumps. Drivers feel unsafe and are constantly worried about damage caused to their vehicles while driving on Monson roads. Residents report that roads are narrow and that two cars barely fit on one road at the same time. According to residents, Monson roads are not regularly maintained.

Street Lights

Residents report dark streets at night due to little or no street lighting. Most people stay indoors at night because they do not feel safe walking on a dark street. At night, one cannot see down the street; this is a major safety concern for them, especially since the sheriff's department seldom patrols Monson. Residents are especially concerned about how this affects the safety of local children. Residents said that some streets have light poles but the light bulb is out and other streets have no poles at all. Residents report being told that there is a cost to them to install a light pole on their street.

Speed Limit Signs

During the SGC community meeting residents expressed concern about the speed of traffic in town. Many vehicles travel at a high rate of speed on Monson Drive as well as on the other main roads in town. Residents believe that in order to avoid more car crashes, the County should install a speed limit sign on Monson Drive and speed bumps on residential streets to slow traffic. Residents shared that there is little to zero patrol done by the Sheriff and California Highway Patrol, this adds to the speeding problem.

Public Transportation

Residents expressed their frustration from the lack of public transportation access. The Monson residents that do not drive or own a vehicle, find it hard to travel outside of Monson. Often residents need transportation to go into Visalia or Dinuba for doctors' appointments and shopping needs. Many residents expressed the need for a bus route that goes out through Monson. Bus transportation to and from Monson would help many residents to travel on a daily basis.

Zoning

During the community meeting residents stated that they are unable to build new homes or start businesses due to the way land is currently zoned in Monson. Residents expressed that zoning changes are needed to allow residents to build new housing in the community. During this meeting, it appeared that multiple residents would be interested in building a home in Monson if zoning laws permitted it.

MONSON HAMLET PLAN

Community Based Officer

The Tulare County Sheriff Department is responsible for patrolling the community of Monson. Residents report that the TCSD response time is unacceptable and that there is little to zero Sheriff Patrol within the community. Residents are worried about the rate of unreported crimes and crimes that go un-responded to. Monson residents are asking for increased Sheriff Presence in their community.

Fire Hydrants

Residents are worried because their community does not have fire hydrants. Residents feel vulnerable to fire emergencies. The nearest fire water supply is in Sultana. In case of a fire, Dinuba Fire Department would service the Monson community.

Neighborhood Park

In the community of Monson there is no safe open green space for children to play and adults to be physically active. The nearest park is located 8 miles away in the city of Dinuba, survey results show that in Monson, children play in the street or do not play outside at all. Monson residents are concerned about the health and safety of their children, they are concerned that the safety of their kids is at risk when they play on the street and for the health of their children from lack of physical activity that comes from not having a safe place to be physically active.

Local Market

The community of Monson is a food desert. This community does not have a local food market that sells fresh produce, meat and dairy. The Monson Market sells some food however, most of it is highly processed, packaged, and not considered nutritious. In addition, the food prices are much higher there than in neighboring communities and the quality of food is not as fresh as it is in other communities. Monson residents regularly travel to Dinuba (8 miles) or Visalia (15 miles) to buy their groceries.

Medical Clinic

Monson residents do not have access to medical care within the community. The nearest medical clinic is approximately 8 miles away in Dinuba. Most residents report traveling to Visalia, 14 miles, Dinuba, 8 miles or Orosi, 8 miles for medical care. This is concerning to residents especially during medical emergencies. Families without vehicles and one car families are especially affected by this. Families that do not have a car are forced to find transportation to access medical care in a nearby community by paying for a ride or using public transportation to travel there. The Tulare County Area Transit does not make regularly scheduled stops in Monson, the TCAT will pick up Monson residents by appointment when calling the day before. Residents report that they are very concerned about the thought of having to travel so far in the case of a medical emergency. The nearest hospital is in Visalia, 15 miles away, and it takes approximately 20 minutes for the nearest ambulance to get to Monson from Visalia.

Internet Access

Most families in Munson do not have internet access at their homes. Any available internet service is unreliable and cost prohibitive. Residents are told by internet providers that there is not a tower in their area and that is why internet service is either unreliable or expensive compared to what it costs in nearby cities. Without access to the internet, Munson residents are unable to do things such as online job hunting, apply for resources, or provide homework help to their kids.

MONSON HAMLET PLAN

MONSON TECHNICAL BACKGROUND REPORT

DEMOGRAPHICS

An important part of planning is having information that describes the characteristics of a hamlet’s population. Collectively, these characteristics are known as “demographics” which is data typically consisting of the age, gender (i.e., male or female), income, race, employment, and other characteristics of a community. This data, and looking at historical trends of this data, allows a reasonable way to project what may occur in the future and thereby provides a guide to which issues need to be addressed in a hamlet plan. For example, knowing the age and percentage of a population allows proper planning for school needs for school-age children; knowing how many people may eventually live in a hamlet allows for proper planning to meet housing needs and the amount of land needed to provide housing for a growing population. If a population can be estimated, it is possible to project how much water and/or sewer service may be needed for a hamlet. The following information provides a summary of some of the more important demographic data needed to craft a plan that can realistically address the needs of smaller hamlet such as Monson.

Population

In 2015, the Population of Monson was 237 (see Table 2)

Table 2 - Population

	California	%	Tulare County	%	Monson	%
Male	19,087,135	49.7%	227,426	50.1%	128	54%
Female	19,334,329	50.3%	226,607	49.9%	109	46%
Total	38,421,464		454,033		237	

2011-2015 American Community Survey 5-Year Estimates

Projected Population

“The San Joaquin Valley faces major challenges. One concerns how to handle future growth. Population in the Valley is expected to nearly triple by 2050, from 3.6 million to 9.4 million people, the equivalent of adding 11 new towns the size of Fresno to the area. Tulare County is expected to grow to over 1,000,000 residents by 2050, well over doubling its current population.”¹

Growth Rate

As noted in the 2010 General Plan Background Report, the unincorporated areas of Tulare County have a 1.3% projected annual growth rate from 2007 to 2030. This 1.3% annual growth rate has been used to project Monson’s population during the Planning Period (see Table 3).

Table 3 - Projected Annual Growth Rate		
	Historic Growth Rates 1990-2007	Projected Growth Rates 2007-2030
County Total	1.9%	2.4%
Incorporated	2.8%	2.9%
Unincorporated	0.46%	1.3%

Source: DOF, 2007; TCAG, 2008, 2010 General Plan Background Report

¹ Tulare County Regional Blueprint, page 7

MONSON HAMLET PLAN

Median Age

Monson’s population’s median age is younger than the median age of both Tulare County, as well as the State of California (see Table 4).

Geography	Median Age (years)
California	35.8
Tulare County	30.3
Monson	26.4

2011-2015 American Community Survey 5-Year Estimates

Ethnicity and Race

In 2015, approximately 18.1% of Monson’s population was White, 4.6% was African American, 0% was Native American, 0% was Asian, and 26.6% was two races or more (see Table 5). Approximately 86.9% was Hispanic (of any race). This statistic is important because persons of Hispanic origin may speak a language other than English (in this case, likely to be Spanish) and the needs of the Spanish-speaking community should be considered in order to reach out to persons on issues which may affect their community.

	California	%	Tulare County	%	Monson	%
Total	38,421,464		454,033		237	
Hispanic or Latino (of any race)	14,750,686	38.4%	283,533	62.4%	120	50.6%
White (Not Hispanic)	14,879,258	38.7%	139,581	30.7%	43	18.1%
Black or African American (Not Hispanic)	2,160,795	5.7%	6,448	1.3%	11	4.6%
American Indian and Alaska Native (Not Hispanic)	142,191	0.4%	3,069	0.7%	0	0%
Asian (Not Hispanic)	5,192,548	13.5%	14,546	3.2%	0	0%
Some other race (Not Hispanic)	84,477	0.2%	288	0.1%	0	0%
Two or more races (Not Hispanic)	1,072,500	2.8%	6,304	1.4%	63	26.6%

2011-2015 American Community Survey 5-Year Estimates

ECONOMIC CONDITIONS

Employment in Monson

According to the Tulare County 2030 General Plan Update, the County’s economy has historically been driven by agriculture and has had one of the largest agricultural outputs of any county in the US. Despite this, the Tulare County unemployment rate has remained consistently higher than the State average, which can be largely attributed to the seasonal nature of agricultural production. (see Table 6)

According to the California Department of Finance, the 2011-2015 American Community Survey indicated that the unemployment rate for Monson was about 12.1% while the rate for Tulare County was 13.5%. The unemployment rate for the State of California was 10.1%. Keeping in mind that the 12.1% includes only the employable labor force (that is, not every person of the population) results in about 21 unemployed persons of Monson’s person labor force of 131.

MONSON HAMLET PLAN

Employment Status	California	Tulare County	Monson
Population 16 years & over	30,312,429	325,404	173
In labor force	19,269,449	194,420	131
Civilian labor force	19,137,441	194,102	131
Employed	17,246,360	170,780	110
Unemployed	1,891,081	23,322	21
Armed Forces	132,008	318	0
Not in labor force	11,042,980	130,984	42

2011-2015 American Community Survey 5-Year Estimates

Median Household Income

Monson median household income was is currently unavailable, however the State of California's median household income is currently \$61,818 (see Table 7)

Geography	Median household income (dollars)	Median family income (dollars)	Per capita income (dollars)
California	\$61,818	\$70,720	\$29,527
Tulare County	\$42,031	\$44,814	\$17,894
Monson CDP	Not available	Not available	\$18,344

Severely Disadvantaged Community

Public Resources Code 75005. (g) states that a "[d]isadvantaged community" means a community with a median household income less than 80% of the statewide average. "Severely disadvantaged community" means a community with a median household income less than 60% of the statewide average."

HOUSING CHARACTERISTICS

Tenure

As the community grows, it will be important to provide new housing and commercial opportunities, allow expansion of the size of existing housing (for example, increase a unit by an additional bedroom), and allow various housing types (such as mobile homes).

	California	Tulare County	Monson
Occupied housing units	12,717,801	133,570	62
Owner-occupied	6,909,176	75,685	49
Renter-occupied	5,808,625	57,885	13

2011-2015 American Community Survey 5-Year Estimates

	California	Tulare County	Monson
Owner-occupied	54.8%	57.2%	62%
Renter-occupied	45.2%	42.8%	79.0%

2011-2015 American Community Survey 5-Year Estimates

MONSON HAMLET PLAN

Housing Conditions

The condition of housing is typically categorized as sound, deteriorated, or dilapidated. A “sound” housing unit (house) is one that is in good-to-excellent condition requiring no structural or other improvements. Deteriorated housing means a housing unit may need some level of maintenance/repair to improve the condition of the housing. Deterioration is classified as minor, moderate, or substantial. Dilapidated means a unit is not considered suitable for living. There may be structural, electrical, plumbing or other conditions that could endanger the well-being and safety of persons living in dilapidated housing. Housing condition is an indicator of a person’s ability to afford maintenance/repair of the house they live in. Without income to pay for maintenance/repair, it is likely that a house, as it ages, will continue to deteriorate over time.

According to the 2015 Tulare County Housing Element, a sampling of housing conditions in Monson indicated that approximately 14% of the housing units were sound. Approximately 64% of Monson's housing units were deteriorated and 23% were dilapidated (see Table 10).

Survey Area	Sound		Deteriorated						Dilapidated		Total Units
			Minor		Moderate		Substantial				
	Units	%	Units	%	Units	%	Units	%	Units	%	
Monson	3	14	3	14	7	32	4	18	5	23	22

Source: Tulare County 2015 Housing Element

Age of Structures

Most of the homes in Tulare County were built between 2000 and 2013. (see Table 11) The total number of housing units in Monson is 62.

Year Structure Built	California	Tulare County	Monson
Total housing units	13,845,790	144,792	62
Built 2014 or later	10,183	196	0
Built 2010 to 2013	129,453	2,114	19
Built 2000 to 2009	1,646,490	25,997	24
Built 1990 to 1999	1,495,571	21,767	0
Built 1980 to 1989	2,117,819	22,733	0
Built 1970 to 1979	2,503,688	27,111	3
Built 1960 to 1969	1,871,029	15,500	4
Built 1950 to 1959	1,907,512	13,694	0
Built 1940 to 1949	865,607	7,494	0
Built 1939 or earlier	1,298,438	8,186	12

2011-2015 American Community Survey 5-Year Estimates

MONSON HAMLET PLAN

Household Size (Overcrowding)

In 2015 the average renter occupied household size in Monson was 5.23 persons per household (see Table 12). The average owner occupied household size is 3.45.

Geography	Average Household size (Owner Occupied)	Average Household size (Renter Occupied)
California	3.00	2.91
Tulare County	3.24	3.50
Monson	3.45	5.23-

2011-2015 American Community Survey 5-Year Estimates

By definition, the most common measure of overcrowding is persons per room in a dwelling unit.² More than one person for

each room of a dwelling unit is considered overcrowding. It is important to note that the measure is based on all rooms of a dwelling unit, not just the number of bedrooms. It is not uncommon for persons to share a bedroom, for example siblings or adults.

Vacancy Rate

Vacancy rate is important as it provides an indicator of unoccupied housing units. Vacancies may occur as people move away from a housing unit and it remains vacant until the next person/family moves in. Vacancy allows persons to decide whether to choose owning or renting housing based on their need and income. A vacancy rate of about 5-6% is considered typical; however, vacancy rates above 6% can be a reflection of affordability or housing condition. In 2015, the rental vacancy rate in Monson was 0.0%, which was lower than both Tulare County at 4.2% and the State of California at 4.6%. The homeowner vacancy rate was 0.0%, which was lower than Tulare County at 1.7% and the State of California at 1.4%, (see Table 13).

Geography	Homeowner vacancy rate	Rental vacancy rate
California	1.4%	4.1%
Tulare County	1.7%	3.7%
Monson	0.0%	0.0%

2011-2015 American Community Survey 5-Year Estimates

² U.S. Department of Housing and Urban Development, "Measuring Overcrowding in Housing" 2007. Page 2 See: http://www.huduser.org/publications/pdf/Measuring_Overcrowding_in_Hsg.pdf

MONSON HAMLET PLAN

ENVIRONMENTAL CONDITIONS

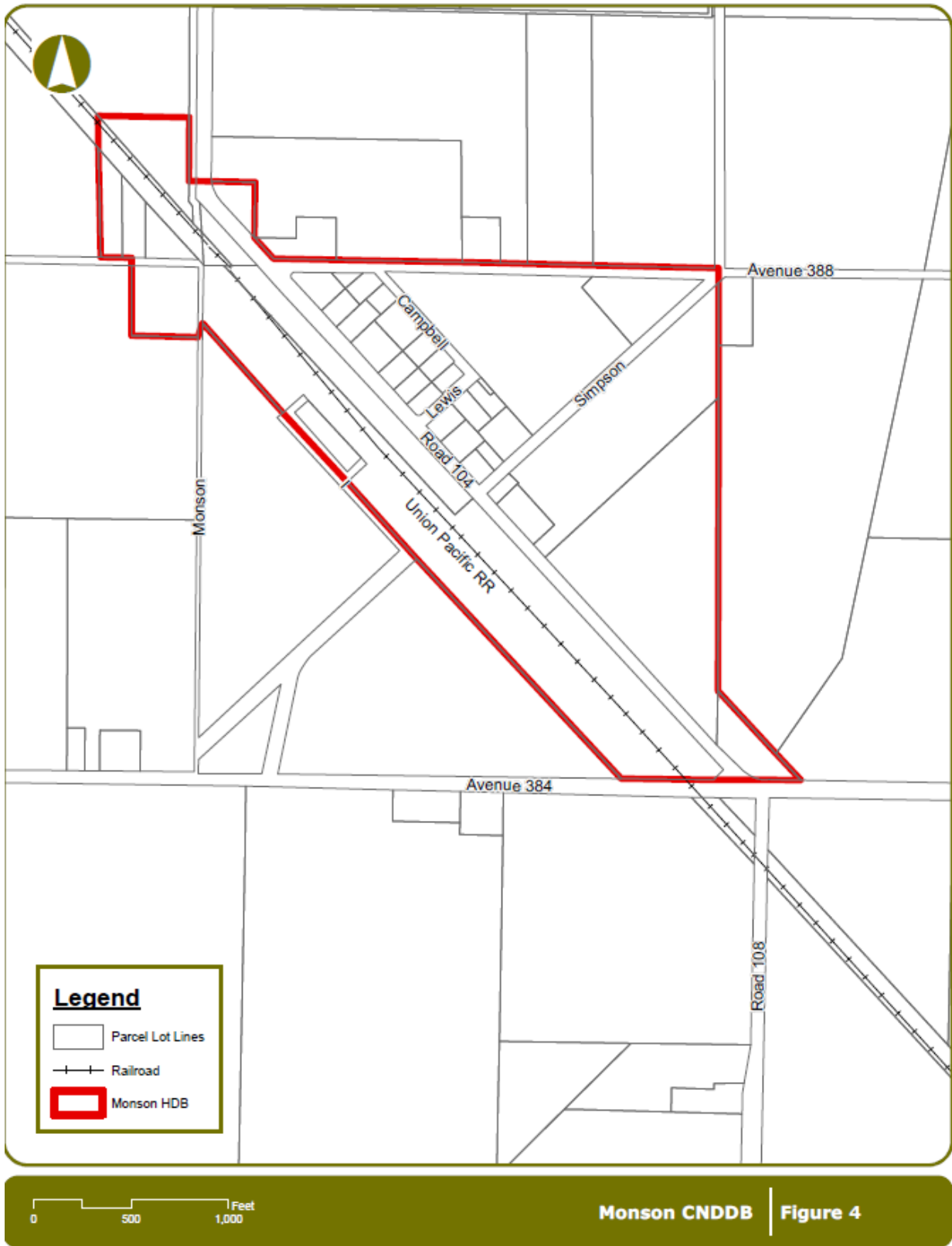
Wildlife³

A California Natural Diversity Database (CNDDDB) search conducted on November 1, 2016 (see **Figure 4**), indicates there are special status species within the Monson Quadrant Species List (which includes the Monson Planning Study Area) consisting of three (4) animal species and two (2) plant species: San Joaquin kit fox (*Vulpes macrotis mulica*, federal endangered); California tiger salamander (*Ambystoma californiense*, federal and state threatened); Vernal pool fairy shrimp (*Branchinecta lynchi*, federal threatened); Vernal pool tadpole shrimp (*Lepidurus packardi*, federal endangered), Hoover's spurge (*Euphorbia hooveri*, federal endangered); and San Joaquin Valley Orcutt grass (*orcuttia inaequalis*, federal threatened and state endangered). The California Department of Fish and Wildlife (CDFW) Occurrence Reports indicate a last sighting of kit fox in 1975.

³ California Department of Fish and Wildlife. Biogeographic Information & Observation System (BIOS). <http://www.dfg.ca.gov/biogeodata/bios/>; California Department of Fish and Wildlife. California Natural Diversity Database. CNDDDB Maps & Data. <https://www.wildlife.ca.gov/Data/CNDDDB/Maps-and-Data> accessed November 1, 2016.

MONSON HAMLET PLAN

Figure 4 - CNDDB Map



MONSON HAMLET PLAN

Geology & Seismic Hazards⁴

“The Official Maps of Earthquake Fault Zones delineated by the California Geological Survey (CGS), State of California Department of Conservation, through December 2010, under the Alquist-Priolo Earthquake Fault Zoning Act, indicate that there are no substantial faults known to occur in Tulare County. The nearest known faults likely to affect Monson are the San Andreas Fault (approximately 75 miles to the west), the Owens Valley Fault (approximately 65 miles to the northeast), and the Pond Fault (approximately 25 miles southwest). According to the Five County Seismic Safety Element (FCSSE) and Figure 10-5 (Seismic/Geologic Hazards and Microzone) of the Tulare County 2030 General Plan Health and Safety Element (GPHSE), the Project area, Monson is located in the V-1 zone, characterized as a moderately thick section of marine and continental sedimentary deposits overlying the granitic basement complex. The FCSSE further states that, “Amplification of shaking that would affect low to medium-rise structures is relatively high, but the distance to either of the faults that are expected sources of the shaking [the San Andreas and Owens Valley Faults] is sufficiently great that the effects should be minimal. The requirements of Zone II of the Uniform Building Code should be adequate for normal facilities.”

Soils⁵

According to the United States Department of Agriculture (USDA), Natural Resources Conservation Service (NRCS), and the Soil Survey of Tulare County, the following soil types are located in Monson (see Figure 5). Generally, these soils are moderately to very deep, are well drained, and run in a northwest to southeast direction throughout the Hamlet Development Boundary (HDB). The following descriptions are provided for the above soil types:

Calgro- Calgro, saline-Sodic, complex, 0 to 2 percent slopes, Erosion potential is low to moderate and shrink swell potential low.

Crosscreek-kai association, 0 to 2 percent slopes, is formed by the chemical and mechanical alteration of the Kai soil that originally formed in alluvium derived from granitic rock sources. The soil is well drained, and the permeability is moderately slow above the duripan due to sodicity and very slow in the duripan. The available water capacity is moderate to high and the shrink-swell potential is moderate.

The parent material of Kai Soil is alluvium derived mainly from granitic rock sources.

The soil is moderately well drained and the permeability is moderately slow above the duripan and very slow in the duripan. The available water capacity is low to moderate and the shrink-swell potential is moderate.

Building site development management factors include very slow permeability of the duripan, moderate to moderately rapid permeability below the duripan, high corrosivity to steel in both soils and high corrosivity to concrete in the Crosscreek soil. The land capability classification: Crosscreek-unit, 2s-6, irrigated; subclass, 6s, non-irrigated; Kai- unit, 3s-6 irrigated; subclass, 7s, non- irrigated, MLRA17. This is not considered to be prime farmland.

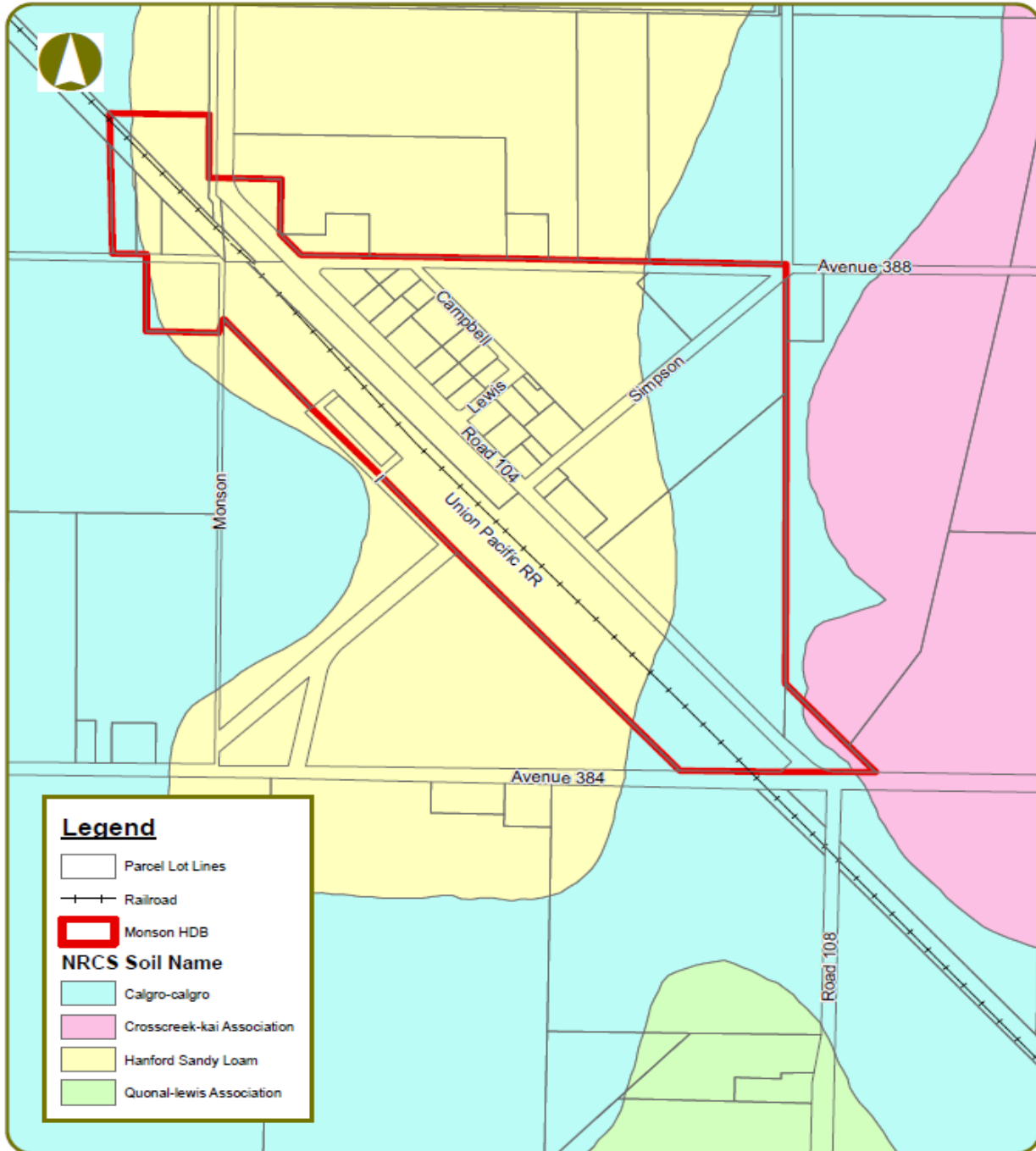
⁴ California Department of Conservation, California Geological Survey: Earthquake Shaking Potential for California, 2008. http://www.conservation.ca.gov/cgs/information/publications/ms/Documents/MS48_revised.pdf; California Department of Conservation, Official Maps of Earthquake Fault Zones delineated by the California Geological Survey through December 2010 under the Alquist-Priolo Earthquake Fault Zoning Act. http://www.quake.ca.gov/gmaps/ap/ap_maps.htm

⁵ United States Department of Agriculture, Natural Resources Conservation Service, Soils Map for Central Tulare County, 2009 – accessed August 17, 2016.

MONSON HAMLET PLAN

Hanford sandy loam, 0 to 2 percent slopes, consists of very deep, well drained soils that formed in moderately coarse textured alluvium dominantly from granite. Hanford soils are on stream bottoms, floodplains, and alluvial fans. Hanford soils are used for growing a wide range of fruits, vegetables, general farm crops, dairies and for urban development.

Figure 5 - NCRS Soil Map



MONSON HAMLET PLAN

PHYSICAL CONDITIONS

Air Quality

The Monson Plan Area is within the San Joaquin Valley Air Basin (SJVAB) and under the jurisdiction of the San Joaquin Valley Air Pollution Control District (SJVAPCD). The SJVAB is classified non-attainment/severe for the State O₃ 1-hour standard, non-attainment for the State O₃ 8-hour standard, non-attainment for the State PM₁₀ standard, non-attainment for the federal and State PM_{2.5} standards, and attainment and/or unclassified for the remaining federal and State air quality standards. According to the Tulare County General Plan, the San Joaquin Valley has some of the worst air quality in the nation. The CO and NOX emissions are typically generated by motor vehicles (mobile sources). The ROG emissions are generated by mobile sources and agriculture. Although emissions have been shown to be decreasing in recent years, the SJVAB continues to exceed state and federal air quality emission standards.

Executive Order S-3-05, issued by Governor Schwarzenegger in 2005, established targets for greenhouse gas (GHG) emissions for the State. The Global Warming Solutions Act of 2006 (or Assembly Bill (AB) 32) directed the California Air Resources Board (CARB) to develop and adopt statewide GHG emission limits in order to reduce emission levels to those experienced in 1990, by the year 2020. In order to achieve those targets, CARB adopted the Climate Change Scoping Plan in December 2008.

Sustainable Communities and Climate Protection Act of 2008, also known as Senate Bill (SB) 375, builds upon AB 32 by requiring CARB to develop regional GHG emissions reduction targets for passenger vehicles. Then each Metropolitan Planning Organization (MPO) must prepare a Sustainable Communities Strategy (SCS) to demonstrate how the region will meet its targets. The SCS will be incorporated into the Regional Transportation Plan (RTP).

The SJVAPCD provides a list of potential air quality mitigation measures that are applicable to General Plan updates and community plans:

- Adopt air quality element/general plan air quality policies/specific plan policies.
- Adopt Local Air Quality Mitigation Fee Program.
- Fund TCM program: transit, bicycle, pedestrian, traffic flow improvements, transportation system management, rideshare, telecommuting, video-conferencing, etc.
- Adopt air quality enhancing design guidelines/standards.
- Designate pedestrian/transit oriented development areas on general plan/specific plan/planned development land use maps.
- Adopt ordinance limiting wood burning appliances/fireplace installations.
- Fugitive dust regulation enforcement coordinated with SJVUAPCD.
- Energy efficiency incentive programs.
- Local alternative fuels programs.
- Coordinate location of land uses to separate odor generators and sensitive receptors.

There is a correlation between air quality and land use. It is also related to the configuration of land, vegetation, climate, wind direction and velocity, and production of man-made impurities which change the natural qualities of the air. Because Monson is located near the northwest end of the Valley with prevailing winds from the northwest, it is susceptible to accumulate adversely modified air, particularly

MONSON HAMLET PLAN

when a temperature inversion occurs which holds down surface air along with its pollutants. Local air pollution sources within the general vicinity of Monson including agricultural activities.

Flooding⁶

According to the Federal Emergency Management Agency (FEMA) Flood Insurance Rate Map, Community-Panel Number 06107C0630E (see **Figure 6**), Monson is located within Flood Zone X, – Areas of 0.2% annual chance flood; area of 1% annual chance flood with average depths of less than 1 foot or with drainage areas less than 1 square mile; and areas protected by levees from 1% annual chance flood. Monson is also located within the FEMA 500 year flood zone. Structures located in a shaded X zone are recommended to be elevated one foot above natural ground. Elevation certificates not required unless the property owner wishes to use them for insurance rating purposes; for example, a preferred risk policy.

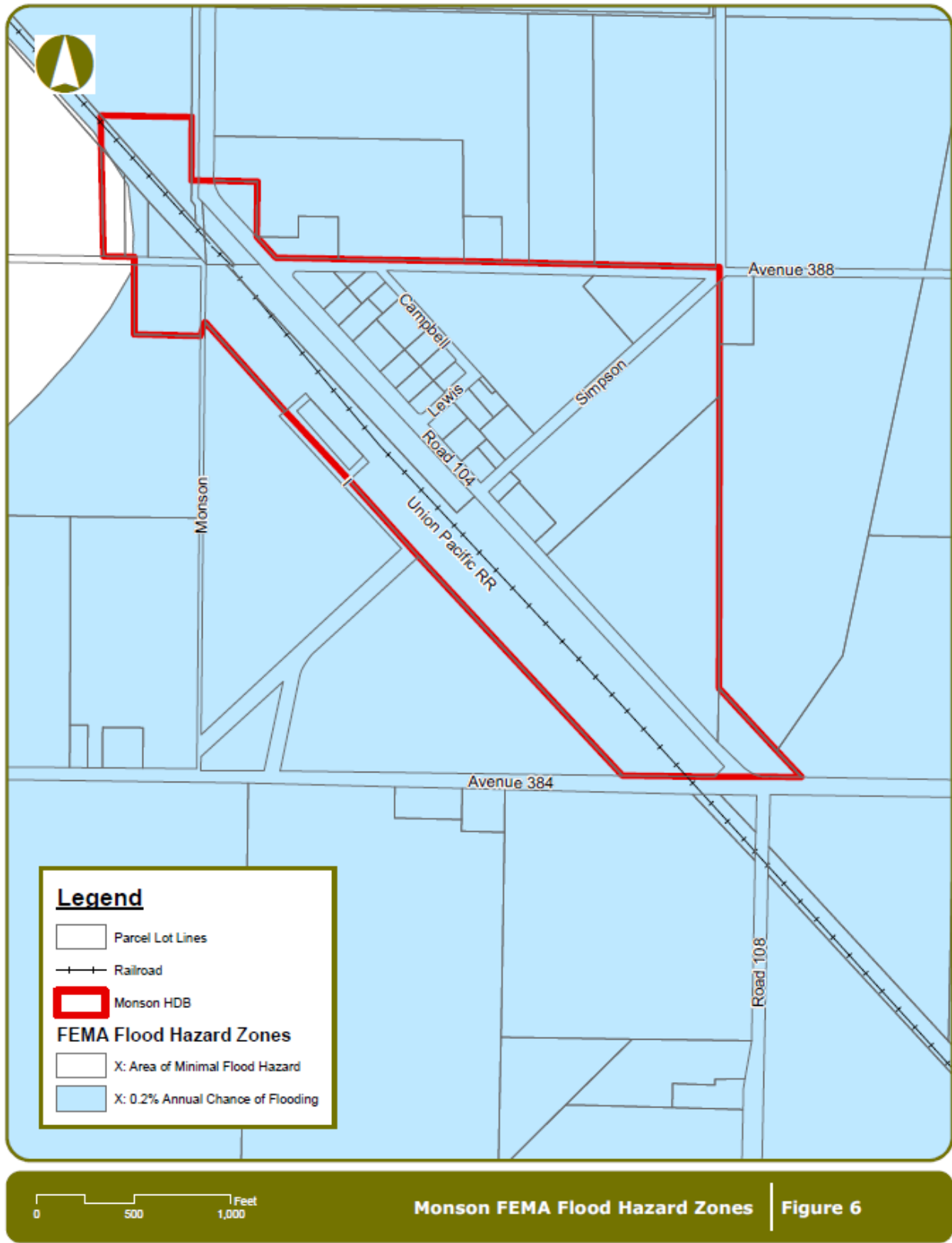
“Official floodplain maps are maintained by the Federal Emergency Management Agency (FEMA). “Floodplain” or “flood-prone area” means any land area susceptible to being inundated by water from any source. “Base Flood” is the flood having a one percent chance of being equaled or exceeded in any given year. “One-hundred-year flood” or “100 year flood” has the same meaning as “Base Flood.” “Special Flood Hazard Area” is the land in the floodplain subject to a one percent or greater chance of flooding in any given year. “Floodway” means the channel of a river or other watercourse and the adjacent land area that must be reserved in order to discharge the base flood without cumulatively increasing the water surface elevation more than one (1) foot. The floodway is delineated on the Flood Boundary Floodway Map, on maps adopted by the State Reclamation Board when acting within its jurisdiction, and on the County Zoning Map (signified by the F-1 Primary Flood Plain Zone). The F-2 Secondary Flood Plain Combining Zone which is intended for application to those areas of the County which lie within the fringe area or setback of the flood plain and are subject to less severe inundation during flooding conditions than occur in the F-1 Zone.

The County of Tulare has taken steps to be a part of the National Flood Insurance Program (NFIP), by agreeing to manage flood hazard areas by actively adopting minimum regulatory standards as set forth by Federal Emergency Management Agency (FEMA). The National Flood Insurance Program (NFIP) is administered by the (FEMA) to offer flood insurance to properties located in special flood hazard areas (SFHAs). Information about the NFIP, is available at the following website: www.fema.gov. As part of the county’s participation in the NFIP, individuals are eligible to obtain flood insurance. Further flood information is available at the County of Tulare Resource Management Agency at the following website: <http://tularecounty.ca.gov/rma/index.cfm/public-works/flood-hazard-information/flood-control-information/>. On June 16, 2009, Tulare County adopted the new Digital Flood Insurance Rate Maps (DFIRMs). Information is available to determine if a property is located in a SFHA by using the following FEMA Map Service Center link as follows: <https://msc.fema.gov/portal>.

⁶ Federal Emergency Management Agency, 2009. National Flood Insurance Rate Map, Map Number 06107C0630E, Panel Number 630 of 2550, June 16, 2009. <https://msc.fema.gov/portal/> accessed August 17, 2016.

MONSON HAMLET PLAN

Figure 6 - FEMA Flood Map



MONSON HAMLET PLAN

Noise⁷

Tulare County adopted a noise element as part of the Health and Safety Chapter of the 2030 General Plan Update. The noise contours were prepared in terms of day-night average decibel level (Ldn), which are descriptive of the total noise exposure at a given location for an annual average day.

The Noise Element identifies noise-impacted areas throughout Tulare County. These areas include lands which have existing or projected noise levels exceeding 60 decibels (dBA) Ldn. This decibel figure is considered to be the maximum normally acceptable noise level for single family residential areas. Roadways and traffic noise are the dominant source of ambient noise in the County. **Table 14** summarizes the daily traffic volumes along Avenue 384 from Road 80 to State Route (SR) 63.

Location	ADT	From Roadway Centerline			
		Distance (feet) to 70 Ldn Contour	Distance (feet) to 65 Ldn Contour	Distance (feet) to 60 Ldn Contour	Distance (feet) to 55 Ldn Contour
Avenue 384 from Road 80 to State Route 63	3,530	25	55	118	253

Source: 2010 General Plan Background Report

INFRASTRUCTURE

Infrastructure is defined as “the basic physical and organizational structures needed for the operation of a society or enterprise or the services and facilities.” This Hamlet Plan seeks to address deficiencies and the need for improvements to the drinking water system improvements, (wells, water distribution piping, and storage tanks), curbs, gutters, streets, and sidewalks).

Energy: Natural Gas/Electricity

Southern California Edison (SCE) is the main provider of electrical power in Tulare County, which maintains an extensive network of high-voltage and low-voltage electrical lines, substations, natural gas mains, and related facilities. In addition to power produced by its plants, SCE purchases power from other producers for use within its service area.

On a region wide basis, electrical demand has increased while the available power supply has remained fairly constant. As a result, during peak demand periods, the reserve capacity of the overall system has dropped at times to under 3%. In response, SCE has planned for more stringent measures as reserve capacity diminishes. These measures include voluntary cutbacks, cutbacks for major users with whom SCE has arrangements, and rolling blackouts.

⁷ Tulare County General Plan 2030 Update, August 2012; United States Department of Transportation, Federal Transit Administration. Transit Noise and Vibration Impact Assessment, FTA-VA-90-1003-06; May, 2006.

http://www.fta.dot.gov/documents/FTA_Noise_and_Vibration_Manual.pdf; United States Department of Transportation, Federal Transit Administration. Construction Noise Handbook, 2006.

http://www.fhwa.dot.gov/environment/noise/construction_noise/handbook/handbook09.cfm and http://www.fhwa.dot.gov/environment/noise/construction_noise/special_report/hcn04.cfm#sou

MONSON HAMLET PLAN

Water Quality

Monson until recently was not served by a public water system. Approximately 40 homes in the community of Monson obtained their drinking water from private domestic water wells, many of which are shared between multiple households. Nitrate levels in the area's groundwater have long been known to be high. In 2008, testing of a dozen domestic wells was conducted in the community of Monson. Testing results revealed nitrate levels between 46 and 130 parts per million (ppm), which are all over the EPA and California Maximum Contaminant level (MCL) of 45 ppm. Furthermore, the average level of nitrate contamination among the wells tested was 105 ppm which is over twice the MCL.

The community had been concerned about the quality and safety of their water, it is hard to know how to solve the community's water problems. SGC survey results show that 82% of people (that attended the SGC meeting) would like to be connected to a community water system, 18% did not respond to the question.

Monson is comprised of approximately 37 lots with approximately 40 residential units and a local store. All the residential lots had been served by a private water well and septic tanks. The local store was also served by an individual private water well but is still regulated as Transient Non-Community Water System (TNCWS).

Almost all of the wells had been shallow. Typical wells were 80 feet deep. Data indicate that between Fall of 2011 and Spring of 2014 water levels in one of the wells declined from 19 feet below ground surface to 49 feet - a drop of 30 feet and water levels in well in other wells have declined from 27 feet below ground surface to 63 feet a drop of 36 feet and this drop in the water table is accelerating as the drought continues. In May 2014 and July 2014, the depth to water in a single domestic well in Monson was measured. Results of the measurements show the water level dropped from 54 feet to 63 feet (9 feet) between May and July of 2014.

In 2015-16 funding was obtained by the County and a project was designed (**see Figure 7**) and installed in 2017, for Monson the project consisted of developing a well site to include a well, 50,000-gallon water storage tank, installation of approximately 32 water services (more services were added beyond those originally indicated on the sheet) and the associated distribution piping to serve residents. A layout of the system and the services is shown on the attached drawing. The project was funded by the United States Department of Agriculture Emergency Community Water Assistance Grant, a grant from the State Water Resources Control Board and a grant from the Department of Water Resources. Construction began in March of 2017 and was completed in September of 2017, Sultana CSD will manage the system.

MONSON HAMLET PLAN

Sewer

No public sewer facilities are available in Monson. Each land owner relies on septic systems for wastewater.

Storm Drainage

“A storm drainage system is designed to drain excess rain and groundwater (from roads, sidewalks, etc.) to some point where it is discharged into a channel, ponding basin, or piped system. The system itself typically consists of pipes connecting inlets and is facilitated by curbs and gutters, manholes, and sumps. The operation of the system consists of runoff being collected in the inlets and transported by pipes to a discharge location. Manholes provide access to storm drain pipes for inspection and cleanout. A sump is a shallow, artificial pond designed to infiltrate storm water through permeable soils into the groundwater aquifer. It does not typically discharge to a detention basin.

Storm drainage systems should be designed so they have adequate capacity to accommodate runoff that enters the system for the design frequency and should also be designed considering future development. An inadequate roadway drainage system could result in the following:

- ✓ Water overflowing the curb and entering adjacent property leading to damage
- ✓ Accelerated roadway deterioration and public safety concerns may occur due to excessive water accumulation on roadways
- ✓ Over saturation of the roadway structural section due to immersion will lead to pavement deterioration

Monson does not currently have a storm drainage system.”⁸

Solid Waste

Solid waste disposal services for the Community of Monson is provided by Pena’s Disposal, a private company. Solid waste generated in Monson can be disposed of at Visalia Landfill, located at 22466 Road 80, Visalia.

Roads

There are several roadways in Monson that are in need of repair. Over time, roadway pavement can become damaged or begin to fail due to fatigue, aging, or surface abrasion. The binding agent within road pavement becomes rigid and less flexible as time passes and the surface of the pavement may start losing aggregates. If timely maintenance does not occur, potholes will start to occur within the road.

If the road is still structurally sound, a bituminous surface treatment, such as a chip seal or surface dressing can prolong the life of the road at low cost. Such repairs are considered medium if the maintenance strategy consists of:

- ✓ Chip seal - surface treatment in which the pavement is sprayed with asphalt and then immediately covered with aggregate and rolled. Chip seals are used primarily to seal the surface of a pavement with cracks not associated with heavy loads.

⁸ Action Program 9, Tulare County 2015 Housing Element

MONSON HAMLET PLAN

Some roadways require more extensive repairs such as resurfacing, grinding, remix and or reconstruction. These repairs are considered major if the maintenance strategy consists of:

- ✓ Grind and remix - process by which construction materials are recycled and reused to add structure to roadways.
- ✓ Overlay resurfacing operation - consists of grinding off selected areas of old asphalt, patching any potholes, placing a fabric (in some cases), placing and compacting hot mix asphalt pavement, and adjusting any street hardware.
- ✓ Asphalt reconstruction - consists of excavating the entire roadway, placing and compacting rock beneath the roadway, and placing and compacting hot mix asphalt.
- ✓ Cold mix reconstruction - similar to asphalt reconstruction except cold mix asphalt is used. It is commonly used as patching material and on lower volume service roads.”⁹

Table 15 lists the roadways in need of repair, the limits, and type of maintenance strategy proposed. **Figure 7** graphically displays this information on a map.

Table 15 - Roads in Need of Major and Medium Repair in Monson

Road Maintenance Strategies			
No.	Roadway	Limits	Repair Code
1	Avenue 388	Monson Drive to Road 108	CHIP
2	Monson Drive	Simpson Drive to Road 104	CHIP
3	Monson Drive	Avenue 384 to Simpson Drive	GRX
4	Road 104	Avenue 388 to Monsoon Drive	CHIP
5	Simpson Drive	Avenue 384 to Monson Drive	CHIP

OLAY – overlay resurfacing operation	ACST – asphalt reconstruction
CHIP – chip seal	RCST – cold mix reconstruction
GRX – grind and remix	

(Source: County of Tulare Public Works, 2012)

Street Lights

Table 16 identifies the location of existing street lights that are maintained by Tulare County, in Monson, as well as their specifications. **Figure 8** also displays this information graphically. The below table specifies the locations, the pole number, lumens, pole type, arm direction and utility provider. Pole numbers can be arbitrary and are used to match the pole specifications with its location. Lumens measure the amount of light emitted from the bulb (the more lumens the brighter the light). The pole type “W” represents a wood post for which the light is commonly shared with a Utility provider. Similarly, "M" represents metal and "C" represents concrete.

Table 16 - Specifications of Existing Street Lights

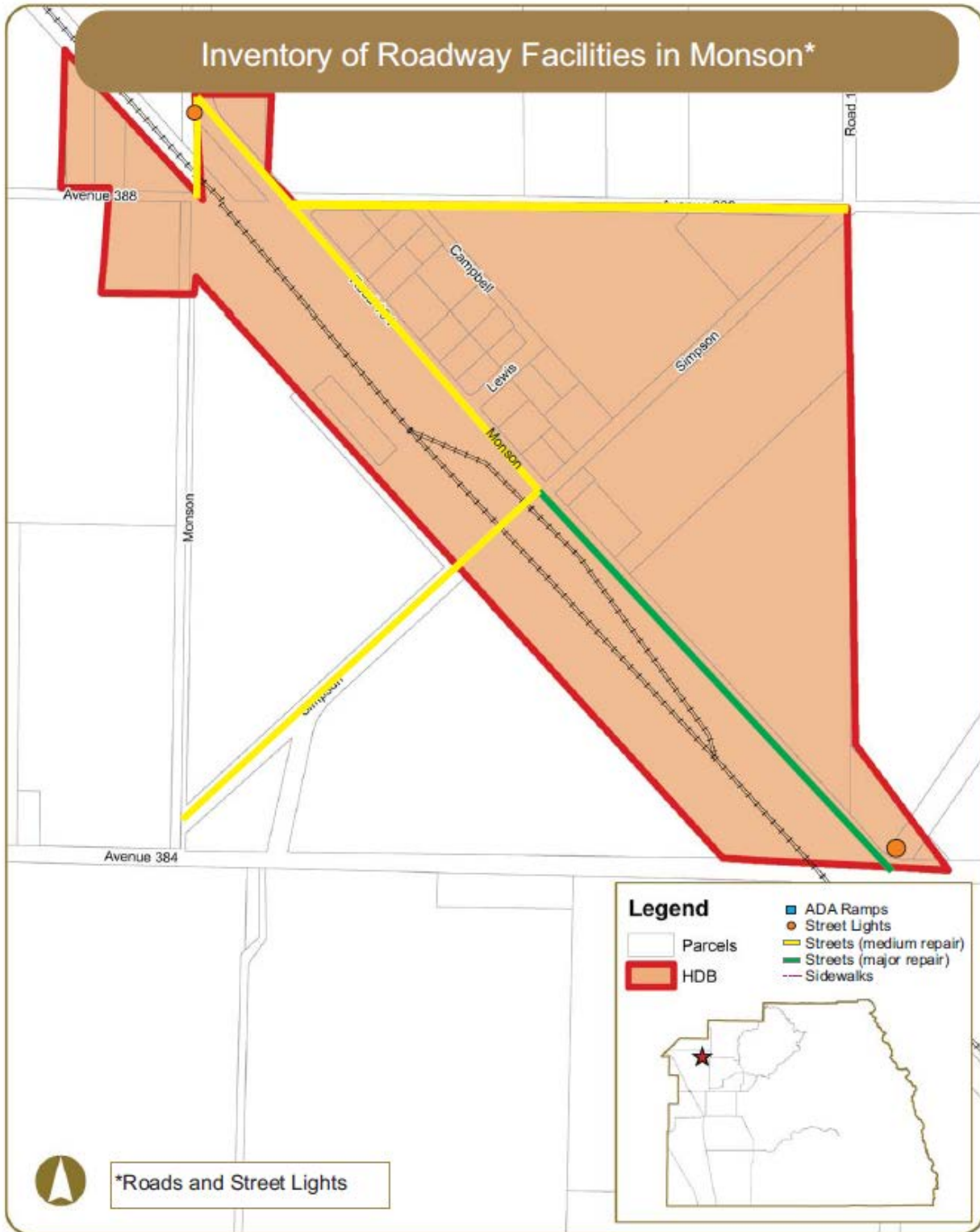
Specifications of Existing Street Lights								
No.	East-West Roadway	North-South Roadway	Location	Pole	Lumens	Pole Type	Arm Direction	Utility
1	Avenue 384	Monson Drive	NE Corner	5	9500	W	S	PG&E
2	Road 104	Monson Drive	NE Corner	2454	9500	W	E	PG&E

(Source: Tulare County Public Works, March 2013)

⁹ Action Program 9, Tulare County 2015 Housing Element

MONSON HAMLET PLAN

Figure 8 - Monson Inventory of Roadway Facilities



MONSON HAMLET PLAN

Sidewalks

There are currently no sidewalks located within Monson.”¹⁰ Street lights are typically located at the edge of roadways on top of utility poles. They are illuminated at night and improve the visibility and safety of the roadway and sidewalk by increasing motorist visibility and improving nighttime pedestrian security. They can also reduce nighttime pedestrian crashes by increasing the awareness of drivers relative to pedestrians.

The 2010 California Building Code identifies a clear width minimum of 48 inches for sidewalks. This clear width minimum is the walkway width that is completely free of obstacles and not necessarily the sidewalk width. However, the 48-inch minimum does not provide sufficient passing space or space for two-way travel. Therefore, the guidelines state that for sidewalks less than 5 feet in clear width, passing lanes (wide enough for wheelchairs) shall be provided at 200-foot intervals. However, the clear width may be reduced to 3 feet if the enforcing agency determines that compliance with the 4-foot clear sidewalk width would create an unreasonable hardship due to right-of-way restrictions, natural barriers, or other existing conditions.

ADA Curb Ramps

“The Americans with Disabilities Act (ADA) of 1990 included design requirements for persons with disabilities in the public rights-of-way. Curb ramps are an important part of making sidewalks and street crossings accessible to people with disabilities (especially those who use wheelchairs). An ADA compliant curb ramp is a short ramp cutting through or built up to a curb. It consists of the ramp itself which is sloped to allow wheelchair access from the street to the sidewalk and flared sides that bring the curb to the level of the street.

Curb ramps are most typically found at intersections, but can also be located near on-street parking, transit stations and stops, and midblock crossings. Title II regulations require curb ramps at existing and new facilities.

The County of Tulare completed a survey of ADA compliant ramps within the communities in August 2012. According to the survey, there are no ADA compliant curb ramps located within Monson.”¹¹

Transit and Bus Stops

County of Tulare provides public transportation services to the elderly, handicapped, low-income, and residents without access to transportation.

The Tulare County Transit Agency (TCAT) operates fixed-route services that link communities with each other and with Visalia and Tulare’s urban transit systems. Public transit is currently not available in Monson. Tulare County Transit Agency (TCAT) operates Dial-A-Ride Service Monday through Friday. Reservations must be placed the day before planned trip for a curb to curb trip on Dial-A-Ride. (TCAT website at: <http://www.tularecounty.ca.gov/rma/index.cfm/public-works/tulare-county-area-transit-tcat/>). TCAT vehicles are wheelchair accessible and all full size buses include bike racks. As such, public transit is likely to remain a limited option due to fiscal constraints and the high cost of providing services to a community of less than one thousand residents.

¹⁰ Action Program 9, Tulare County 2015 Housing Element

¹¹ Action Program 9, Tulare County 2015 Housing Element

MONSON HAMLET PLAN

The low level of auto congestion in Monson, now and as forecasted into the future, suggests that driving will continue to be more convenient in rural communities than the use of transit for those with access to a private car.

Bicycle Facilities

The 2014 Regional Transportation Plan (adopted June 30, 2014) prepared by the Tulare County Association of Governments (TCAG) provides for a regional bicycle network intended to provide a safe alternative mode of travel. The 2014 RTP identified Road 80 as a proposed Class III and State Route 63 as a proposed Class II Bike Projects¹². In Tulare County, bicycle travel is not a major mode of transportation and bicycles are rarely used outside of cities and towns. The current bicycle plan provides for connections between the major urban areas and recreation facilities in the County and is expected to be satisfactory for the foreseeable future. There are two bike route near the community of Monson, Road 80 and State Route 63.

AMTRAK

The Hanford AMTRAK station, located approximately 45 miles to the southwest in Kings County, is the closest station to Monson providing passenger rail service. The San Joaquin Joint Powers Authority (SJJPA) is comprised of ten agencies (including TCAG) currently oversees the operation of seven daily trains serving this station. Service is provided to points north including San Francisco and Sacramento and to points south including Bakersfield and the Los Angeles basin (via connecting Amtrak Thruway) bus service.

Aviation

The nearest operational general aviation airport is Visalia Municipal Airport is approximately 25 miles south. Fresno Yosemite International Airport (FAT), approximately 40 miles northeast of Monson, is a principal passenger and airfreight airport in the central San Joaquin Valley. Meadows Field (BFL), Bakersfield's principal commercial airport, is approximately 90 miles southeast of Monson and offers direct flights to several destinations

PUBLIC SERVICES

Community Resource Center

The community lacks many resources and needs a place where residents can go to access information and county wide resources. People in Monson expressed the need for a Community Resource Center. This center would be a multi-purpose building that could be used by kids for homework help, afterschool programs and as a computer lab. It was also suggested that the center should also be available for use by outside organizations that need a place to service Monson residents. This could also be the place where residents access a reliable internet connection.

Sheriff

Police protection services are provided in Monson by the Tulare County Sheriff's Department sub-station, located 40765 Road 128, in Culter, approximately five (5) miles northeast of Monson. The substation provides patrol services 24-hours per day, 365 per year. Additional Sheriff resources are available as needed via dispatch from the main Sheriff's Office in Visalia, CA.

¹² TCAG Action Element, TCAG 2014 Regional Transportation Plan. Page 3-89.

MONSON HAMLET PLAN

Fire

There are currently no Fire Hydrants in Monson. Fire protection and emergency medical services are provided for Monson by the Tulare County Fire Department. The community is served by Dinuba Station #3, located at 40404 Road 80, in Dinuba. Parade 1, Engine 3 and Water Tender 3 is assigned to this location.

Schools

Schools are an essential component of a community. The quality of residential development is often measured by whether schools exist in close proximity to the neighborhood. As a result, schools are often a gravitational factor in attracting residential development to certain areas of a community. The Monson Hamlet Plan Area is within the Monson-Sultana Joint Union School District. The District provides K-8 grade education at its Monson-Sultana School four (4) miles away. High School students attend high school in Dinuba. Monson is within the Dinuba Union Joint High School District.

Libraries

“The Tulare County Public Library System is comprised of interdependent branches, grouped by services, geography and usage patterns to provide efficient and economical services to the residents of the county. At present, there are 14 regional libraries and one main branch.”¹³ The closest library is located in Dinuba, approximately eight (8) miles to the northwest (see Table 17).

Table 17 - Library Location & Hours		
Branch	Address	Service Hours (2017)
Dinuba	Dinuba Branch Library 150 South I Street Dinuba, CA 93618-2399 (559) 591-5829	Tuesday to Friday: 9:00 a.m. – 1:00 p.m., 2:00 p.m. – 6:00 p.m.

Library hours current as of September 2017

Parks

Presently there are no County owned/operated public parks in Monson. The closest public park to the community is Dinuba Community Park, located approximately eight (8) miles to the northwest.

THE MONSOON HAMLET PLAN

CIRCULATION AND TRAFFIC

For a land use plan to operate effectively, it is imperative that a comprehensive circulation plan be prepared. Existing roadways must have the capacity to expand as traffic counts increase, and new roads must be planned so that one part of the community can be connected to another.

“The purpose of the highway, streets and roads section is to identify the existing regional circulation system and determine both feasible short-term and long-range improvements. Tulare County's planned circulation system consists of an extensive network of regional streets and roads, local streets and State Highways. The system is designed to provide an adequate [Level of Service] LOS that satisfies

¹³ General Plan Background Report, page 7-96

MONSON HAMLET PLAN

the transportation needs of County residents. However, Tulare County has experienced a large increase in population and is beginning to outgrow portions of the circulation system. The need for major improvements to the State Highways, streets and roads network is an important issue.

The existing State Highway system was completed in the 1950's and 60's. The average design life of a State Highway is approximately 20 years and many Tulare County's highways were constructed 50 years ago. The Agricultural and commercial industry continue to utilize the circulation system to get products to market. With industry intensification and other development, many facilities are beginning to show structural fatigue (e.g., surface cracks, potholes, and broken pavement)."¹⁴

Traffic

"Tulare County is linked to Fresno County and Kern County principally by State Route 99. This route provides the only continuous north-south route through the County and is heavily used for regional travel. The entire length of State Route 99 in Tulare County and State Route 198 through Visalia and a portion of State Route 65 in Porterville are constructed to freeway standards."¹⁵

Freeways provide for the ability to carry large traffic volumes at high speeds for long distances. Access points are fully controlled. Freeways connect points within the County and link the County to other parts of the State.

Arterials provide for mobility within the County and its cities, carrying through traffic on continuous routes and joining major traffic generators, freeways, and other arterials. Access to abutting private property and intersecting local streets shall generally be restricted.

Collectors provide for internal traffic movement within communities, and connect local roads to arterials. Direct access to abutting private property shall generally be permitted.

Local Roads provide direct access to abutting property and connect with other local roads, collectors, and arterials. Local roads are typically developed as two-lane undivided roadways. Access to abutting private property and intersecting streets shall be permitted.

Existing Circulation and Transportation Conditions

Monson is a small agricultural community located near State Route 201. The major rural collector roads is Avenue 308. There are no proposed major streets as part of this Hamlet Plan.

Patterns of Blocks and Streets

The prominent grid pattern of County roads provides efficient and direct collector routes that provide ease of travel from place to place.

¹⁴ 2014-2040 Regional Transportation Plan & Sustainable Communities Strategy, Tulare County Association of Governments (TCAG), June 2014. Page 3-54.

¹⁵ Tulare County General Plan Background Report, page 5-7.

MONSON HAMLET PLAN

Complete Streets

The California Complete Streets Act (AB 1358) of 2008 was signed into law on September 30, 2008. Beginning January 1, 2011, AB 1358 requires circulation elements to address the transportation system from a multimodal perspective. The bill states that streets, roads, and highways must “meet the needs of all users in a manner suitable to the rural, suburban, or urban context of the general plan.” The Complete Street roadway typically includes sidewalks and sidewalk amenities, transit shelters and facilities whenever there is a route along the corridor, and provisions for bicycle facilities.

GOALS, OBJECTIVES AND POLICIES

This Section of the Monson Hamlet Plan describes the land use policy framework which will govern the development of the community through the year 2030. It includes text, which sets out explicit policy statements about the quality, character, and manner in which development in the community will take place. The land uses in all the Hamlet Boundaries were updated in 2012 to reflect a “mixed use land use designation.” The following land use designations and descriptions, with densities and intensities are recommended for Monson to address land demand needs through the 2030 planning horizon year.

Goals, objectives and policies are the fundamental building blocks of the planning process. Goals describe the desirable results to which the plan is committed while objectives describe the intermediate steps or achievements which must be taken to reach the goals. Policies describe more specific actions or processes which must be undertaken in order to achieve objectives. The goals, objectives and policies of this community plan are based on those contained in the Tulare County 2030 General Plan, Monson Hamlet Plan, and input received from Monson citizens during the public outreach process. The goals, objectives and policies are divided into four categories: Community Development, Housing, Economic Base, and Environmental Quality.

Community Development

GOAL I: Foster a cohesive community with easy access to necessary services and support facilities

Objective: Prevent premature urban-type development on agriculturally productive lands.

Policies:

1. Encourage in-filling of vacant land and compatible development on underdeveloped land as a priority before development of agriculturally productive lands.

GOAL II: Avoid land use conflicts through planning separation of uses.

Objective: Promote concentrations of similar or compatible uses.

Policies:

1. Establish areas zoned exclusively for industry, commerce and residences consistent with the policies in this plan.
2. Phase-out existing nonconforming commercial and industrial concerns within planned residential areas through appropriate zoning amortization procedures.
3. Locate high density residential uses in close proximity to planned shopping areas.
4. Require public, quasi-public and high density residential uses to locate where direct access to major streets is available.

MONSON HAMLET PLAN

5. The County shall ensure that solid waste facility sites (for example, landfills) are protected from the encroachment by sensitive and/or incompatible land uses.
6. The County shall cooperate with all affected school districts to provide the highest quality educational services and school facilities possible.
7. The County shall work with the Schools to provide safe routes to school.
8. The County of Tulare will solicit recommendations from all interested public agencies on matters regarding the Monson Community Plan.
9. The Monson Hamlet Plan should be reviewed every five years to determine if amendments are appropriate.
10. When considering any land use proposal, capital expenditure or other matters of community importance, the County of Tulare will request input from the local service district and other affected agencies.

Objective: Provide for appropriate buffers between areas set aside for commercial activities and single family residential uses.

Policies:

1. Require adequate setbacks, side and rear yards, landscaping and screening between living and working areas.
2. Utilize roadways, railroad right of ways and other physical features to separate planned living and working areas.

Housing

GOAL I: Provide safer and adequate housing for all citizens within the community.

Objective: Reduce deficiencies in existing housing stock.

Policies:

1. Apply the health, safety and welfare standards of the Tulare County Ordinance Code, which may require demolition of vacant substandard housing units.
2. Encourage relocation of families from substandard housing units by expanding affordable housing opportunities within the community.
3. Inform potential rehabilitators of substandard housing that incentives such as reduced building permit fees are available.
4. Encourage housing advocacy groups, such as Habitat for Human and Self-Help Enterprises, to initiate home maintenance/repair programs in Monson.

Objective: Encourage new housing construction within the community to meet the needs of low and moderate income residents.

Policies:

1. Enable the housing industry to proceed with construction in a timely and cost-efficient fashion by providing adequate amounts of residential zoning.
2. Assure that the housing industry is made aware of residential development potentials in Monson.
3. Coordinate residential zoning with availability of utilities and community services.
4. Provide adequate amounts of residential zoning to encourage the housing industry to proceed with construction of residential development in a timely and cost-efficient fashion.
5. Encourage housing advocacy groups, such as Habitat for Human and Self-Help Enterprises, to construct new housing.

Objective: Provide a role for mobile homes in satisfying community housing needs.

MONSON HAMLET PLAN

Policies:

1. Allow for development of mobilehome parks in appropriate locations.
2. Permit mobilehomes to be installed on residentially designated lots within the original townsite; however, mobilehomes shall not be allowed to occupy more than 25% of such lots.
3. Discourage mobilehomes on individual lots outside the original townsite, except when necessary for caretaker use in conjunction with commercial and industrial activities.
4. Require skirting or some other type of architectural screening to improve mobilehome appearance and safety.
5. Provide a role for mobilehomes and travel trailers in satisfying the seasonal housing needs of migrant populations.

Economic Base

GOAL I: Develop a strong and diversified economy.

Objective: Provide sufficient land for industrial and commercial development to meet the needs of the community and region and strengthen and maintain a viable community economy.

Policies:

1. Promote a concentration of industrial and commercial activities within selected areas to allow for cost efficient provision of necessary services and to protect residential neighborhoods.
2. Zone an area for a community shopping center in the northeastern portion of the community to meet local consumer needs.
3. Reserve areas with convenient highway access for highway-oriented commercial development, thereby encouraging outside cash flow into the community.

Objective: Provide the services necessary to support new industrial and commercial development.

Policies:

1. Encourage the Monson to give priority to community service development in the areas reserved for commercial and industrial growth on the plan.
2. Place emphasis on development and upgrading of water supply facilities to meet fire protection standards in planned commercial and industrial areas.

Objective: Provide the necessary safe guards to attract quality industrial and commercial development to the community.

Policies:

1. Assure that commercial and industrial developments are designed so that traffic will not impact upon residential areas.
2. Develop standards for signs, landscaping, and fencing to improve the attractiveness of industrial and commercial areas.

Environmental Quality and Public Safety

GOAL I: Preserve and enhance the quality of life for present and future generation of Monson citizens.

Objective: Upgrade the level of community health, sanitation and safety.

Policies:

1. Encourage capital improvements (curbs, gutters, streets paving, lighting, etc.) within existing developed areas which will upgrade the community image and improve safety.
2. Tulare County shall, within its authority, protect the public from danger to life and property caused by fire.
3. Tulare County shall, within its authority, protect the public against crime against people and property.

MONSON HAMLET PLAN

Objective: Provide sufficient open space for community recreation needs.

Policies:

1. Encourage reservation of open space for recreational purposes in conjunction with future residential developments.
2. Facilitate innovation in housing and subdivision design so that private recreation and open space areas can be accommodated.

Objective: Protect Agricultural Lands:

Land within the respective Monson, which is designated as residential reserve, commercial reserve, or industrial reserve shall be retained in agricultural use until such time as conversion to urban use (as defined in the Tulare County General Plan) is appropriate.

When a rezoning occurs without a general plan amendment, the reserve designation shall be removed from the parcel.

The following criteria shall be used to determine when conversion to urban use is appropriate:

- The property is not subject to an agricultural preserve contract;
- Full urban services, schools, and infrastructure sufficient to serve urban development either are available or can be made available; and
- At least 30 % the property boundaries are contiguous on at least one side to existing urban development.
- Until productive agricultural lands are ready to be developed they shall be retained in parcels of sufficient size to allow agricultural uses.

Objective: Prohibit to the extent allowed by law activities that will have a significant adverse effect on the environmental quality of Monson.

Policies:

1. Prohibit to the extent allowed by law residential development in excess of seven families per acre, until a sewage collection system is constructed.
2. Require a sufficient lot area for all new residential development to ensure an adequate area for on-site sewage disposal until a sewage collection system is constructed.
3. Prohibit to the extent allowed by law new intensive animal raising operations within the "windshed" area of Monson.

MONSON HAMLET PLAN

ASSESSMENT OF LAND NEEDS

Within the existing 115 acre Monson Hamlet Development Boundary, agricultural activities, such as orchards and pasture, currently constitute 86.0% of the HDB Area.

The ratio of urbanized acres per person is calculated by dividing the year 2015 population of 237 by 3.89 urbanized acres (area within the HDB), which equals 61 persons per urbanized acre (see **Tables 18 and 19**) showing population projections). Projecting the population at a 1.3% growth rate adds 51 persons by year 2030.

Population Growth Forecast

Growth Rate	2015	2020	2030
0.013	237	253	288

Year	Population	Growth (%)
2015	237	0.013
2016	240	0.013
2017	243	0.013
2018	246	0.013
2019	250	0.013
2020	253	0.013
2021	256	0.013
2022	259	0.013
2023	263	0.013
2024	266	0.013
2025	270	0.013
2026	273	0.013
2027	277	0.013
2028	280	0.013
2029	284	0.013
2030	288	0.013

Demand Forecast

To determine whether there is enough land within the exiting HDB to accommodate anticipated growth within the community, the population growth and land use projections in year 2030 were compared to the vacant land available within the HDB.

Population and Housing Units

The Year 2015 baseline population and was determined by projecting the 2015 American Community Survey (Survey)¹⁶ data population by an annual growth rate of 1.3% annually. The Survey indicated that in year 2015 the community had 62 dwelling units (including vacant dwellings) with a population of 237. At an annual growth rate of 1.3%, the projected housing units are 66 and 75 in years 2020 and 2030, respectively, and projected population is 263 and 288 in years 2020 and 2030, respectively.

ECONOMIC DEVELOPMENT

Tulare County’s current Economic Development Strategy focuses on the agricultural industry and pursuing grants. In rural areas, elimination of all barriers to economic development is the foundation for growth. This Plan addresses the following four potential barriers to Economic Development.

¹⁶ See: http://factfinder.census.gov/faces/nav/jsf/pages/community_facts.xhtml.

MONSON HAMLET PLAN

Infrastructure

In order for more development to occur, water service levels need to be expanded, for which grant funding will be required.

Use Permits

There are a number of uses that currently require Planning Commission approval. In many cases, these uses are beneficial for the community and do not necessarily require a discretionary review. In order to reduce the cost of and length of time to obtain entitlements, use permit requirements are being reduced.

Education

Tulare County has five satellite campuses for four year universities: California State University-Fresno, University of California- Davis, Fresno Pacific University, Brandman University, and the University of Phoenix. Community Colleges in Tulare County include the College of the Sequoias, Porterville College, and San Joaquin Valley College. Workforce Development Partners include Proteus Inc., and CSET

Based on the 2011-2015 American Community Survey (**see Table 20**), the educational barrier in Monson begins in grade school. Of the adults age 25 and older, 20.5% had an educational level of less than 9th grade. A lack of education could limit the types of jobs that these adults would be qualified to undertake. Improving educational attainment should to begin in elementary school. As part of the Safe Routes to Schools, Tulare County will provide pedestrian facilities for children to walk or bike to school. This would provide a safer and easier route for children to get to and from school.

Table 20 - Education Attainment			
Educational Attainment	California	Tulare County	Monson
Population 25 years and over	25,257,858	260,964	127
Less than 9th grade	10.0%	20.8%	20.5%
9th to 12th grade, no diploma	8.2%	10.9%	7.9%
High school graduate (& equivalency)	20.7%	25.2%	37.8%
Some college, no degree	21.8%	22.3%	0.0%
Associate's degree	7.8%	7.0%	7.1%
Bachelor's degree	19.8%	9.5%	23.6%
Graduate or professional degree	11.6%	4.3%	3.1%

2011-2015 American Community Survey 5-Year Estimates

MONSON HAMLET PLAN

LAND USE AND ZONING ACREAGES

Land Use and Zoning District Updates

Based on the forecasted growth and the recommended Hamlet Development Boundary in the Opportunities and Constraints Analysis, the Land Use Plan (see **Table 21**) and Zoning Districts (see **Table 22**) have been updated.

Table 21 - Proposed Land Use	
Proposed Land Use	Acres
Mixed Use	104.8
Right-of Ways	14.9
Monson HDB	119.7

Table 22 - Proposed Zoning District	
Proposed Zones	Acres
AE-10	43.9
C-2-MU	19.1
M-1	31.6
R-A-43	10.2
Right-of Ways	14.9
Monson HDB	119.7

IMPLEMENTATION STRATEGY

The purpose of this section is to describe a proposed approach to implement the general plan recommendations contained in the Monson Hamlet Plan. The following components comprise the Monson Community Plan implementation strategy:

Limitation of the A-1 Zoning District. Zoning Code Changes (changes to Use Permit issuance, eliminating the SR Combining Zone, Mixed-Use Overlay District, Zoning Map Update), Complete Streets/Safe Routes to School

Zoning District Changes

As part of this Implementation Program for the Monson Hamlet Plan, there are several proposed changes to existing zoning districts. These changes are described below.

Chapter 16 of the Zoning Code

Revise Chapter 16 of the Zoning Code to limit the Uses that require a Use Permit. As part the Economic Development Strategy, use permit requirements are streamlined to allow for uses to be developed without discretionary review. That is, proposed uses will not have to undergo an approval process that involves a decision making action by the Tulare County Planning Commission or Board of Supervisors. Project design features and Administrative approval will serve as the mechanism to allow (regulate) land uses, activities, densities, and other conditions typically applied through the special use permit process.

Mixed Use Overlay District

This alternative involves the creation of a Mixed Use Zoning Designation for the Community of Monson.

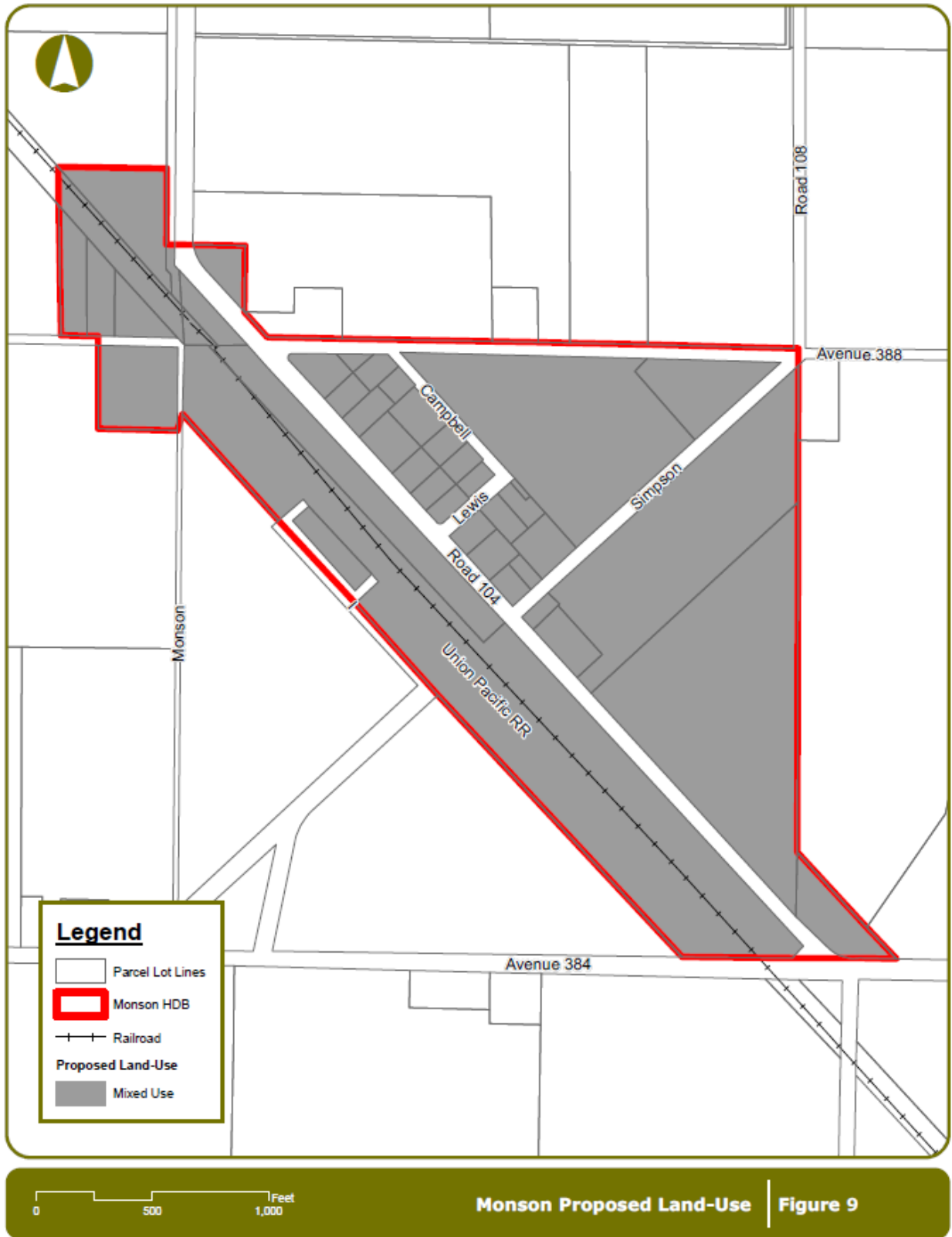
MONSON HAMLET PLAN

Zoning Map Update

The current Zoning Map for Monson (**see Figure 10**) will be amended to be compatible with the Land Use Map (**see Figure 9**) outlined in the General Plan. There are a couple of zoning district changes that are proposed to allow the General Plan and Zoning Ordinance (**see Figure 11**) to be in conformity with each other Monson Proposed Zoning. **Figure 12** show the proposed Monson Urban Development Boundary.

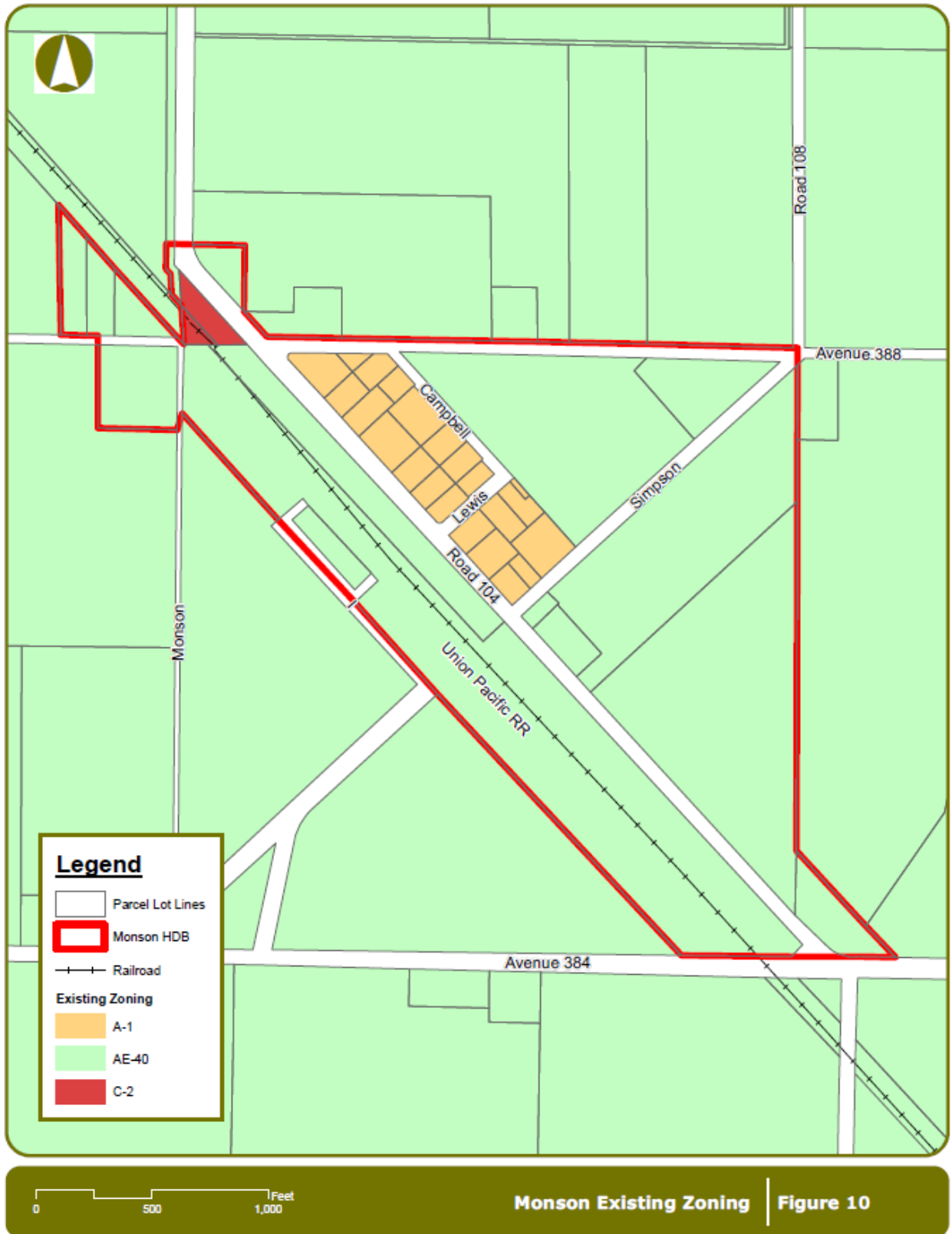
MONSON HAMLET PLAN

Figure 9 - Proposed Land Use Plan



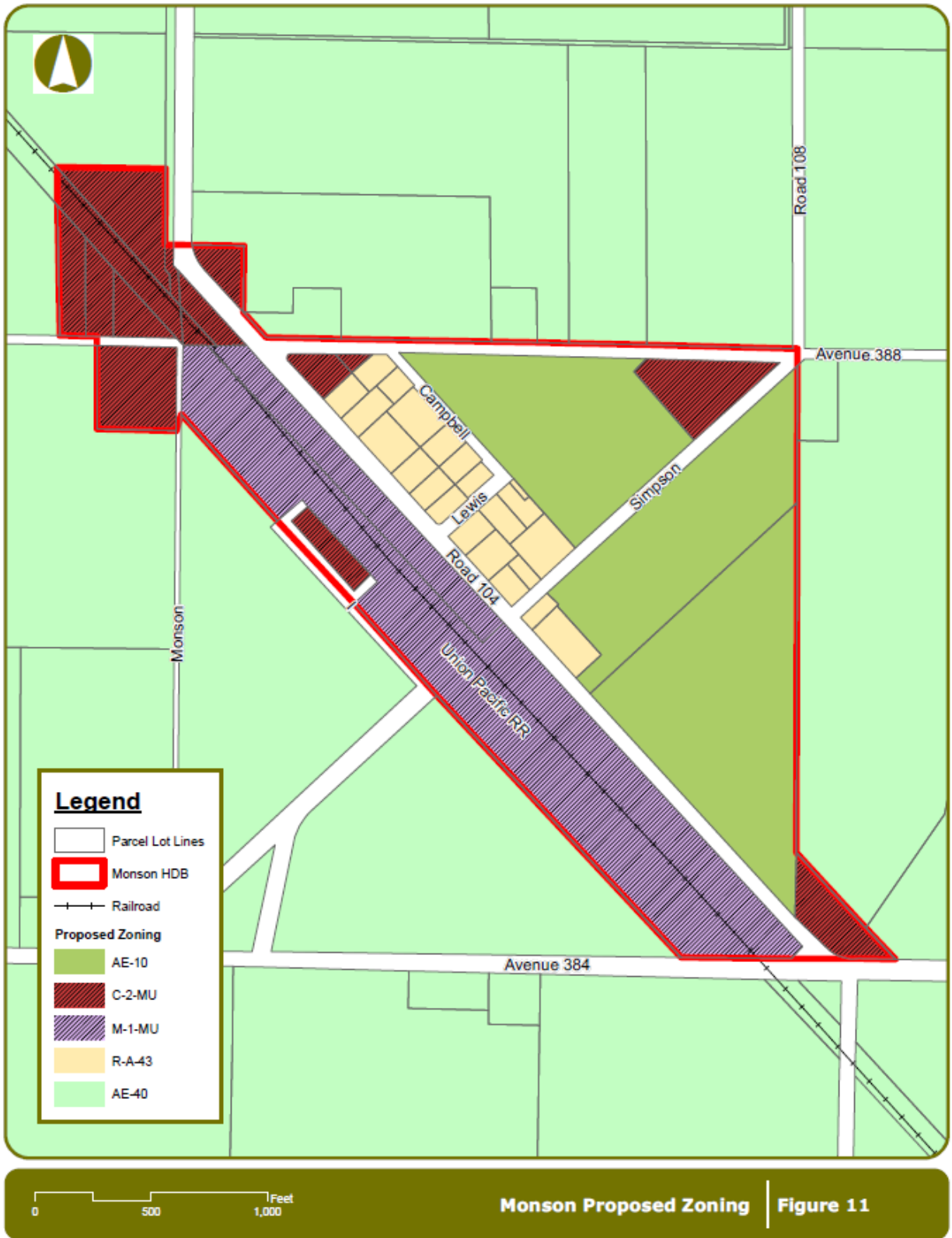
MONSON HAMLET PLAN

Figure 10 - Existing Zoning Districts



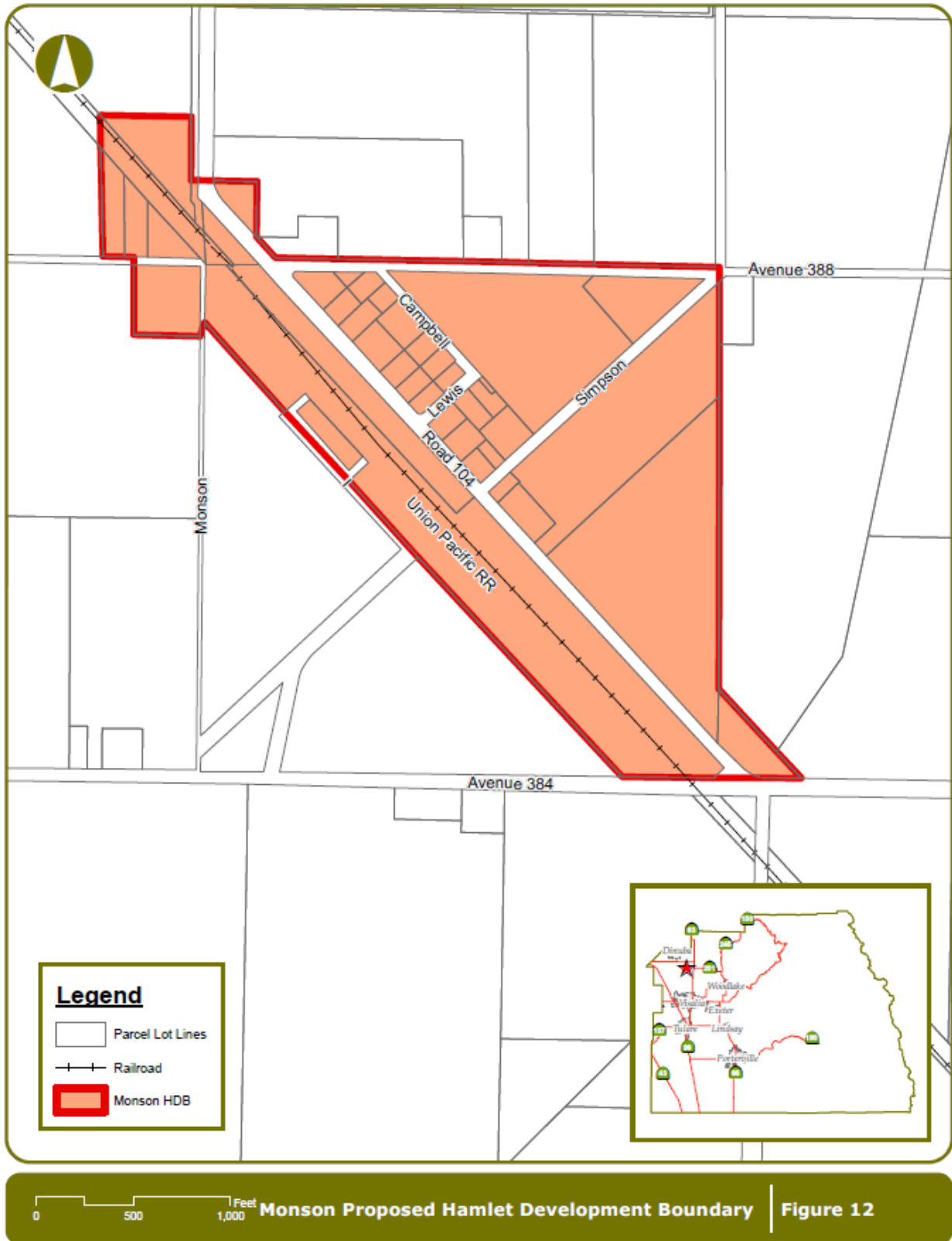
MONSON HAMLET PLAN

Figure 11 - Proposed Zoning Districts



MONSON HAMLET PLAN

Figure 12 - Proposed Monson HDB



MONSON HAMLET PLAN

ATTACHMENTS

- A-1 – Use Permit Requirement Changes (Zone Change Text)
- A-2 – Mixed Use Overlay District (Zone Change Text)
- A-3 – Development Standards (Mixed Use Zoning District)

MONSON HAMLET PLAN

A-1 Use Permit Requirement Changes (Zone Change Text)

H. Permitted Uses

All of the following, and all structures and accessory uses directly related thereto in this section are entitled without a Special Use Permit (Conditional Use Permit). The following is allowed only in the various zones indicated below and within a community plan that adopted development standards for such entitled use. The proposed use must adhere to the adopted development standards of the community. The proposed use must also qualify for an exemption under the California Environmental Quality Act as determined by the Permit Center. The Permit Center will review the project for General Plan Policy, Community Plan Policy and development standard consistency and determine which environmental document is appropriate. Projects where the Permit Center is unable to make an immediate determination will be required to go through the Project Review Committee (PRC).

Uses that have an environmental effect on adjacent properties or necessitate mitigation measures through the California Environmental Quality Act will be required to apply for a PRC and a traditional use permit and legislative process through the County. These uses may have environmental or land use issues that may not be compatible with adjacent uses. These impacts may include but are not limited to; hours of operation (night time), noise (i.e. power tools such as impact drivers, or loudspeaker, etc.) air quality (idle running vehicles) traffic, (number of vehicles) and odor. The Permit Center process is to determine the whether the use is by right or must go through the traditional use permit process. The following uses and zones shall be considered:

Permitted Uses		
Zoning District Uses	New Entitled Zone	Prior Entitled Zone
Animal hospital, clinic, and veterinarian office wherein only small/domestic animals (i.e. dogs, cats, etc.) are treated. Structure < 10,000 sq. ft.	C-1, C-2, C-3, M-1, M-2	
Antique and art store. Structure < 10,000 sq. ft.	C-2, C-3, M-1, M-2, R-3	C-2, C-3, M-1
Antique store containing less than one thousand (1,000) square feet of floor area	C-1, C-2, C-3, M-1, R-2, R-3	C-1, C-2, C-3, M-1
Apartment Hotel Structure < 10,000 sq. ft.	O, CO, C-1, C-2, C-3, M-1, R-3	O
Apparel stores. Structure < 10,000 sq. ft.	CO, C-1, C-2, C-3, M-1, R-3	C-1, C-2, C-3, M-1
Arcades, including video. Structure < 10,000 sq. ft.	O, CO, C-1, C-2, C-3, M-1, R-3	C-2, C-3, M-1
Zoning District Uses	New Entitled Zone	Prior Entitled Zone
Assemblage of people for educational or entertainment purposes. Structure < 10,000 sq. ft.	O, CO, C-1, C-2, C-3, M-1, M-2	
Assembly of electric appliances such as lighting fixtures, irons, fans, toasters and electric toys, refrigerators, washing machines, dryers, dishwashers and similar home appliances. Structure < 10,000 sq. ft.	C-2, C-3, M-1, M-2	M-1

MONSON HAMLET PLAN

Assembly of small electrical equipment such as home and television receivers. Structure < 10,000 sq. ft.	O, CO, C-1, C-2, C-3, M-1, R-3	M-1
Assembly of typewriters, business machines, computers, and similar mechanical equipment. Structure < 10,000 sq. ft.	O, CO, C-1, C-2, C-3, M-1, M-2, R-3	M-1
Automated car wash (coin operated only). Structure < 10,000 sq. ft.	O, CO, C-1, C-2, C-3, M-1, M-2, R-3, AP	C-2, C-3, M-1
Automobile parking lots, public parking areas or storage garages. Structure < 10,000 sq. ft.	O, CO, C-1, C-2, C-3, M-1, M-2, R-3, AP	
Automobile supply stores.	O, CO, C-1, C-2, C-3, M-1, R-3	C-2, C-3, M-1
Automobile washing, including the use of mechanical conveyors, blowers and steam cleaning.	C-2, C-3, M-1, M-2	C-3, M-1
Bakery [employing not more than five (5) persons on premises].	O, CO, C-1, C-2, C-3, M-1, R-3	C-1, C-2, C-3, M-1
Bakery goods store.	CO, C-1, C-2, C-3, M-1	C-2, C-3, M-1
Banks and financial institutions.	C-1, C-2, C-3, M-1, R-3	C-1, C-2, C-3, M-1
Barber shop or beauty parlor.	C-1, C-2, C-3, M-1, R-3	C-1, C-2, C-3, M-1
Bed and Breakfast Home with three or more guests rooms (Up to 5). Structure < 10,000 sq. ft.	CO, C-1, C-2, C-3, M-1, R-3, R-2	R-1
Zoning District Uses	New Entitled Zone	Prior Entitled Zone
Bicycle shops. Structure.	CO, C-1, C-2, C-3, M-1, R-3	C-2, C-3, M-1
Billiard or Pool hall Structure	C-2, C-3, M-1	C-2, C-3, M-1
Bird store or pet shop.	O, CO, C-1, C-2, C-3, M-1	C-2, C-3, M-1
Blueprinting and Photostatting shop.	CO, C-1, C-2, C-3, M-1, AP	C-2, C-3, M-1
Boat sales and service. Structure < 10,000 sq. ft.	O, CO, C-1, C-2, C-3, M-1	C-3, M-1
Book binding. Structure < 10,000 sq. ft.	O, CO, C-1, C-2, C-3, M-1, R-3	C-3, M-1
Book or stationary store. Structure < 10,000 sq. ft.	O, CO, C-1, C-2, C-3, M-1, R-3	C-1, C-2, C-3, M-1
Business and professional schools and colleges. Structure < 10,000 sq. ft.	CO, C-1, C-2, C-3, M-1	C-2, C-3, M-1
Business, professional and trade schools and colleges. Structure < 10,000 sq. ft.	CO, C-1, C-2, C-3, M-1	C-3, M-1
Catering Shops. Structure < 10,000 sq. ft.	CO, C-1, C-2, C-3, M-1	C-2, C-3, M-1
Ceramic shops. Structure < 10,000 sq. ft.	CO, C-1, C-2, C-3, M-1	C-2, C-3, M-1
Christmas tree sales lots as a temporary use.	CO, C-1, C-2, C-3, M-1	C-1, C-2, C-3, M-1

MONSON HAMLET PLAN

Church. Structure < 10,000 sq. ft.	CO, C-1, C-2, C-3, M-1	
Zoning District Uses	New Entitled Zone	Prior Entitled Zone
Clothes cleaning and pressing establishment. Structure < 10,000 sq. ft.	CO, C-1, C-2, C-3, M-1	C-1, C-2, C-3, M-1
Clothing and costume rental. Structure < 10,000 sq. ft.	CO, C-1, C-2, C-3, M-1	C-2, C-3, M-1
Confectionery store. Structure < 10,000 sq. ft.	CO, C-1, C-2, C-3, M-1	C-1, C-2, C-3, M-1
Conservatory of Music. Structure < 10,000 sq. ft.	CO, C-1, C-2, C-3, M-1	C-2, C-3, M-1
Contractor's Storage Yards.	CO, C-1, C-2, C-3, M-1, AP	
Dairy products store. Structure < 10,000 sq. ft.	CO, C-1, C-2, C-3, M-1	C-1, C-2, C-3, M-1
Department store Structure < 10,000 sq. ft.	CO, C-1, C-2, C-3, M-1	C-1, C-2, C-3, M-1
Digesters	M-1	
Drug store or pharmacy. Structure < 10,000 sq. ft.	CO, C-1, C-2, C-3, M-1	C-1, C-2, C-3, M-1
Dry goods or notions store. Structure < 10,000 sq. ft.	CO, C-1, C-2, C-3, M-1	C-1, C-2, C-3, M-1
Electric appliance stores and repairs Structure < 10,000 sq. ft.	CO, C-1, C-2, C-3, M-1	C-2, C-3, M-1
Expansion, Alteration or Replacement of non-conforming buildings and uses. Structure < 10,000 sq. ft.	CO, C-1, C-2, M-1, R-1, R-2, R-3, R-A	
Family Day Care Home, Large (Up to CA State maximum).	CO, C-1, C-2, R-1, R-2, R-3, RA	
Zoning District Uses	New Entitled Zone	Prior Entitled Zone
Family Day Care Home, small.	CO, C-1, C-2, R-1, R-2, R-3, RA	R-1, R-2 R-3, C-1, C-2, C-3, M-1
Feed and seed stores. Structure < 10,000 sq. ft.	CO, C-1, C-2, C-3, M-1, AP	C-3, M-1
Fire Station.	CO, C-1, C-2, C-3, M-1, AP	
Firewood sales yard.	CO, C-1, C-2, C-3, M-1	C-3, M-1
Florist shop. Structure < 10,000 sq. ft.	CO, C-1, C-2, M-1, R-1, R-2, R-3, RA	C-1, C-2, C-3, M-1
Furniture store. Structure < 10,000 sq. ft.	CO, C-1, C-2, C-3, M-1	C-2, C-3, M-1
Furniture warehouses for storing personal household goods, provided ground floor front is devoted to stores. Structure < 10,000 sq. ft.	CO, C-1, C-2, C-3, M-1	C-2, C-3, M-1
Gasoline filling station. Structure < 10,000 sq. ft.	CO, C-1, C-2, C-3, M-1	C-1, C-2, C-3, M-1
Gift, novelty or souvenir. Structure < 10,000 sq. ft.	CO, C-1, C-2, M-1, R-2, R-3, RA	C-2, C-3, M-1
Glass shop, retail, excluding major service activities. Structure < 10,000 sq. ft.	C-2, C-3, M-1	C-2, C-3, M-1
Grocery store. Structure < 10,000 sq. ft.	CO, C-1, C-2, C-3, M-1	
Grocery store, fruit store or supermarket. Structure < 10,000 sq. ft.	C-1, C-2, C-3, M-1	C-1, C-2, C-3, M-1
Zoning District Uses	New Entitled Zone	Prior Entitled Zone

MONSON HAMLET PLAN

Gunsmith shops. Structure < 10,000 sq. ft.	CO, C-1, C-2, C-3, M-1	C-3, M-1
Hobby and art supply store. Structure < 10,000 sq. ft.	CO, C-1, C-2, C-3, M-1	C-2, C-3, M-1
Hospital, sanitarium and nursing home. Structure < 10,000 sq. ft.	C-1, C-2, C-3, M-1, PO	
Household and office equipment and machinery repair shops. Structure < 10,000 sq. ft.	C-2, C-3, M-1, PO	C-3, M-1
Household appliance stores. Structure < 10,000 sq. ft.	CO, C-1, C-2, C-3, M-1	C-2, C-3, M-1
Ice storage house of not more than 5-ton storage capacity.	CO, C-1, C-2, C-3, M-1, AP	
Incidental manufacturing, processing and treatment of products. Structure < 10,000 sq. ft.	C-2, C-3, M-1	C-2, C-3, M-1
Interior decorating store. Structure < 10,000 sq. ft.	CO, C-1, C-2, C-3, M-1	C-2, C-3, M-1
Jail or correctional (public facilities only).	C-2, C-3, M-1, M-2	
Jewelry store, including clock and watch repair. Structure < 10,000 sq. ft.	CO, C-1, C-2, C-3, M-1	C-1, C-2, C-3, M-1
Laundries. Structure < 10,000 sq. ft.	C-2, C-3, M-1	C-3, M-1
Laundry, coin operated machines only. Structure < 10,000 sq. ft.	CO, C-1, C-2, C-3, M-1	C-1, C-2, C-3, M-1
Leather goods and luggage stores. Structure < 10,000 sq. ft.	CO, C-1, C-2, C-3, M-1	C-2, C-3, M-1
Linen supply services. Structure < 10,000 sq. ft.	C-2, C-3, M-1	C-3, M-1
Liquor store. Structure < 10,000 sq. ft. Not within 300' of residential/School Site.	CO, C-1, C-2, C-3, M-1	C-1, C-2, C-3, M-1
Zoning District Uses	New Entitled Zone	Prior Entitled Zone
Locksmiths. Structure < 10,000 sq. ft.	CO, C-1, C-2, C-3, M-1	C-2, C-3, M-1
Massage or physiotherapy establishment Structure < 10,000 sq. ft.	CO, C-1, C-2, C-3, M-1	C-2, C-3, M-1
Meat market or delicatessen store. Structure < 10,000 sq. ft.	CO, C-1, C-2, C-3, M-1	C-1, C-2, C-3, M-1
Medical and orthopedic appliance stores. Structure < 10,000 sq. ft.	CO, C-1, C-2, C-3, M-1, PO	C-2, C-3, M-1
Medical laboratory. Structure < 10,000 sq. ft.	CO, C-1, C-2, C-3, M-1, PO	C-2, C-3, M-1
Memorial building, theatre, auditorium. Structure < 10,000 sq. ft.	CO, C-1, C-2, C-3, M-1, R-3	
Micro-brewery. Structure < 10,000 sq. ft. *Allowed in C-1 and C-2 in conjunction with a restaurant.	M-1, M-2, C-3,*C-2,*C-1	M-2
Mini-warehouses. Structure < 10,000 sq. ft.	C-2, C-3, M-1, AP	C-3, M-1
Mobilehome for use by caretaker or night watchman.	CO, C-1, C-2, C-3, M-1	O, C-2, C-3, M-1
Motorcycle sales and service. Structure < 10,000 sq. ft.	C-2, C-3	C-3, M-1
Musical instrument repair shops. Structure < 10,000 sq. ft.	CO, C-1, C-2, C-3, M-1	C-3, M-1
Name plates. Structure < 10,000 sq. ft.	CO, C-1, C-2, C-3, M-1, R-3	R-3, C-1, C-2, C-3, M-1

MONSON HAMLET PLAN

Nursery school. Structure < 10,000 sq. ft.	CO, C-1, C-2, M-1, R-1, R-2, RA, R-3, R-A	
Office, business or professional. Structure < 10,000 sq. ft.	CO, C-1, C-2, M-1, R-1, R-2, R-3, PO	C-1, C-2, C-3, M-1
Zoning District Uses	New Entitled Zone	Prior Entitled Zone
Opticians and optometrists shops. Structure < 10,000 sq. ft.	CO, C-1, C-2, C-3, M-1, PO	C-2, C-3, M-1
Paint and wallpaper stores. Structure < 10,000 sq. ft.	C-1, C-2, C-3, M-1	C-2, C-3, M-1
Pet shops. Structure < 10,000 sq. ft.	CO, C-1, C-2, C-3, M-1	C-2, C-3, M-1
Photo processing pick-up and delivery outlets. Structure < 10,000 sq. ft.	CO, C-1, C-2, C-3, M-1	C-1, C-2, C-3, M-1
Photographic and blueprint processing and printing. Structure < 10,000 sq. ft.	CO, C-1, C-2, C-3, M-1	C-3, M-1
Photographic developing and printing. Structure < 10,000 sq. ft.	CO, C-1, C-2, C-3, M-1	C-3, M-1
Photographic supply stores. Structure < 10,000 sq. ft.	CO, C-1, C-2, C-3, M-1	C-2, C-3, M-1
Picture framing shops. Structure < 10,000 sq. ft.	CO, C-1, C-2, C-3, M-1	C-2, C-3, M-1
Plumbing fixtures for retail sales. Structure < 10,000 sq. ft.	CO, C-1, C-2, C-3, M-1	C-2, C-3, M-1
Plumbing shops. Structure < 10,000 sq. ft.	C-2, C-3, M-1	C-3, M-1
Police station.	O, CO, C-1, C-2, C-3, M-1, M-2	
Post Office.	CO, C-1, C-2, C-3, M-1, R-1, R-2, R-3, PO	O, C-1, C-2, C-3, M-1
Pressing establishments. Structure < 10,000 sq. ft.	C-2, C-3, M-1	C-3, M-1
Zoning District Uses	New Entitled Zone	Prior Entitled Zone
Printing, lithography, engraving. Structure < 10,000 sq. ft.	CO, C-1, C-2, C-3, M-1	C-2, C-3, M-1
Private club, fraternity, sorority and lodge. Structure < 10,000 sq. ft.	CO, C-1, C-2, C-3, M-1	
Private greenhouses and horticultural collections. Structure < 10,000 sq. ft.	CO, C-1, C-2, C-3, M-1, R-1, R-2, R-3, R-A	R-1, R-2 R-3, C-1, C-2, C-3, M-1
Public library.	CO, C-1, C-2, C-3, M-1, R-1, R-2, R-3, R-A	R-3, C-1, C-2, C-3, M-1
Public Park or playground.	O, MR, CO, C-1, C-2, C-3, M-1, M-2 R-1, R-2, R-3, R-A, AP	
Public utility structure.	CO, C-1, C-2, C-3, M-1, MR, RO, R-1, R-2, R-3, R-A, PO, O, AP	
Radio and television broadcasting studios. Structure < 10,000 sq. ft.	C-2, C-3, M-1	C-3, M-1
Radio and television repair shops. Structure < 10,000 sq. ft.	C-2, C-3, M-1	C-3, M-1
Radio, microwave and television towers (Over 75 feet or within 2 miles of an airport).	C-2, C-3, M-1, M-2	

MONSON HAMLET PLAN

Real Estate Offices. Structure < 10,000 sq. ft.	CO, C-1, C-2, C-3, M-1, R-1, R-2, R-3, R-A	
Recreation center. Structure < 10,000 sq. ft.	CO, C-1, C-2, C-3, M-1	
Repairing and altering of wearing apparel. Structure < 10,000 sq. ft.	CO, C-1, C-2, C-3, M-1	C-1, C-2, C-3, M-1
Resort Structure. < 10,000 sq. ft.	CO, C-1, C-2, C-3, M-1	
Zoning District Uses	New Entitled Zone	Prior Entitled Zone
Restaurant. Structure < 10,000 sq. ft.	CO, C-1, C-2, C-3, M-1	
Restaurant, tea room or cafe. Structure < 10,000 sq. ft.	CO, C-1, C-2, C-3, M-1, R-1, R-2, R-3, R-A	C-1, C-2, C-3, M-1
Retail office equipment sales. Structure < 10,000 sq. ft.	CO, C-1, C-2, C-3, M-1	C-2, C-3, M-1
Retail sales of sporting goods, boats, boat motors, boat trailers, trailer coaches and their repair, rental and storage. Structure < 10,000 sq. ft.	O, CO, C-1, C-2, C-3, M-1	
Retail stores and offices incidental to and located on the site of a hotel, motel, resort, restaurant or guest ranch. Structure < 10,000 sq. ft.	O, CO, C-1, C-2, C-3, M-1	
Rug and carpet cleaning and dyeing. Structure < 10,000 sq. ft.	CO, C-1, C-2, C-3, M-1	C-3, M-1
Satellite antenna sales. Structure < 10,000 sq. ft.	CO, C-1, C-2, C-3, M-1	C-2, C-3, M-1
Satellite television antennas.	CO, C-1, C-2, C-3, M-1	
School, private.	CO, C-1, C-2, C-3, M-1, PO	
School, public.	CO, C-1, C-2, C-3, M-1, PO	
Scientific instrument stores. Structure < 10,000 sq. ft.	CO, C-1, C-2, C-3, M-1	C-2, C-3, M-1
Secondhand stores, pawn shops and thrift shops. Structure < 10,000 sq. ft.	CO, C-1, C-2, C-3, M-1	C-2, C-3, M-1
Shoe repair shop. Structure < 10,000 sq. ft.	CO, C-1, C-2, C-3, M-1	C-1, C-2, C-3, M-1
Zoning District Uses	New Entitled Zone	Prior Entitled Zone
Shoe store. Structure < 10,000 sq. ft.	CO, C-1, C-2, C-3, M-1	C-1, C-2, C-3, M-1
Sign painting shops. Structure < 10,000 sq. ft.	C-2, C-3, M-1	C-3, M-1
Small appliance sales and service. Structure < 10,000 sq. ft.	CO, C-1, C-2, C-3, M-1	C-1, C-2, C-3, M-1
Soda fountains. Structure < 10,000 sq. ft.	CO, C-1, C-2, C-3, M-1	C-2, C-3, M-1
Sporting goods store. Structure < 10,000 sq. ft.	CO, C-1, C-2, C-3, M-1	C-1, C-2, C-3, M-1
Stamp and coin stores. Structure < 10,000 sq. ft.	CO, C-1, C-2, C-3, M-1	C-2, C-3, M-1
Storage of petroleum products for use on the premises.	CO, C-1, C-2, C-3, M-1	
Studios (except motion picture). Structure < 10,000 sq. ft.	CO, C-1, C-2, C-3, M-1	C-2, C-3, M-1
Tinsmith Structure < 10,000 sq. ft.	C-2, C-3, M-1	C-2, C-3, M-1
Tire sales (no retreading or recapping). Structure < 10,000 sq. ft.	C-2, C-3	C-2, C-3, M-1
Tobacco and cigar stores. Structure < 10,000 sq. ft.	CO, C-1, C-2, C-3, M-1	C-2, C-3, M-1

MONSON HAMLET PLAN

Tourist Court. Structure < 10,000 sq. ft.	CO, C-1, C-2, C-3, M-1	
Toy store. Structure < 10,000 sq. ft.	CO, C-1, C-2, C-3, M-1	C-2, C-3, M-1
Zoning District Uses	New Entitled Zone	Prior Entitled Zone
Trailer and recreation vehicle sales, service and rentals. Structure < 10,000 sq. ft.	C-2, C-3, M-1, M-2, AP	C-3, M-1
Travel agencies. Structure < 10,000 sq. ft.	CO, C-1, C-2, C-3, M-1	C-2, C-3, M-1
Variety store. Structure < 10,000 sq. ft.	CO, C-1, C-2, C-3, M-1	C-2, C-3, M-1
Video machine and tape sales/rental. Structure < 10,000 sq. ft.	CO, C-1, C-2, C-3, M-1	C-1, C-2, C-3, M-1
Warehouses except for the storage of fuel or flammable liquids and explosives. Structure < 10,000 sq. ft.	CO, C-1, C-2, C-3, M-1	C-3, M-1
Watch and clock repair shop. Structure < 10,000 sq. ft.	CO, C-1, C-2, C-3, M-1	C-2, C-3, M-1
Wedding chapel. Structure < 10,000 sq. ft.	CO, C-1, C-2, C-3, M-1	C-2, C-3, M-1

MONSON HAMLET PLAN

A-2 *Mixed Use Overlay District (Zone Change Text)*

The following regulations shall apply in the community of Monson, unless otherwise provided in this Ordinance.

PURPOSE **A.** The purpose of this zone is to allow for mixed uses. Allowing a mix of uses promotes flexibility in the types of entitlements that can be issued. Economic Development can be pursued with a wide variety of development potential. In addition, mixed use can allow for decreased vehicles miles traveled if residential uses are mixed with uses for employment.

APPLICATION **B.** This overlay zone only applies to the community of Monson.

USE **C.** No building or land shall be used and no building shall be hereafter erected or structurally altered, except for one or more of the following uses allowed in this this overlay zone are outlined in the community plan for Monson.

Within the Mixed Use Zoning District, all uses outlined in the M-1, C-3, C-2, C-1, R-1, R-2 and R-3 uses are allowed. Uses and activities that are found by the Planning Director to be similar to and compatible with those specific zoning districts are also allowed. In addition, use and activities determined to be compatible by the Planning Commission and the Board of Supervisors with the above mentioned zoning districts are also allowed.

All conditional uses allowed in these zoning districts shall also be allowed by right with exception of the following combination of uses: All uses shall not be detrimental to the health, safety, peace, morals, comfort, and general welfare of persons residing or working in the neighborhood, or to the general welfare of the county. All uses shall limit impacts related to smoke, fumes, dust,

Uses/Combination of Uses reviewed by Planning Commission
Auto wrecking and Residential
Battery Manufacture and Residential or Commercial
Biomass Fuel Production and Residential
Flammable Liquids over 10,000 gallons
Hazardous Waste Facility
Planning Mills and Residential or Commercial
Sand blasting
Slaughterhouse and Residential
Solid Waste Recycling and Residential
Super service stations and Residential
Airport
Heliport

MONSON HAMLET PLAN

All uses shall not be detrimental to the health, safety, peace, morals, comfort, and general welfare of persons residing or working in the neighborhood, or to the general welfare of the county. All uses shall limit impacts related to smoke, fumes, dust, gas, noise, odor, vibrations and other hazards to be considered an allowed use without the need for a special use permit. All allowed uses are subject to the determination of appropriateness by the Director of Planning.

The Director of Planning has the option of deferring any land use application allowed in this district to the Planning Commission for review and decision.

DEVELOPMENT

1. Height: No building or structure hereafter erected or structurally altered shall exceed six (6) stories or seventy five (75) feet to uppermost part of roof.
2. Front Yard: 0 Feet
3. Side Yard: Where a lot abuts upon the side of a lot in any "R" Zone (R-A, R-O, R-1, R-2 and R-3), there shall be a side yard of not less than five (5) feet. Where a reversed corner lot rears upon a lot in any "R" Zone, the side yard on the street side of the reversed corner lot shall be not less than fifty (50) percent of the front yard required on the lots in the rear of such corner lot. In all other cases, a side yard for a commercial building shall not be required.
4. Rear Yard: Where a lot abuts upon the rear of a lot in any "R" Zone (R-A, R-O, R-1, R-2 and R-3), there shall be a rear yard of not less than fifteen (15) feet. In all other cases, a rear yard for a commercial building shall not be required.
5. Lot Area: The minimum lot area shall be ten thousand (10,000) square feet; provided, however, that where a lot has less area than herein required and was of record at the time this paragraph became effective, said lot may be occupied by not more than one (1) main building subject to the provisions of this Section.
6. Floor Area Ratio: The maximum Floor Area Ratio is 2. The Floor Area Ratio is the amount of square feet of all structure allowed on a parcel based on parcel size.
7. Distance between structures: The minimum distance between structures is 10 feet.
8. Parking: Off-street parking and loading shall be required in conformance with Section 15.
9. Fences, Walls, and Screening: Where the side or rear lot line of a site adjoins or is located across an alley from any "R" Zone (R-A, R-O, R-1, R-2, and R-3), there shall be a solid wall, fence or equivalent landscaping screening at least six (6) feet in height located along the common lot line, except in the required front or side yard. Open storage of materials and equipment shall be permitted only within an area surrounded and screened by a solid wall or fence or compact evergreen hedge (with solid gates where necessary), not less than six (6) feet

MONSON HAMLET PLAN

in height, provided that no materials shall be stored to a height greater than that of the wall, fence, or hedge. Fulfillment of the requirement of this paragraph shall not be required for buildings and uses which were established in accordance with all applicable buildings and zoning regulations and which were existing in a commercial or manufacturing zone on the effective date of this paragraph, until such time as a permit or other grant of approval for expansion, alteration or development of property is approved by Tulare County.

All other Development Standards are outlined in the Community Plan for Monson. Conformance to development standards is required for all development; however, the Planning Director, Planning Commission, or Board of Supervisors may provide exemptions to particular development standards when deemed appropriate.

MONSON HAMLET PLAN

A-3 Development Standards (Mixed Use Zoning District)

To promote Economic Development within the Monson Urban Development Boundary, a Mixed Use Overlay zoning district is being established to allow for flexibility in the allowed uses within Monson. In addition, the use permit restriction is updated to allow for ministerial approval [by the Planning Director]. Development standards are established to ensure high quality development within this mixed use overlay district. To promote Economic Development within the Monson Urban Development Boundary, a Mixed Use Overlay zoning district is being established to allow for flexibility in the allowed uses within Monson. In addition, the use permit restriction is updated to allow for ministerial approval [by the Planning Director]. Development standards are established to ensure high quality development within this mixed use overlay district.

ARCHITECTURE

A-1 Entries to buildings should be individualized and clearly identifiable.

A-2 Retail spaces should be accessed directly from the sidewalk, rather than through lobbies or other internal spaces.

A-3 Entrances to upper story uses should not be as prominent as the primary entrances to first story uses.

A-4 The height of first floor commercial should have a minimum ceiling height of 12 feet.

A-5 Architecturally distinguish the ground floor from the upper façade, to form a visual base for the building. Create an intimate scale for the pedestrian environment.

A-6 Each building should have a defined base, body, and cap segment

A-7 Blank walls on ground floor facades adjacent to public sidewalks, public right-of-ways, and public spaces are prohibited.

A-8 Ground floor window openings should range between fifty (50) to eighty (80) percent of the ground floor façade adjacent to sidewalks and private and public plazas, patios, and courtyards. These window openings should consist of transparent “storefront” windows. Second story windows should not exceed fifty (50) percent of the total exterior wall surface.

A-9 Three-dimensional cornice lines, parapet walls, and/or overhanging eaves should be used to enhance the architectural character of the building.

A-10 Wall surfaces should not exceed 250 square feet without including some form of articulation. Acceptable forms of articulation include use of windows, varied reveal patterns, change in material, texture, color, or detail; and a change in wall plane location or direction.

A-11 Openings in the façade should be accentuated with paint, tile, shutters, awnings, planters, and/or other appropriate architectural features in order to create varied shadows and a rich visual texture.

MONSON HAMLET PLAN

A-12 Articulation and detailing of the exterior walls at the ground level, should be integrated with landscape features (trees, plants, walls, trellises, and unique land forms) to ensure an appropriate transition from ground to wall plane.

A-13 An equal level of architectural detail and landscaping should be incorporated into all sides of freestanding buildings, because they are generally visible from all sides.

A-14 Architectural details should be fully integrated into the design of the building to avoid the appearance of afterthought elements or elements that are “tacked on” to a building.

A-15 Finish materials that give a feeling of permanence and quality should be used at ground level facades.

A-16 A consistent use of window style, size, trims, and accents should be used to ensure a consistent character along the building façade.

A-17 Exposed structural elements (beams, trusses, frames, rafters, etc.) are acceptable when appropriately designed to complement the over design of the façade.

A-18 Tilt-up buildings should incorporate decorative trim, recessed/projecting panels, recessed windows/doors, accent materials, and varied roof height to increase visual interest.

A-19 New buildings located at the corner of the block may be more massive in scale than adjacent buildings to better define the street intersection.

A-20 Corner buildings should have a strong relationship to the corner of the intersection by incorporating a unique architectural element or detail at the corner; such as a tower or primary building entrance.

A-21 Corner buildings should present equally important facades of similar appearance on both streets.

A-22 Articulate side and rear facades in a manner compatible with the design of the front façade. Avoid large blank wall surfaces on side and rear facades which are visible from public areas. In these locations, display windows, store entrances, and upper windows are encouraged. When this is not feasible, consider the use of ornament, murals, or landscaping along large blank walls.

A-23 Remove alterations whose design and/or materials are not consistent with the overall character of the building.

A-24 Where off-street parking or an alley is provided behind a building, a secondary entrance to both first floor and upper floor uses should be provided at the rear of the building.

A-25 Locate and design required vents and access doors to minimize their visibility from public spaces.

A-26 Use high quality detailing for new buildings and replacement elements. For example, new or replacement windows should have sash and frame thicknesses and window depths which are similar to those of original or historic windows. Such level of detailing provides an interplay between light and shadow which adds interest and visual depth to the façade.

A-27 Loading docks, storage areas, and service facilities should be located at the rear of the building and screened from the street as necessary.

A-28 Conceal all electrical boxes and conduits from view, and position light sources to prevent glare for pedestrians and vehicles.

MONSON HAMLET PLAN

ROOFS AND AWNINGS

RA-1 Awnings should be compatible with other awnings nearby, particularly those on the same building, when these awnings complement the architectural character of the building.

RA-2 Canopies and awnings should be compatible with the style and character of the structure on which they are located.

RA-3 Use matte canvas fabric for awnings; not vinyl, fiberglass, plastic, wood or other unsuitable materials. Glass and metal awnings may be appropriate for some buildings, but must be consistent with the architectural style of the building.

RA-4 Include architectural features such as awnings, canopies, and recessed entries that can protect pedestrians from inclement weather. Design these features as integral parts of the building.

RA-5 Awnings and canopies should not hang below the top of the first floor storefront window. In addition, awnings and canopies should be at least ten (10) feet above the sidewalk.

RA-6 Canopies and awnings should not project more than seven (7) feet from the surface of the building.

RA-7 Awnings and canopies that project into the public right-of-way should not impede pedestrian or vehicular movement.

RA-8 Roof forms, lines, masses, and materials should be continuous and consistent with the overall style, character, scale, and balance of the building.

RA-9 Roof overhangs and exposed structural elements should be designed to be consistent with the overall style and character of the building.

RA-10 Roof mounted HVAC equipment, ducts, vents, and other equipment should be screened from public view.

RA-11 Mansard roofs are prohibited.

RA-12 All flat roofs should have 90% of the roof area covered by solar panels. All sloped roofs should have 50% of the roof area covered by solar panels. Roofs should be painted or colored with a bright white (or similar color) with a reflective glossy finish.

SITE PLANNING

SP-1 Place entrances to storefronts and other ground floor uses so that they are accessible directly from the public sidewalk, not internal lobbies.

SP-2 On corner sites, a prominent streetscape presence should be established and visual interest should be created by either locating buildings near the intersection to enliven the streetscape or using landscaping to frame the intersection. Parking areas immediately adjacent to intersections are discouraged.

SP-3 Structures and site improvements should be located and designed to avoid conflict with adjacent uses.

SP-4 Gates to parking areas should be designed with materials and color that are compatible with the site.

SP-5 Multi-story buildings that overlook private or common area open space of adjacent residences should be designed to protect privacy of these spaces.

MONSON HAMLET PLAN

SP-6 Gates to parking areas should be located to prevent vehicle stacking or queuing on the street.

SP-7 Primary site and building entry points are strongly encouraged to generate visual interest with special design features such as decorative or textured paving, flowering accents, special lighting, monuments, walls, shrubs, water features, and the use of sizeable specimen trees.

SP-8 To the extent feasible and practicable, parcels should share access driveways to minimize curb cuts and traffic congestion.

SP-9 Cul-de-sacs are inappropriate except when a freeway, railroad, or canal prevents connectivity.

SP-10 Block lengths should be short, averaging 200 to 300 feet. Maximum block length is be 500 feet.

LANDSCAPING

LA-1 Projects should provide, and maintain, landscaped buffers between commercial uses and low-density residential uses, between industrial and residential uses, and between commercial and industrial uses. Plant material will be placed in a manner to suggest natural growth as opposed to a rigid barrier.

LA-2 A predominance of deciduous tree species is encouraged to shade western, southern, and southwestern exposures.

LA-3 The parking lot should not be the dominant visual element of the site as viewed from the street. Locate or place parking lots at the side and rear of buildings or use parking lot screening to soften their appearance.

Screen parking lots: Utilize a hedge (recommended height of 36 inches) with a rolling berm to screen parking at the street periphery (Minimum shrub container size should be 5 gallons.)

LA-4 Project sites should be designed so that areas used for outdoor storage, and other potentially unsightly areas are screened from public view. All service yards and outdoor storage areas should be enclosed or screened from view.

LA-5 Loading areas, access and circulation driveways, trash, and storage areas, and rooftop equipment should be adequately screened from the street and adjacent properties, as deemed necessary. To the fullest extent possible, loading areas and vehicle access doors should not be visible from public streets.

LA-6 Loading driveways should not back onto streets or encroach into landscaped setback areas.

LA-7 Loading doors should be integrated into building elevations and given the same architectural treatment where feasible.

LA-8 Utility equipment such as electric and gas meters, electrical panels, and junction boxes should be screened from view or incorporated into the architecture of the building.

LA-9 Utility devices, such as transformers and backflow preventers, should not dominate the front landscape area.

LA-10 All utility lines from the service drop to the site should be located underground.

MONSON HAMLET PLAN

LA-11 When security fencing is required, it should be a combination of solid walls with pillars and offsets, or short solid wall segments and segments with metal fencing. Chain-link fencing is strongly discouraged when facing public view and should only be used as interior fencing.

LA-12 Retaining walls at retention basins should utilize a stepped or terraced motif as a visual tool to maintain appropriate human scale.

LA-13 Retention basins visible to public view and common open spaces should be contoured and landscaped in a creative manner to minimize a harsh utilitarian appearance. When feasible, it is recommended to beneficially use the run-off storm water as supplemental watering for the landscape plants.

LA-14 Parking lot run-off should be routed through turf or other landscaping.

LA-15 Parking lots located adjacent to the sidewalks or right-of-ways should be screened to a height of thirty six (36) inches above the grade with landscaping and/or low high quality fencing.

REFUSE AND STORAGE AREAS

R-1 Trash storage must be enclosed within or adjacent to the main structure or located within separate freestanding enclosures.

R-2 Trash enclosures should be unobtrusive and conveniently accessible for trash collection but should not impede circulation during loading operations.

R-3 Trash enclosures should be located away from residential uses to minimize nuisance to adjacent properties.

R-4 Trash and storage enclosures should be architecturally compatible with the project design. Landscaping should be incorporated into the design of trash enclosures to screen them and deter graffiti.

LIGHTING

LI-1 Provide lighting at building entrances and for security at ground level.

LI-2 Lights should be shielded and point down toward the ground.

LI-3 Parking lot should have uniformly spaced night lighting.

LI-4 Well-lit sidewalks and/or pedestrian walkways should be located to provide safe access from the parking lot to the street sidewalk.

LI-5 Exterior architectural lighting should fully compliment a building's design and character. Light fixtures should work in conjunction (size, scale, and color) with the building's wall, roof.

LI-6 Street lighting features should be "pedestrian scale" at twelve (12) to eighteen (18) feet in height above the curb.

WALLS AND FENCES

WF-1 Wall/fence design should complement the project's architecture. Landscaping should be used to soften the appearance of wall surfaces.

WF-2 Walls and fences within front and exterior side yards of commercial sites should be avoided.

WF-3 Unless walls are required for screening or security purposes they should be avoided.

MONSON HAMLET PLAN

WF-4 Security fencing should incorporate solid pilasters, or short solid wall segments and view fencing.

WF-5 Front yard fences should not abut the sidewalk. The fence should be set back from the sidewalk at least 2 to 3 feet to allow room for landscape materials to soften the fence and to ensure pedestrian comfort.

WF-6 Walls and fences should be designed in such a manner as to create an attractive appearance to the street and to complement the architecture of the industrial park.

WF-7 Gates should be provided in walls or fences where necessary to allow emergency access.

WF-8 High perimeter walls and walls topped with barbed wire, razor wire, or broken glass are strongly discouraged.

WF-9 Inordinately long walls or fences should be broken up by landscaping, pilasters, offsets in the alignment of the wall or fence, and/or changes in materials and colors.

WF-10 Chain link fences should not be visible from streets.

WF-11 Long expanses of fence or wall surfaces should be offset and architecturally designed to prevent monotony. Landscape pockets (12-feet wide by 3- feet deep) should be provided at 70-foot minimum intervals along the wall.

STREETSCAPE

ST-1 A consistent pavement material of varied texture and color should be applied to all crosswalks to clearly define pedestrian crossings, to slow down traffic.

ST-2 Sidewalks widths, excluding curbs, should be a minimum of five (5) feet.

ST-3 Curb and gutters should be constructed with all new development.

ST-4 A planting strip, or tree lawn, 3 to 5 feet wide should be located between the sidewalk and the curb of the street. Existing tree lawns should be preserved.

ST-5 New street trees should be planted on the curb edge of the sidewalk in front of all new development projects.

SIGNAGE

SI-1 Sign letter and materials should be professionally designed and fabricated.

SI-2 Each storefront with a ground floor entrance should be allowed two signs that should be attached to the building.

SI-3 All electrical conduits should be concealed from public view.

SI-4 For commercial uses, the primary wall sign should be in the space above a storefront and visibly oriented towards the street.

SI-5 For commercial uses, a secondary sign should be smaller than the primary sign and be oriented towards passing pedestrians. It should extend out perpendicular to the building façade and be mounted or hung from the wall beneath an awning or above a first floor window. The bottom of the wall-mounted sign should be located at least eight (8) feet above the sidewalk. The outer face of the sign should not extend more than four (4) feet from the edge of the building surface, and the maximum area of the sign should have no more than six (6) square feet.

MONSON HAMLET PLAN

SI-6 Signs should be designed to be compatible with building design in terms of relative scale, overall size, materials, and colors. No sign should dominate the façade. Signage elements should incorporate materials colors, and shapes that appropriately reflect and compliment the building's architecture.

SI-7 Large signs that dominate a building façade or the streetscape should not be permitted.

SI-8 Signage should be constructed of high quality, low maintenance, and long lasting materials. Except for banners, flags, temporary signs, and window signs, all signs should be constructed of permanent materials and should be permanently attached to the ground, a building or another structure by direct attachment to a rigid wall, frame, or structure.

SI-9 No more than twenty (20) percent of window area should be obstructed by signs, posters, advertisements, painted signs, and/or merchandise, and the top one half of the window should be permanently clear and free of obstructions. Awning signage should be of a replaceable-type to accommodate tenant turnover.

SI-10 Wall, canopy, under-canopy, and marquee signs should not exceed three-fourths (3/4) square foot of aggregated display area per lineal foot of frontage.

SI-11 Awning sign should be mounted on the hanging border of the awning and should not protrude beyond the awning surface.

SI-12 Wall signs or advertisements should not project more than twelve (12) inches from the wall face to which they are mounted, should not project beyond building eaves, and should be mounted flat throughout their length and height.

SI-13 Signs for individual tenants within a multiple-tenant, such as offices located above the ground floor, should be grouped together and appropriately scaled to a pedestrian-oriented retail environment.

SI-14 Fin signs or under marquee sign are permitted provided that they are installed with a minimum of eight (8) feet clearance from the lowest point on the sign and support to the top of the walking surface below it.

SI-15 Awning signs and face-mounted signs are permitted provided that the sign should have no more than one line of text and that maximum text height is twelve (12) inches.

SI-16 No signs should be erected in any manner in which the sign, in whole or in part, would create a hazardous condition to pedestrian or automobile traffic alike.

SI-17 Additional business signs should be permitted on windows and on the vertical face of awning valances provided that the signs are permanent in nature and of high quality.

SI-18 The following signs are strictly prohibited:

- Roof signs, signs located above the roof or parapet lines.
- Permanent banner signs.
- Posters.
- Painted window advertisements.
- Billboards
- Large auto-oriented pole-mounted or "lollipop signs."
- Moving signs and flashing signs.

SI-19 Signs advertising an activity, business product, or service no longer conducted on the premises, and/or signs frames, structural members, or supporting poles remaining unused for a period of six (6) months should be removed from the site or building by the property owner.

MONSON HAMLET PLAN

SI-20 Address markers should be easily identifiable and readable from the street.

SI-21 Freestanding, ground-mounted and monument signs should be not less than one (1) foot behind a property line or designated right-of-way for vehicular and pedestrian traffic, but in no case should be more than ten (10) feet behind a sidewalk and ten (10) feet from any vehicular entrance or driveway. These signs should not interfere with the safety of vehicular traffic entering or exiting the premises.

SI-22 The maximum height of monument signs should be five (5) feet above the top of concrete curb.

SI-23 One freestanding or monument sign with a maximum of thirty-two (32) square feet of display area should be allowed on each street frontage of more than fifty (50) feet. Where two (2) or more freestanding or monument signs are allowed on a single street frontage, one freestanding or monument sign with a maximum of fifty (50) square feet of display area may be used in lieu of several signs on the same frontage.

SI-24 All gateway signs should have a consistent character and style.

SI-25 A hierarchy of gateway signs should be established to differentiate between major and minor gateway entrances.

SI-26 Major gateway signs should be designed as visually prominent towers, monuments, or street spanning arches.

SI-27 Minor gateway signs should be visible to automobile traffic, but also be low enough to be visible to pedestrian traffic.

SERVICE STATIONS AND CAR WASHES

SS-1 Service and carwash bays should not face residential properties or the public street. The visibility of service bays and carwash opening should be minimized.

SS-2 Gas pump canopies should be ancillary to the main building structure. The retail market/office building segment of the facility should be oriented along the street frontage, whenever possible.

SS-3 All structures on the site (including kiosks, carwash buildings, gas pump columns, etc.) should be architecturally consistent and related to an overall architectural theme.

SS-4 Canopy light fixtures should be recessed into the canopy.

SS-5 Outdoor equipment, such as vent risers and clean air separators, should be screened either with an enclosure or if site configuration topography permits, away from street view, screened with landscaping or located at a grade differential.

SS-6 Site-specific architectural design contextual to surroundings is strongly encouraged. Designs based solely on corporate or franchise models are strongly discouraged.

AUTO REPAIR SERVICES

AR-1 Building design should be stylistically consistent, and compatible with surrounding buildings through use of similar scale, materials, colors, and/or detailing.

AR-2 Building materials should have the appearance of substance and permanency; lightweight metal or other temporary appearing structures are discouraged.

MONSON HAMLET PLAN

AR-3 Vehicle drop-off areas should be provided to prevent vehicle overflow to adjacent streets.

CONTRACTOR, BUILDING SUPPLY, OR LANDSCAPING YARDS

BS-1 The main office or building should be located along the street frontage to screen outdoor sales and minimize the visibility of storage of materials and vehicles.

BS-2 Customer parking should be provided close to the building and not interspersed in the yard.

BS-3 All outdoor contractor vehicle storage areas should be enclosed with a screen of sufficient height and constructed with durable and high-quality materials that are compatible with the building and site.

CONSUMER STORAGE FACILITIES

SF-1 The administrative office should be located in a building or building element that is human scale and located in proximity to the street.

SF-2 Parking for visitors should be located near the administrative office, outside of any gated portion of the facility.

SF-3 A storage facility should be consistent with its surrounding area in scale and appearance, through the use of building size transitions, architecture, and landscaping.

SF-4 Loading doors for individual storage units should not face outward toward streets.

SF-5 In order to break up the mass of larger buildings which containing storage units, provide horizontal and vertical articulation through the use of building offsets, windows, and variations in colors and materials.

SF-6 Any area intended for the storage of automobiles and recreational vehicles should be located towards the rear of the site or screened with an enclosure of adequate height

SPECIAL CONDITIONS

SC-1 The project should emit no smoke or should reduce the amount of smoke from an existing use.

SC-2 The project should emit no fumes or should reduce the amount of fumes from an existing use.

SC-3 The project should implement dust control measures sufficient to minimize or prevent dust emissions. Measures should be consistent with, or more effective than, those required by the Valley Air District.

SC-4 The project should emit no odors or should reduce the amount of odors from an existing use.

SC-5 The project should not create noticeable vibrations.

MONSON HAMLET PLAN

APPENDICES

Appendix A: Planning Commission Resolutions

Appendix B: Board of Supervisors Resolution

Appendix A – Planning Commission Resolutions

Addendum Environmental Impact Report and MMRP-Resolution No. 9366

General Plan Amendment GPA 17-035-Resolution No. 9367

Section 18.9 Zoning Ordinance (Mixed Use)-Resolution No. 9368

Section 16 Zoning Ordinance (By Right Uses)-Resolution No. 9369

Zoning District Map-Resolution No. 9370

BEFORE THE PLANNING COMMISSION

COUNTY OF TULARE, STATE OF CALIFORNIA

IN THE MATTER OF THE ADDENDUM EIR)
AND MITIGATION MONITORING AND REPORTING)
PROGRAM FOR THE HAMLET PLANS 2017) RESOLUTION NO. 9366
UPDATE AND PROPOSED CHANGES TO THE)
LAND USE MAPS AND ZONING CHANGES)
THAT ARE NECESSARY FOR CONSISTENCY WITH)
THE GENERAL PLAN PARTS I, AND PART III)
AMENDMENTS (GPA 17-035))

Resolution of the Tulare County Planning Commission recommending to the Board of Supervisors adoption of the Addendum to the (2012) Tulare County 2030 General Plan Final Environmental Impact Report for the Hamlet Plans 2017 Update set forth in attached Exhibit "A" and Mitigation Monitoring and Reporting Program (MMRP) set forth in Exhibit "B" for the entire Hamlet Plans 2017 Update which consists of General Plan Amendment No. GPA 17-035 amendment to Part I General Plan Amendment to the Planning Framework, Land Use, Environmental Resources Management (Open Space), and Transportation and Circulation, and Part III amending the Tulare County General Plan to adopt Hamlet Plans and Hamlet Development Boundaries, (Allensworth General Plan Amendment No. GPA 17-014, Delft Colony General Plan Amendment No. GPA 17-015, East Tulare Villa General Plan Amendment No. GPA 17-016, Lindcove General Plan Amendment No. GPA 17-017, Monson General Plan Amendment No. GPA 17-018, Seville General Plan Amendment No. GPA 17-019, Teviston General Plan Amendment No. GPA 17-020, Tonyville General Plan Amendment No. GPA 17-021, Waukena General Plan Amendment No. GPA 17-022, West Goshen General Plan Amendment No. GPA 17-023, Yettem General Plan Amendment No. GPA 17-024), Change of Zones (Allensworth Change of Zone No. PZC 17-037 (Zoning District Map), Delft Colony Change of Zone No. PZC 17-015 (Zoning District Map), East Tulare Villa Change of Zone No. PZC 17-016 (Zoning District Map), Lindcove Change of Zone No. PZC 17-017 (Zoning District Map), Monson Change of Zone No. PZC 17-018 (Zoning District Map), Seville Change of Zone No. PZC 17-019 (Zoning District Map), Teviston Change of Zone No. PZC 17-020 (Zoning District Map), Tonyville Change of Zone No. PZC 17-021 (Zoning District Map), Waukena Change of Zone No. PZC 17-022 (Zoning District Map), West Goshen Change of Zone No. PZC 17-023 (Zoning District Map, Yettem Change of Zone No. PZC 17-024 (Zoning District Map), for an amendment PZC 17-039 to Section 16 of Ordinance No. 352, to allow additional by-right uses within the Allensworth, Delft Colony, East Tulare Villa, Lindcove, Monson, Seville, Teviston, Tonyville, Waukena, West Goshen, and Yettem Hamlet Development Boundary, and Zone Ordinance Amendment No. PZC 17-038 establishing a Mixed Use Combining Zone in Allensworth, Delft Colony, East Tulare Villa, Lindcove, Monson, Seville, Teviston, Tonyville, Waukena, West Goshen, and Yettem (incorporated by reference herein). The unincorporated Hamlet Communities are located within the Mount Diablo Base & Meridian as follows: Allensworth, Sections, 4, 5, 8, 9, 15, & 16, Township 24S, Range 25E, Delft Colony, Sections 22, 23, 26, & 27 Township 16S, Range 23E, East Tulare Villa, Sections 8, & 9, Township 20S, Range 25E, Lindcove, Section 17, Township 18S, Range 27E, Monson Sections 34, & 35, Township 16 south, Range 24 East. Seville, Sections 1, 2 & 35, Township 17S, Range 25E,

Teviston, Sections 8, 9, 16, 17, 21, & 22, Township 23S, Range 25E, Tonyville, Section 30, Township 23S, Range 25E, Waukena, Sections 5, 31, & 32 Township 21S, Range 23E, West Goshen Sections 22 & 23, Township 18 south, Range 23 East, Yettem, Sections 3, 4, 33, & 34 Townships, 16S & 17S Range 25E; and,

WHEREAS, the Tulare County Board of Supervisors, on April 4, 2017, approved General Plan Initiation (GPI 17-001) which initiated the action to amend the Tulare County General Plan pursuant to Title 7, Chapter 3, Articles 5 and 6 of the Government Code of the State of California; and,

WHEREAS, the General Plan Amendment will accomplish the following: (1) update the Planning Framework Element, Land Use Element, Environmental Resources Management Element (Open Space), and Transportation & Circulation Element; (2) add Allensworth, Delft Colony, East Tulare Villa, Lindcove, Monson, Seville, Teviston, Tonyville, Waukena, West Goshen, and Yettem to the Mixed-Use Combining Zone; (3) allow additional by-right uses within the aforementioned Hamlet Communities; and (4) rezoning of properties consistent with the Land Use Element, as amended; and,

WHEREAS, The County prepared a Final EIR for the 2010 draft Tulare County General Plan 2030 Update (SCH #2006041162) and released the Final EIR for public review on or about August 30, 2011. The FEIR for the General Plan 2030 Update was prepared in compliance with the CEQA (Public Resources Code Section 21000 et seq. and the CEQA Guidelines (California Code of Regulations, Title 14). The Final EIR was distributed on CD to the State Clearinghouse, and all agencies who commented on the RDEIR. Individual notices of the FEIR availability were sent to agencies, organizations, and individuals who commented on the RDEIR. The Final EIR was available in all Tulare County Libraries, at the Tulare County Resource Management Agency and the following website, <http://generalplan.co.tulare.ca.us>; and,

WHEREAS, The Board of Supervisors has given notice of the proposed amendment to the General Plan as provided in Sections 65355, 65090, and 65091 of the Government Code of the State of California. A public notice was printed in the Dinuba Sentinel on August 23, 2012 the Visalia Times Delta, Porterville Recorder, and the Tulare Advance Register on August 17, 2012 at least ten days prior to the public hearing before the Board of Supervisors on August 28, 2012.; and,

WHEREAS, this Addendum EIR and MMRP is for the Hamlet Plans 2017 Update inclusive of: General Plan Amendment No. GPA 17-035 an amendment to the Planning Framework Element, Land Use Element, Environmental Resources Management (Open Space) and the Transportation and Circulation Element; Change of Zone No. PZC 17-038 an amendment to Section 18.9 the "MU" Mixed-Use Combining Zone; A Change of Zone for Allensworth Change of Zone No. PZC 17-037 (Zoning District Map), Delft Colony Change of Zone No. PZC 17-015 (Zoning District Map), East Tulare Villa Change of Zone No. PZC 17-016 (Zoning District Map), Lindcove Change of Zone No. PZC 17-017 (Zoning District Map), Monson Change of Zone No. PZC 17-018 (Zoning District Map), Seville Change of Zone No. PZC 17-019 (Zoning District Map), Teviston Change of Zone No. PZC 17-020 (Zoning District Map), Tonyville Change of Zone No. PZC 17-021 (Zoning District Map), Waukena Change of Zone No. PZC 17-022 (Zoning District Map), West Goshen Change of Zone No. PZC 17-023 (Zoning

District Map, Yettem Change of Zone No. PZC 17-024 (Zoning District Map) within the respective Hamlet Development Boundaries in conformance with the updated Land Use Element; Change of Zone No. PZC 17-039 an amendment to Section 16 to allow additional by-right uses in the Allensworth, Delft Colony, East Tulare Villa, Lindcove, Monson, Seville, Teviston, Tonyville, Waukena, West Goshen, and Yettem Hamlet Communities; and

WHEREAS, through a good faith and substantial analysis of environmental impacts from this Project in the Addendum EIR, staff found, and the Planning Commission agrees that a summary of impacts and potential mitigation measures is included in Table ES-4 of the RDEIR and contains: (1) environmental impacts; (2) mitigation measures; (3) significance before mitigation; and (4) significance after mitigation, and required additional mitigating policies and implementation measures are recommended for the following: (1) Land Use and Aesthetics; (2) Traffic and Circulation; (3) Energy and Global Climate Change; (4) Noise; (5) Geology, Soils, Seismicity, and Mineral Resources; (6) Hazardous Materials and Public Safety; (7) Public Services, Recreation Resource and Utilities; (8) Agricultural Resources; (9) Biological Resources; and (10) Cultural Resources; and; therefore, the Addendum EIR and MMRP were the appropriate level of environmental review under CEQA for this Project;

WHEREAS, the proposed Hamlet Plans 2017 Update is consistent with the Tulare County General Plan and includes the following primary goals and objectives:

1. Land Use and Environmental Planning - Promote Economic Development within planning areas in order to implement the following General Plan goals:
 - a. Ensure that the text and mapping of the Community Plan Designations and Zoning Reclassifications address various development matters such as encouraging Agricultural Adaptive Reuse activities, recognizing Non-Conforming Use activities, and facilitating Ministerial Permit approvals through an amendment of the Land Use Element to incorporate use designations contained in the proposed Hamlet Plans;
 - b. Encourage infill development within Hamlet Development Boundaries, thereby discouraging leapfrog development within Tulare County;
 - c. Reduce development pressure on agriculturally-designated lands within the Valley Floor, thereby encouraging agricultural production to flourish;
 - d. Reduce vehicle miles travelled throughout the County, thereby reducing greenhouse gas emissions and positively affecting air quality;
 - e. Amend the Transportation and Circulation Element and incorporate circulation plan designations in the Hamlet Plans. This will improve the community's circulation, transit and pedestrian transportation system by enabling the construction of key projects including Safe Routes to Schools, Complete Streets, and Bike Lanes/Pedestrian Paths; and
 - f. Promote Economic Development by reducing entitlement requirements and providing flexible land uses in a mixed use overlay zone, which will enable the County to adapt to current market conditions.
2. Improvements for a "disadvantaged community" - The Hamlet planning areas will be improved because of the following:
 - a. Faster project processing resulting in increased employment opportunities by the private sector, as proposed projects can be reviewed and approved expeditiously;

- b. Increased housing grant awards that are consistent with the policies of the recently adopted General Plan Update and Housing Element; and
 - c. Enhanced infrastructure grant awards providing access to funding to upgrade road, water, wastewater, and storm water facilities.
3. Strengthening Relationship with TCAG - An important benefit of this expedited community plan process is the opportunity for RMA to strengthen the County's relationship with the Tulare County Association of Governments (TCAG), as this Community Plan will help to facilitate the funding and implementation of several key transportation programs such as Safe Routes to Schools, Complete Streets, and Bike/Pedestrian Projects. By pursuing these transportation programs through a collaborative process, there is greater probability of getting projects in the ground faster, thereby making the community safer and healthier by providing a more efficient transportation network.

WHEREAS, on October 26, 2017 a Notice of Public Hearing by the Tulare County Planning Commission was duly published in the Visalia Times-Delta, a newspaper of general circulation in Tulare County, to consider the Hamlet Plans 2017 Update, and

WHEREAS, a Public Hearing was held and an opportunity for public testimony was provided at a regular meeting of the Planning Commission on November 8, 2017, and

WHEREAS, at the Tulare County Planning Commission meeting, a public hearing was held and public testimony was presented by two Allensworth residents and a representative from Leadership Council who supported the project was received and recorded, and

WHEREAS, the Planning Commission is the advisory body to the Board of Supervisors with respect to the Addendum EIR, MMRP and the Hamlet Plans 2017 Update; and

NOW, THEREFORE, BE IT RESOLVED as follows:

1. This Planning Commission hereby recommends adoption based on the substantial evidence in the record that the analysis presented in the Addendum EIR and Mitigation Monitoring Reporting Program (MMRP) for the Hamlet Plans 2017 Update General Plan Amendment 17-035; inclusive of Allensworth General Plan Amendment No. GPA 17-014; Change of Zone No. PZC 17-037 (Zoning District Map); Delft Colony General Plan Amendment No. GPA 17-015; Change of Zone No. PZC 17-015 (Zoning District Map); East Tulare Villa General Plan Amendment No. GPA 17-016; Change of Zone No. PZC 17-016 (Zoning District Map); Lindcove General Plan Amendment No. GPA 17-017; Change of Zone No. PZC 17-017 (Zoning District Map); Monson General Plan Amendment No. GPA 17-018; Change of Zone No. PZC 17-018 (Zoning District Map); Seville General Plan Amendment No. GPA 17-019; Change of Zone No. PZC 17-019 (Zoning District Map); Teviston General Plan Amendment No. GPA 17-020; Change of Zone No. PZC 17-020 (Zoning District Map); Tonyville General Plan Amendment No. GPA 17-021; Change of Zone No. PZC 17-021 (Zoning District Map); Waukena General Plan Amendment No. GPA 17-022; Change of Zone No. PZC 17-022 (Zoning

District Map); West Goshen General Plan Amendment No. GPA 17-023; Change of Zone No. PZC 17-023 (Zoning District Map); Yettem General Plan Amendment No. GPA 17-024; Change of Zone No. PZC 17-024 (Zoning District Map); Change of Zone No. PZC 17-038 (Mixed-Use Combining Zone–Section 18.9); Change of Zone No. PZC 17-039 (By-Right Uses–Section 16); and Amendments to General Plan Elements Part I Planning Framework, Environmental Resources Management (Open Space), Transportation & Circulation, and Part III (Hamlet Plans) has been completed in compliance with the California Environmental Quality Act and the State Guidelines for the Implementation of the California Environmental Quality Act of 1970; and,

2. The Commission further finds that The County prepared a Final EIR for the 2010 draft Tulare County General Plan 2030 Update (SCH #2006041162) and released the Final EIR for public review on or about August 30, 2011. The FEIR for the General Plan 2030 Update was prepared in compliance with the CEQA (Public Resources Code Section 21000 et seq. and the CEQA Guidelines (California Code of Regulations, Title 14). The Final EIR was distributed on CD to the State Clearinghouse, and all agencies who commented on the RDEIR. Individual notices of the FEIR availability were sent to agencies, organizations, and individuals who commented on the RDEIR. The Final EIR was available in all Tulare County Libraries, at the Tulare County Resource Management Agency and the following website, <http://generalplan.co.tulare.ca.us>; and,
3. The findings made in regards to this Addendum EIR and Mitigation Monitoring and Reporting Program for the Project are recommended by the Planning Commission as the Lead Agency; and,
4. Consistent with Public Resource Code Section 21081 and Guidelines Sections 15091 through 15093 (including Public Resources Code section 21061.1 and Guidelines Section 15364 relating to the definition of "feasibility"), the Commission hereby makes various findings relating to the less than significant effects identified in the Project Addendum. Based on substantial evidence in the IS/MND and Pursuant to the discussion in each section of the Addendum EIR, and the Public Record of Proceedings, the Commission finds and declares that mitigation measures are required and that the Project will not cause a significant impact to the environment with adoption of these mitigation measures.

AND, BE IT FURTHER RESOLVED as follows:

A. The Planning Commission finds that Tulare County is required to undertake Mitigation Measures set forth in attached Exhibit “B” that are restrictive and applied only to the Hamlet Plans 2017 Update. Therefore, the public will benefit from the Hamlet Plans as it will implement the General Plan and advance socially desirable community improvements that are environmentally and economically sound.

B. This Planning Commission hereby recommends that the Tulare County Board of Supervisors adopt the Addendum EIR and Mitigation Monitoring Reporting Program (SCH #2006041162).

The foregoing was adopted upon motion of Commissioner Aguilar, seconded by Commissioner Gong, at a regular meeting of the Planning Commission on November 8, 2017, by the following roll call vote:

AYES: Dias, Aguilar, Whitlatch, Millies, Gong, Pitigliano, Elliot
NOES: None
ABSTAIN: None
ABSENT: None

TULARE COUNTY PLANNING COMMISSION



Michael Washam, Secretary

Exhibits:

A – Addendum EIR

B – Mitigation Monitoring and Reporting Plan (MMRP)

BEFORE THE PLANNING COMMISSION

COUNTY OF TULARE, STATE OF CALIFORNIA

IN THE MATTER OF AMENDMENTS TO THE PART I)
PLANNING FRAMEWORK ELEMENT, ENVIRONMENTAL)
RESOURCES MANAGEMENT ELEMENT, LAND USE)
ELEMENT, TRANSPORTATION & CIRCULATION)
ELEMENT, PART III HAMLET PLANS, OF THE) RESOLUTION NO. 9367
TULARE COUNTY GENERAL PLAN FOR THE)
HAMLET PLANS 2017 UPDATE GPA 17-035)
INCLUSIVE OF GPA's GPA 17-014, GPA 17-015, GPA 17-016,)
GPA 17-017, GPA 17-018, GPA 17-019, GPA 17-020,)
GPA 17-021, GPA 17-022, GPA 17-023, GPA 17-024)

Resolution of the Tulare County Planning Commission recommending the adoption of the proposed amendments to Part I Framework Element; Land Use Elements, , Environmental Resources Management (Open Space) Transportation & Circulation and Part III Hamlet Plan of the Tulare County General Plan as set forth in Exhibits "A to K" for the Hamlet Plans 2017 Update General Plan Amendment No. GPA 17-035; inclusive of Allensworth General Plan Amendment No. GPA 17-014, Delft Colony General Plan Amendment No. GPA 17-015, East Tulare Villa General Plan Amendment No. GPA 17-016, Lindcove General Plan Amendment No. GPA 17-017, Monson General Plan Amendment No. GPA 17-018, Seville General Plan Amendment No. GPA 17-019, Teviston General Plan Amendment No. GPA 17-020, Tonyville General Plan Amendment No. GPA 17-021, Waukena General Plan Amendment No. GPA 17-022, West Goshen General Plan Amendment No. GPA 17-023, Yetttem General Plan Amendment No. GPA 17-024 by the Board of Supervisors.

WHEREAS, the Tulare County Board of Supervisors, on April 4, 2017, approved General Plan Initiation (GPI 17-001) which initiated the action to amend the Tulare County General Plan pursuant to Title 7, Chapter 3, Articles 5 and 6 of the Government Code of the State of California, and

WHEREAS, the Planning Commission has given notice of the proposed amendment to the General Plan as provided in Section 65854 of the Government Code of the State of California, and

WHEREAS, staff has made such investigation of fact bearing upon the proposed amendments to assure the action is consistent with the procedures and purposes set forth in the California Government Code, the State General Plan Guidelines, and other elements of the Tulare County General Plan, and

WHEREAS, staff has conducted multiple public outreach meetings in the Hamlet communities as part of the Hamlet Plans 2017 Update to receive public participation in shaping the Update, and

WHEREAS, on October 26, 2017 a notice of Public Hearing by the Tulare County Planning Commission was duly published in the Visalia Times-Delta, a newspaper of general circulation in Tulare County, to consider the Hamlet Plans 2017 Update, and

WHEREAS, a Public Hearing was held and an opportunity for public testimony was provided at a regular meeting of the Planning Commission on November 8, 2017 and

WHEREAS, at the Tulare County Planning Commission meeting, a public hearing was held and public testimony was presented by two Allensworth residents and a representative from Leadership Council who supported the project was received and recorded.

NOW, THEREFORE, BE IT RESOLVED as follows:

A. This Planning Commission hereby certifies that it has reviewed and considered the information contained in the Addendum EIR and Mitigation Monitoring and Reporting Program (MMRP) for compliance with the California Environmental Quality Act (CEQA), and the State Guidelines for the implementation of CEQA, prior to taking action on the proposed amendments to the Part I Planning Framework, Land Use, Environmental Resources Management (Open Space), Transportation & Circulation and Part III Hamlet Plans of the Tulare County General Plan for the Hamlet Plans 2017 Update.

B. This Planning Commission, after considering all of the evidence presented, including all comments received during the public review process, hereby determines the following findings to be relevant in evaluating the proposed General Plan Amendment:

1. The amendment of the Land Use Element to incorporate the land use designations contained in the Hamlet Plans 2017 Update is consistent with the Land Use Element of the Tulare County General Plan;
2. The amendment of the Transportation & Circulation Element to incorporate circulation plan designations contained in the Hamlet Plans 2017 Update is consistent with the Transportation & Circulation Element of the Tulare County General Plan;
3. The Amendment of the Planning Framework Element to adopt Hamlet Development Boundaries as set forth in the Tulare County General Plan, Planning Framework Element, adopted by the Tulare County Board of Supervisors in August 2012;
4. The Amendment to the Environmental Resources Management Element to modify the urban expansion area in the open space element reflective of the

adoption of Hamlet development boundaries consistent with the Planning Framework Element of the Tulare County General Plan;

5. The Amendment to Part I Planning Framework, Land Use, Environmental Resources Management (Open Space), Transportation and Circulation is necessary to maintain consistency and uniformity regarding the application of policies and procedures relative to Communities, Hamlets, and Legacy Communities.
6. Amendments to the Zoning Ordinance to implement the Hamlet Plans 2017 Update will reflect and remain consistent with the Land Use Plan for the Hamlet community;
7. The proposed amendments are internally consistent with the Tulare County General Plan. Specifically, Part I Planning Framework, Land Use, Environmental Resources Management, Transportation & Circulation and Public Facilities & Services Elements, and Part III Hamlet Plans of the Tulare County General Plan;
8. The Environmental Assessment Officer approved the Addendum EIR and Mitigation Monitoring and Reporting Program (MMRP) prepared for the project;
9. Based on substantial evidence, the analysis presented in the Addendum EIR and Mitigation Monitoring and Reporting Program (MMRP) for GPA 17-035 have been completed in compliance with the California Environmental Quality Act and the State Guidelines for the implementation of the California Environmental Quality Act of 1970.

AND, BE IT FURTHER RESOLVED as follows:

C. This Planning Commission hereby recommends that the Tulare County Board of Supervisors adopt the Addendum EIR and Mitigation Monitoring Reporting Program (SCH #2006041162).

D. This Planning Commission hereby recommends that the Tulare County Board of Supervisors adopt General Plan Amendment No. GPA 17-035 the Hamlet Plans 2017 Update set forth in attached Exhibits "A-K" which is incorporated by reference herein.

The foregoing was adopted upon motion of Commissioner Millies, seconded by Commissioner Pitigliano, at a regular meeting of the Planning Commission on November 8, 2017, by the following roll call vote:

AYES: Dias, Aguilar, Whitlatch, Millies, Gong, Pitigliano, Elliot
NOES: None
ABSTAIN: None
ABSENT: None

TULARE COUNTY PLANNING COMMISSION



Michael Washam, Secretary

Exhibits:

- Exhibit "A" – 2017 Allensworth Hamlet Plan (Part III)
- Exhibit "B" – 2017 Delft Colony Hamlet Plan (Part III)
- Exhibit "C" – 2017 East Tulare Villa Hamlet Plan (Part III)
- Exhibit "D" – 2017 Lindcove Hamlet Plan (Part III)
- Exhibit "E" – 2017 Monson Hamlet Plan (Part III)
- Exhibit "F" – 2017 Seville Hamlet Plan (Part III)
- Exhibit "G" – 2017 Teviston Hamlet Plan (Part III)
- Exhibit "H" – 2017 Tonyville Hamlet Plan (Part III)
- Exhibit "I" – 2017 Waukena Hamlet Plan (Part III)
- Exhibit "J" – 2017 West Goshen Hamlet Plan (Part III)
- Exhibit "K" – 2017 Yettem Hamlet Plan (Part III)

BEFORE THE PLANNING COMMISSION

COUNTY OF TULARE, STATE OF CALIFORNIA

IN THE MATTER OF AN AMENDMENT TO)
SECTION 18.9 "MU" MIXED USE COMBINING)
ZONE OF ORDINANCE NO. 352 CONSISTENT) RESOLUTION NO. 9368
WITH THE ADOPTED HAMLET PLANS 2017)
UPDATE, AS PROPOSED IN CHANGE OF ZONE)
NO. PZC 17-038)

Resolution of the Tulare County Planning Commission recommending that the Board of Supervisors amend Section 18.9 "MU" Combining Zone of Ordinance No. 352, the Zoning Ordinance set forth in attached Exhibit "A," to include the Hamlet Communities of Allensworth, Delft Colony, East Tulare Villa, Lindcove, Monson, Seville, Teviston, Tonyville, Waukena, West Goshen, and Yettem, consistent with the adopted Hamlet Plans 2017 Update.

WHEREAS, a petition has been filed pursuant to the regulations contained in Section 17 of the Tulare County Zoning Ordinance No. 352, and

WHEREAS, the Planning Commission has given notice of the Ordinance amendment as provided in Section 18 of Ordinance No. 352 and Section 65854 of the Government Code of the State of California, and

WHEREAS, staff has performed necessary investigations, prepared a written report made a part hereof, and recommended approval of this Ordinance amendment, and

WHEREAS, on October 26, 2017, a Notice of Public Hearing by the Tulare County Planning Commission was duly published in the Visalia Times-Delta, a newspaper of general circulation in Tulare County, and

WHEREAS, a public hearing was held and an opportunity for public testimony was provided at a regular meeting of the Planning Commission on November 8, 2017, and

WHEREAS, at the Tulare County Planning Commission meeting, a public hearing was held and public testimony was presented by two Allensworth residents and a representative from Leadership Council who supported the project was received and recorded, and

NOW, THEREFORE, BE IT RESOLVED as follows:

A. This Planning Commission hereby certifies that prior to taking action on the proposed amendment to Ordinance No. 352, it has reviewed and considered the information contained in the Addendum EIR and Mitigation Monitoring and Reporting Program (MMRP) for compliance with the California Environmental Quality Act (CEQA), and the State Guidelines for the implementation of CEQA that were prepared for the Hamlet Plans 2017 Update and is

applicable for the proposed amendment to Section 18.9 “MU” Mixed Use Combining Zone of Ordinance No. 352.

B. This Planning Commission, after considering all of the evidence presented, including all comments received during the public review process, hereby determines the following findings were relevant in evaluating the proposed Change of Zone:

1. The Tulare County Board of Supervisors, on April 4, 2017, approved General Plan Initiation (GPI 17-001) to prepare a General Plan Amendment for Unincorporated Community Plans, Hamlet Plans and Legacy Plans pursuant to Title 7, Chapter 3, Articles 5 and 6 of the Government Code of the State of California;
2. The purpose of this proposal is to obtain the appropriate zoning consistent with the adopted Hamlet Plans 2017 Update and to promote sustainability through mixed land uses while promoting economic development and prosperity in the Hamlet Communities of Allensworth, Delft Colony, East Tulare Villa, Lindcove, Monson, Seville, Teviston, Tonyville, Waukena, West Goshen, and Yettem;
3. The purpose of this Mixed Use Combining Zoning District is to provide design flexibility, streamline the approval process, promote economic development, and reduce vehicle miles traveled by locating residential uses within proximity of employment areas;
4. This Mixed Use Combining Zone update currently only applies to the communities of Traver, Strathmore, Pixley, Tipton, Terra Bella, Ducor, El Monte Mobile Village, Hypericum, Jovista, Matheny Tract and Tooleville, the Hamlet Communities of Allensworth, Delft Colony, East Tulare Villa, Lindcove, Monson, Seville, Teviston, Tonyville, Waukena, West Goshen, and Yettem will be added;
5. Within the Mixed Use Combining Zone, all uses outlined in the M-1 (Light Manufacturing), C-3 (Service Commercial), C-2 (General Commercial), C-1 (Neighborhood Commercial), R-1 (Single Family Residential), R-2 (Two-Family Residential), and R-3 (Multiple Family Residential) uses are allowed. Uses and activities that are found by the Planning Director to be similar to, and compatible with, those specific zoning districts are also allowed. Uses and activities determined to be compatible by the Planning Commission and the Board of Supervisors with the above mentioned zoning districts are also allowed;
6. All conditional uses allowed in the M-1, C-3, C-2, C-1, R-1, R-2, and R-3 zoning districts shall also be allowed by right with the exception of the following uses and combination of uses: Auto Wrecking and Residential, Battery Manufacture and Residential or Commercial, Biomass Fuel Production and Residential, Flammable

Liquids over 10,000 gallons, Hazardous Waste Facility, Planing Mills and Residential or Commercial, Sand blasting, Slaughterhouse and Residential, Solid Waste Recycling and Residential, Super service stations and Residential, Airport, and Heliport;

7. All uses shall be non-detrimental to the health, safety, peace, morals, comfort, and general welfare of persons residing or working in the community, or to the general welfare of the County. All uses shall limit impacts related to smoke, fumes, dust, gas, noise, odor, vibrations and other hazards. All allowed uses are subject to the determination of appropriateness by the Director of Planning; and
8. The Planning Director has the option of deferring any land use application allowed in this district to the Planning Commission for review and decision.

C. This Planning Commission, after considering all of the evidence presented, hereby finds the proposed Ordinance amendment to be consistent with the purpose of Ordinance No. 352 and further finds the petition is in conformance with the adopted General Plan for the County of Tulare.

AND, BE IT FURTHER RESOLVED as follows:

D. This Planning Commission hereby recommends that the Board of Supervisors find there is no substantial evidence that the amendment to Section 18.9 "MU" Mixed Use Combining Zone of Ordinance No. 352 will have a significant effect on the environment. And that the Addendum EIR and Mitigation Monitoring and Reporting Program (MMRP) that were prepared for the Hamlet Plans 2017 Update is applicable for the proposed amendment to Ordinance 352 and reflects the independent judgment of the County.

E. This Planning Commission hereby recommends that the Tulare County Board of Supervisors adopt the Addendum EIR and Mitigation Monitoring Reporting Program (SCH # State Clearinghouse No. 2006041162).

F. This Planning Commission hereby recommends that the Tulare County Board of Supervisors approve Change of Zone No. PZ 17-032, an amendment to Ordinance 352, Section 18.9 "MU" Mixed Use Combining Zone to include the Hamlet Communities of Allensworth, Delft Colony, East Tulare Villa, Lindcove, Monson, Seville, Teviston, Tonyville, Waukena, West Goshen, and Yettem, consistent with the adopted Hamlet Plans 2017 Update.

The foregoing was adopted upon motion of Commissioner Pitigliano, seconded by Commissioner Dias, at a regular meeting of the Planning Commission on November 8, 2017, by the following roll call vote:


AYES: Dias, Aguilar, Whitlatch, Millies, Gong, Pitigliano, Elliot

NOES: None

ABSTAIN: None

ABSENT: None

TULARE COUNTY PLANNING COMMISSION



Michael Washam, Secretary

Exhibits:

A – Section 18.9 Mixed-Use Combining Zone

BEFORE THE PLANNING COMMISSION

COUNTY OF TULARE, STATE OF CALIFORNIA

IN THE MATTER OF AN AMENDMENT)
TO SECTION 16.H OF ORDINANCE NO. 352)
TO ALLOW ADDITIONAL BY-RIGHT USES) RESOLUTION NO. 9369
CONSISTENT WITH THE ADOPTED HAMLET)
PLANS, AS PROPOSED IN CHANGE)
OF ZONE NO. PZC 17-039)

Resolution of the Tulare County Planning Commission recommending that the Board of Supervisors amend Section 16.H of Ordinance No. 352, the Zoning Ordinance, to allow additional by-right uses set forth in attached Exhibit "A," to include the Hamlet Communities of Allensworth, Delft Colony, East Tulare Villa, Lindcove, Monson, Seville, Teviston, Tonyville, Waukena, West Goshen, and Yettem, consistent with the adopted Hamlet Plans 2017 Update.

WHEREAS, a petition has been filed pursuant to the regulations contained in Section 17 of the Ordinance No. 352, and

WHEREAS, the Planning Commission has given notice of the Zoning Ordinance Amendment as provided in Section 18 of Ordinance No. 352 and Section 65854 and of the Government Code of the State of California, and

WHEREAS, staff has performed necessary investigations, prepared a written report, made a part hereof, and recommended approval of the Ordinance amendment, and

WHEREAS, on October 26, 2017, a Notice of Public Hearing by the Tulare County Planning Commission was duly published in the Visalia Times Delta, a newspaper of general circulation in Tulare County, and

WHEREAS, a public hearing was held and an opportunity for public testimony was provided at a regular meeting of the Planning Commission on November 8, 2017, and

WHEREAS, at the Tulare County Planning Commission meeting, a public hearing was held and public testimony was presented by two Allensworth residents and a representative from Leadership Council who supported the project was received and recorded, and

NOW, THEREFORE, BE IT RESOLVED as follows:

A. This Planning Commission hereby certifies that prior to taking action on the proposed amendment to Section 16.H of Ordinance No. 352, it has reviewed and considered the information contained in the Addendum EIR and Mitigation Monitoring and Reporting Program (MMRP) for compliance with the California Environmental Quality Act (CEQA), and the State Guidelines for the implementation of CEQA that were prepared for the Hamlet Plans 2017 Update and is applicable for the proposed Change of Zone.

B. This Planning Commission, after considering all of the evidence presented, including all comments received during the public review process, hereby determines the following findings were relevant in evaluating the proposed Change of Zone:

1. The Tulare County Board of Supervisors, on April 4, 2017, approved General Plan Initiation (GPI 17-001) to prepare a General Plan Amendment for Unincorporated Community Plans, Hamlet Plans and Hamlet Plans pursuant to Title 7, Chapter 3, Articles 5 and 6 of the Government Code of the State of California;
2. The purpose of this proposal is to obtain the appropriate zoning consistent with the adopted Hamlet Plans 2017 Update and to promote sustainability through the allowance of Additional By-Right Uses while promoting economic development and prosperity in the Hamlet Communities of Allensworth, Delft Colony, East Tulare Villa, Lindcove, Monson, Seville, Teviston, Tonyville, Waukena, West Goshen, and Yettem ;
3. The purpose of adding Additional By-Right Uses is to provide design flexibility, streamline the approval process, promote economic development, and reduce vehicles miles traveled by locating residential uses within proximity of employment areas; and
4. The allowance of Additional By-Right Uses currently only applies to the communities of Traver, Strathmore, Pixley, Tipton, Terra Bella and Ducor. The Hamlet Communities of Allensworth, Delft Colony, East Tulare Villa, Lindcove, Monson, Seville, Teviston, Tonyville, Waukena, West Goshen, and Yettem will be added.

C. This Planning Commission, after considering all of the evidence presented, hereby finds the proposed Ordinance amendment to be consistent with the purpose of Ordinance No. 352 and further finds the petition is in conformance with the adopted General Plan for the County of Tulare.

AND, BE IT FURTHER RESOLVED as follows:

D. This Planning Commission hereby recommends that the Board of Supervisors find there is no substantial evidence that the amendment to Section 16.H of Ordinance No. 352 to allow Additional By-Right Uses will have a significant effect on the environment. And that the Addendum EIR and Mitigation Monitoring and Reporting Program (MMRP) that were prepared for the Hamlet Plans 2017 Update are applicable for the proposed amendment to Ordinance 352 and reflects the independent judgment of the County.

E. This Planning Commission hereby recommends that the Tulare County Board of Supervisors adopt the Addendum EIR and Mitigation Monitoring Reporting Program (SCH # State Clearinghouse No. 2006041162).

F. This Planning Commission hereby recommends that the Tulare County Board of Supervisors approve Change of Zone No. PZC 17-032 an amendment to Ordinance No. 352, Section 16.H to allow Additional By-Right Uses to include the Hamlet Communities of Allensworth, Delft Colony, East Tulare Villa, Lindcove, Monson, Seville, Teviston, Tonyville, Waukena, West Goshen, and Yettem , consistent with the adopted Hamlet Plans 2017 Update, consistent with the Hamlet Communities 2017.

The foregoing was adopted upon motion of Commissioner Gong, seconded by Commissioner Dias, at a regular meeting of the Planning Commission on November 8, 2017, by the following roll call vote:

AYES: Dias, Aguilar, Whitlatch, Millies, Gong, Pitigliano, Elliot

NOES: None

ABSTAIN: None

ABSENT: None

TULARE COUNTY PLANNING COMMISSION


Michael Washam, Secretary

Exhibits:

A – Section 16.H Additional By-Right Uses

BEFORE THE PLANNING COMMISSION

COUNTY OF TULARE, STATE OF CALIFORNIA

IN THE MATTER OF AN AMENDMENT TO)
ORDINANCE NO. 352, ZONING ORDINANCE)
DISTRICT MAPS TO REZONE PROPERTIES)
IN THE HAMLET DEVELOPMENT BOUNDARIES)
OF ALLENSWORTH, DELFT COLONY,)
EAST TULARE VILLA, LINDCOVE, MONSON,)
SEVILLE, TEVISTON, TONYVILLE, WAUKENA,)
WEST GOSHEN, AND YETTEM) RESOLUTION NO. 9370
CONSISTENT WITH THE ADOPTED HAMLET)
PLANS 2017 UPDATE (GPA 17-035), AS)
PROPOSED IN CHANGE OF ZONE NO. PZC's)
PZC 17-037, PZC 17-015, PZC 17-016, PZC 17-017,)
PZC 17-018, PZC 17-019, PZC 17-020, PZC 17-021,)
PZC 17-022, PZC 17-023, AND PZC 17-024)

Resolution of the Tulare County Planning Commission recommending that the Board of Supervisors amend Ordinance No. 352, the Zoning Ordinance as set forth in attached Exhibit "B" Allensworth Rezoning Plan (PZC 17-037), to include the Hamlet Community of Allensworth, consistent with the adopted Allensworth Hamlet Plan 2017 Update, Exhibit "E" Delft Colony Rezoning Plan (PCZ 17-015), to include the Hamlet Community of Delft Colony, consistent with the adopted Delft Colony Hamlet Plan 2017 Update, Exhibit "H" East Tulare Villa Rezoning Plan (PCZ 17-016), to include the Hamlet Community of East Tulare Villa, consistent with the adopted East Tulare Villa Hamlet Plan 2017 Update, Exhibit "K" Lindcove Rezoning Plan (PCZ 17-017), to include the Hamlet Community of Lindcove, consistent with the adopted Lindcove Hamlet Plan 2017 Update, Exhibit "N" Monson Rezoning Plan (PCZ 17-018), to include the Hamlet Community of Monson, consistent with the adopted Monson Hamlet Plan 2017 Update, Exhibit "Q" Seville Rezoning Plan (PZC 17-019), to include the Hamlet Community of Seville, consistent with the adopted Seville Hamlet Plan 2017 Update, Exhibit "T" Teviston Rezoning Plan (PCZ 17-020), to include the Hamlet Community of Teviston, consistent with the adopted Teviston Hamlet Plan 2017 Update, Exhibit "W" Tonyville Rezoning Plan (PCZ 17-021), to include the Hamlet Community of Tonyville, consistent with the adopted Tonyville Hamlet Plan 2017 Update, Exhibit "Z" Waukena Rezoning Plan (PCZ 17-022), to include the Hamlet Community of Waukena, consistent with the adopted Waukena Hamlet Plan 2017 Update, Exhibit "CC" West Goshen Rezoning Plan (PCZ 17-023), to include the Hamlet Community of West Goshen, consistent with the adopted West Goshen Hamlet Plan 2017 Update, Exhibit "FF" Yettem Tract Rezoning Plan (PCZ 17-024), to include the Hamlet Community of Yettem, consistent with the adopted Yettem Hamlet Plan 2017 Update, and

WHEREAS, a petition has been filed pursuant to the regulations contained in Section 17 of the Tulare County Zoning Ordinance No. 352, and

WHEREAS, the Planning Commission has given notice of the Ordinance amendment as provided in Section 18 of Ordinance No. 352 and Section 65854 of the Government Code of the State of California, and

WHEREAS, staff has performed necessary investigations, prepared a written report made a part hereof, and recommended approval of this Ordinance amendment, and

WHEREAS, on October 26, 2017, a Notice of Public Hearing by the Tulare County Planning Commission was duly published in the Visalia Times-Delta, a newspaper of general circulation in Tulare County, and

WHEREAS, a public hearing was held and an opportunity for public testimony was provided at a regular meeting of the Planning Commission on November 8, 2017, and

WHEREAS, at the Tulare County Planning Commission meeting, a public hearing was held and public testimony was presented by two Allensworth residents and a representative from Leadership Council who supported the project was received and recorded, and

NOW, THEREFORE, BE IT RESOLVED as follows:

A. This Planning Commission hereby certifies that prior to taking action on the proposed Change of Zone, it reviewed and considered the information contained in the Addendum EIR and Mitigation Monitoring and Reporting Program (MMRP) for compliance with the with the California Environmental Quality Act (CEQA), and the State Guidelines for the implementation of CEQA that were prepared for the Hamlet Plans 2017 Update and is applicable for the proposed amendment to Ordinance No. 352.

B. This Planning Commission, after considering all of the evidence presented, including all comments received during the public review process, hereby determines the following findings were relevant in evaluating the proposed Change of Zone:

1. The Tulare County Board of Supervisors, on April 4, 2017, approved General Plan Initiation (GPI 17-001) to prepare a General Plan Amendment for Unincorporated Community Plans, Hamlet Plans and Legacy Plans pursuant to Title 7, Chapter 3, Articles 5 and 6 of the Government Code of the State of California;
2. The purpose of this proposal is to obtain the appropriate zoning consistent with the adopted Hamlet Plans 2017 Update (GPA 17-035) and to promote sustainability through mixed land uses while promoting economic development and prosperity in the Allensworth, Delft Colony, East Tulare Villa, Lindcove, Monson, Seville, Teviston, Tonyville, Waukena, West Goshen, and Yette Hamlet Communities;

3. The proposed changes in zone district designations identified in the Allensworth, Delft Colony, East Tulare Villa, Lindcove, Monson, Seville, Teviston, Tonyville, Waukena, West Goshen, and Yettem Rezoning Plans are consistent with Tulare County General Plan policy.

C. This Planning Commission, after considering all of the evidence presented, hereby finds the proposed Ordinance amendment to be consistent with the purpose of Ordinance No. 352 and further finds the petition is in conformance with the adopted General Plan for the County of Tulare.

AND, BE IT FURTHER RESOLVED as follows:

D. This Planning Commission hereby recommends that the Board of Supervisors find there is no substantial evidence that the Allensworth, Delft Colony, East Tulare Villa, Lindcove, Monson, Seville, Teviston, Tonyville, Waukena, West Goshen, and Yettem Rezoning Plans will have a significant effect on the environment. And that the Addendum EIR and Mitigation Monitoring and Reporting Program (MMRP) that were prepared for the Allensworth, Delft Colony, East Tulare Villa, Lindcove, Monson, Seville, Teviston, Tonyville, Waukena, West Goshen, and Yettem Hamlet Plans 2017 Update are applicable for the proposed amendment to Ordinance No. 352 and reflects the independent judgment of the County.

E. This Planning Commission hereby recommends that the Tulare County Board of Supervisors adopt the Addendum EIR and Mitigation Monitoring Reporting Program (SCH # No. 2006041162).

F. This Planning Commission hereby recommends that the Tulare County Board of Supervisors approve the Allensworth Change of Zone No. PZC 17-037, Delft Colony Change of Zone No. PZC 17-015, East Tulare Villa Change of Zone No. PZC 17-016, Lindcove Change of Zone No. PZC 17-017, Monson Change of Zone No. PZC 17-018, Seville Change of Zone No. PZC 17-019, Teviston Change of Zone No. PZC 17-020, Tonyville Change of Zone No. PZC 17-021, Waukena Change of Zone No. PZC 17-022, West Goshen Change of Zone No. PZC 17-023, Yettem Change of Zone No. PZC 17-024 an amendment to Ordinance No. 352, the Zoning Ordinance set forth in attached Exhibits "B" "E" "H" "K" "N" "Q" "T" "W" "Z" "CC" "FF" Rezoning Plans consistent with the adopted Allensworth, Delft Colony, East Tulare Villa, Lindcove, Monson, Seville, Teviston, Tonyville, Waukena, West Goshen, and Yettem Hamlet Plans 2017 Update (GPA 17-035).

The foregoing was adopted upon motion of Commissioner Aguilar, seconded by Commissioner Pitigliano, at a regular meeting of the Planning Commission on November 8, 2017, by the following roll call vote:

AYES: Dias, Aguilar, Whitlatch, Millies, Gong, Pitigliano, Elliot
NOES: None
ABSTAIN: None
ABSENT: None

TULARE COUNTY PLANNING COMMISSION


Michael Washam, Secretary

Exhibits:

Attachment 1

Allensworth Change of Zone No. PZC 17-037

Exhibit "A" – Zoning District Ordinance Map

Exhibit "B" – Zoning Map

Exhibit "C" – List of Affected Properties/Map

Delft Colony Change of Zone No. PZC 17-015

Exhibit "D" – Zoning District Ordinance Map

Exhibit "E" – Zoning Map

Exhibit "F" – List of Affected Properties/Map

East Tulare Villa Change of Zone No. PZC 17-016

Exhibit "G" – Zoning District Ordinance Map

Exhibit "H" – Zoning Map

Exhibit "I" – List of Affected Properties/Map

Lindcove Change of Zone No. PZC 17-017

Exhibit "J" – Zoning District Ordinance Map

Exhibit "K" – Zoning Map

Exhibit "L" – List of Affected Properties/Map

Monson Change of Zone No. PZC 17-018

Exhibit "M" – Zoning District Ordinance Map

Exhibit "N" – Zoning Map

Exhibit "O" – List of Affected Properties/Map

Seville Change of Zone No. PZC 17-019

Exhibit "P" – Zoning District Ordinance Map

Exhibit "Q" – Zoning Map

Exhibit "R" – List of Affected Properties/Map

Teviston Change of Zone No. PZC 17-020

Exhibit "S" – Zoning District Ordinance Map

Exhibit "T" – Zoning Map

Exhibit "U" – List of Affected Properties/Map

Tonyville Change of Zone No. PZC 17-021

Exhibit "V" – Zoning District Ordinance Map

Exhibit "W" – Zoning Map

Exhibit "X" – List of Affected Properties/Map

Waukena Change of Zone No. PZC 17-022

Exhibit "Y" – Zoning District Ordinance Map

Exhibit "Z" – Zoning Map

Exhibit "AA" – List of Affected Properties/Map

West Goshen Change of Zone No. PZC 17-023

Exhibit "BB" – Zoning District Ordinance Map

Exhibit "CC" – Zoning Map

Exhibit "DD" – List of Affected Properties/Map

Yettem Change of Zone No. PZC 17-024

Exhibit "EE" – Zoning District Ordinance Map

Exhibit "FF" – Zoning Map

Exhibit "GG" – List of Affected Properties/Map

Attachment 2

Hamlet Plan Rezoning Full Ordinance

Exhibit A - *Hamlet Plan Rezoning Full Ordinance*

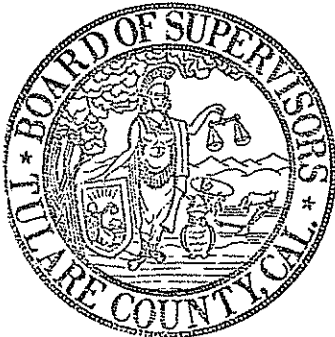
Appendix B – Board of Supervisors Resolution No. 2017-0976

BEFORE THE BOARD OF SUPERVISORS COUNTY OF TULARE, STATE OF CALIFORNIA

IN THE MATTER OF HAMLET AND COMMUNITY PLANS 2017 UPDATE (GENERAL PLAN AMENDMENT 17-035) AND AMENDMENTS TO THE TULARE ZONING ORDINANCE NO. 352)))))	Resolution No. <u>2017-0976</u> Ordinance No. <u>3515, 3516, 3517,</u> <u>3518, 3519, and 3520</u>
---	-----------------------	--

UPON MOTION OF SUPERVISOR WORTHLEY, SECONDED BY SUPERVISOR ENNIS, THE FOLLOWING WAS ADOPTED BY THE BOARD OF SUPERVISORS, AT AN OFFICIAL MEETING HELD DECEMBER 5, 2017, BY THE FOLLOWING VOTE:

AYES: SUPERVISORS CROCKER, VANDER POEL, SHUKLIAN, WORTHLEY,
 AND ENNIS
 NOES: NONE
 ABSTAIN: NONE
 ABSENT: NONE



ATTEST: MICHAEL C. SPATA
 COUNTY ADMINISTRATIVE OFFICER/
 CLERK, BOARD OF SUPERVISORS

BY: *Debra Ravello*
 Deputy Clerk

* * * * *

That the Board of Supervisors:

1. Held Public Hearing at 9:30 A.M. or shortly thereafter; and
2. Certified that the Board of Supervisors has reviewed and considered the information contained in the Addendum to the (2012) Tulare County 2030 General Plan Final Environmental Impact Report for the Hamlet and Community Plans 2017 Update is applicable to the General Plan Amendment and associated Zoning Ordinance Amendments for the Hamlet and Community Plans 2017 Update as being in compliance with the California Environmental Quality Act (CEQA) and the State CEQA Guidelines, including CEQA findings, and the Mitigation Monitoring Reporting Program for the Hamlet and Community Plans 2017 Update (GPA 17-035); and

3. Adopted one General Plan Amendment No. GPA 17-035, for the Hamlet and Community Plans 2017 Update inclusive of the Allensworth Hamlet Plan (GPA 17-014), Delft Colony Hamlet Plan (GPA 17-015), East Tulare Villa Hamlet Plan (GPA 17-016), Lindcove Hamlet Plan (GPA 17-017), Monson Hamlet Plan (GPA 17-018), Seville Hamlet Plan (GPA 17-019), Teviston Hamlet Plan (GPA 17-020), Tonyville Hamlet Plan (GPA 17-021), Waukena Hamlet Plan (GPA 17-022), West Goshen Hamlet Plan (GPA 17-023), Yettem Hamlet Plan (GPA 17-024), Alpaugh Community Plan (GPA 17-004), East Orosi Community Plan (GPA 17-034), London Community Plan (GPA 17-008), Richgrove Community Plan (GPA 17-011), Sultana Community Plan (GPA 17-012), and Amendments to Part III of the Tulare County General Plan to adopt Hamlet and Community Plans, and to Part I General Plan Amendment to the Planning Framework, Land Use, Environmental Resources Management (Open Space), Transportation and Circulation Elements, consistent with the Hamlet Plans 2017 Update; and
4. Waived the final reading and adopt Amendments to Section 18.9 and Section 16 of Tulare County Ordinance 352, the Zoning Ordinance, and Map Amendments to rezone properties consistent with the Hamlet and Community Plans as follows:
 - A. Zone Ordinance Amendment (PZC 17-038) to Section 18.9 to adopt a Mixed-Use Combining Zone within the Allensworth, Delft Colony, East Tulare Villa, Lindcove, Monson, Seville, Teviston, Tonyville, Waukena, West Goshen, and Yettem Hamlet Development Boundaries.
 - B. Zone Ordinance Amendment (PZC 17-039) to Section 16 to allow additional by-right uses within the Allensworth, Delft Colony, East Tulare Villa, Lindcove, Monson, Seville, Teviston, Tonyville, Waukena, West Goshen, and Yettem Hamlet Development Boundaries.
 - C. Zone Ordinance Amendments as set forth in the Zoning District Ordinance Maps for Allensworth (PZC 17-037), Delft Colony (PZC 17-015), East Tulare Villa (PZC 17-016) Lindcove (PZC 17-017), Monson (PZC 17-018), Seville (PZC 17-019), Teviston (PZC 17-020), Tonyville (PZC 17-021), Waukena (PZC 17-022), West Goshen (PZC 17-023), Yettem (PZC 17-024), consistent with the Hamlet Plans 2017 Update.
 - D. Zone Ordinance Amendment (PZC 17-041) to Section 18.9 to adopt a Mixed-Use Combining Zone within the Alpaugh, East Orosi, London, Richgrove, and Sultana Urban Development Boundaries.
 - E. Zone Ordinance Amendment (PZC 17-042) to Section 16 to allow additional by-right uses within the Alpaugh, East Orosi, London, Richgrove, and Sultana Urban Development Boundaries.
 - F. Zone Ordinance Amendments as set forth in the Zoning District Ordinance Maps for Alpaugh (PZC 17-004), East Orosi (No. PZC 17-005), London (PZC 17-008), Richgrove (PZC 17-011), Sultana (PZC 17-012), consistent with the Community Plans 2017 Update; and
5. Adopted the findings of approval set forth for Hamlets in Planning Commission Resolution No. 9366 (Addendum to EIR), Planning Commission Resolution No.

9367 (Hamlet Plans 2017 Update), Planning Commission Resolution No. 9368 (Section 18.9 Mixed Use), Planning Commission Resolution No. 9369 (Section 16 By-Right Uses), and Planning Commission Resolution No. 9370 (Zoning District Ordinance Maps), and Communities in Planning Commission Resolution No. 9371 (Addendum to EIR), Planning Commission Resolution No. 9372 (Community Plans 2017 Update), Planning Commission Resolution No. 9373 (Section 18.9 Mixed Use), Planning Commission Resolution No. 9374 (Section 16 By-Right Uses), and Planning Commission Resolution No. 9375 (Zoning District Ordinance Maps); and

6. Authorized the Chairman to sign any and all necessary zoning changes under Ordinance 352, and specifically changes to Sections 18.9 and Section 16 to add Allensworth, Delft Colony, East Tulare Villa, Lindcove, Monson, Seville, Teviston, Tonyville, Waukena, West Goshen, Yettem, Alpaugh, East Orosi, London, Richgrove, and Sultana to include the Mixed Use Combining Zone and additional by-right uses; and
7. Directed the Clerk of the Board to publish once in the Visalia Times-Delta newspaper the summary of the ordinance amendments and amended zoning map with the names of the Board of Supervisors voting for and against the amendment and to post a certified copy of the full ordinance amending the Tulare County Zoning Ordinance with the names of the Board of Supervisors voting for and against the amendment, within fifteen (15) days as required by Section 25124 et. Seq; and
8. Directed the Environmental Assessment Officer, or designee, of the Tulare Resource Management Agency to file a Notice of Determination with the Tulare County Clerk; and
9. Authorized the Director of the Resource Management Agency, or designee, to make appropriate technical revisions to the General Plan Amendment, Hamlet and Community Plans, and associated project documents; and
10. Adopted the findings of approval set forth in Planning Commission Resolution 9376 and approved the Strategic Growth Council Final Report; and
11. Approved more detailed findings contained in Exhibit "A" incorporated by reference herein.

RMA

HAR
12/05/2017